

LEGEND

RECENT AND PLEISTOCENE

Recent alluvium and glacial drift

INTRUSIVES

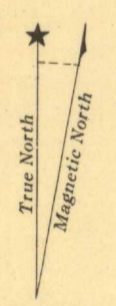
- 12 Granite and granite-gneiss with inclusions of schist
- Granite porphyry (outcrops shown in solid black)
- 10 Granodiorite and granite
- 9 Gabbro and diorite

RICE LAKE SERIES

- 8 Trachyte, diabase, chlorite schist, actinolite schist, chlorite-carbonate schist, iron formation
- 7 Quartzite, greywacke, chert
- 6 Andesite, chlorite schist, chert, tuff, agglomerate
- 4, 5 Basalt, chlorite schist, thin beds of rhyolite, tuff, chert and iron formation (4); basalt, diabase, chlorite-carbonate schist, trachyte, pyroclastics (5)
- 3 Rhyolite porphyry, dacite porphyry, basalt, sericite schist, chlorite schist
- 2 Greywacke, pyroclastics, rhyolite, basalt, sericite schist
- 1 Quartzite, slate, sericite schist

BERSEFORD LAKE PHASE  
 MANICOTAGAN PHASE

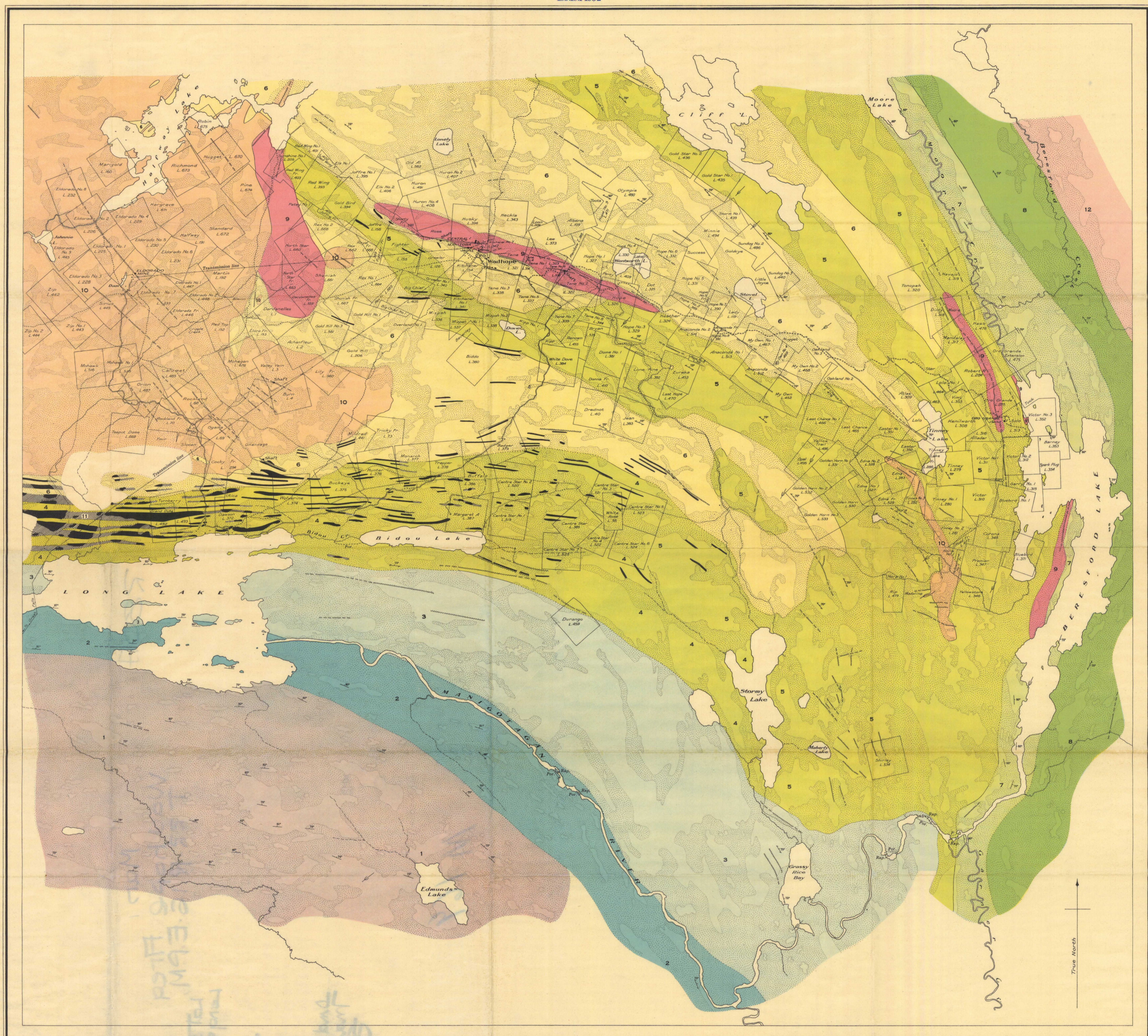
- Shear zones, quartz bodies
- Geological boundary (defined)
- Geological boundary (assumed)
- Bedding (inclined)
- Schistosity (inclined)
- Glacial striae
- Road
- Trail



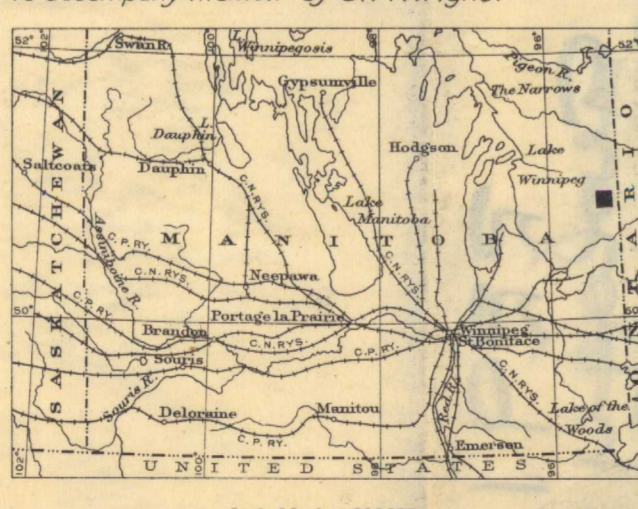
Approximate magnetic declination, 10° East.

SOURCES OF INFORMATION

Geology by J. F. Wright, 1929.  
 Topography from control surveys by R. C. McDonald, 1928; and from aerial photographs by the Department of National Defence.  
 Claims surveys by Department of the Interior.



To accompany Memoir by J. F. Wright.



Scale, 1 inch to 100 Miles

MAP 280A  
**WADHOPE AREA**  
 TOWNSHIP 22, RANGE 16,  
 EAST OF PRINCIPAL MERIDIAN  
 MANITOBA

Scale, 1 inch to 2000 Feet

NOT TO BE TAKEN FROM LIBRARY  
 NE PAS SORTIR DE LA BIBLIOTHÈQUE

RELATED PUBLICATIONS  
 SUMMARY REPORT, 1912: Region East of the South End of Lake Winnipeg; by E. S. Moore.  
 SUMMARY REPORT, 1923, PART B: Geology and Mineral Prospects of the Northern part of Berseford Lake map-area, Southeast Manitoba; by J. F. Wright.  
 MAP 195A: Berseford and Rice Lakes Area, East of Principal Meridian, Manitoba, 1927; scale, 1 in to 1 mile.  
 SUMMARY REPORT, 1929, PART B: Gold, Copper-nickel, and Tin Deposits of Southeast Manitoba; by J. F. Wright.  
 INDUSTRIAL DEVELOPMENT BOARD OF MANITOBA, 1927: The Mineral Resources of Southeastern Manitoba; by J. S. DeLury.