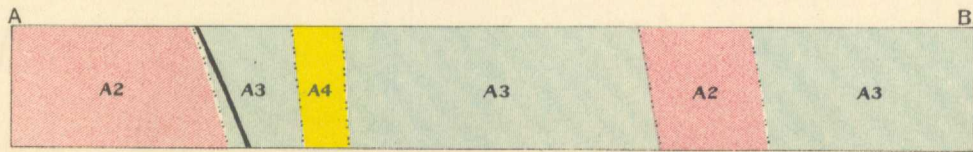


Canada
Department of Mines

HON. MARTIN BURRELL, MINISTER; R.G.M. CONNELL, DEPUTY MINISTER.

GEOLOGICAL SURVEY
WILLIAM McINNES, DIRECTING GEOLOGIST.

Issued 1919



Diagrammatic section along line A B

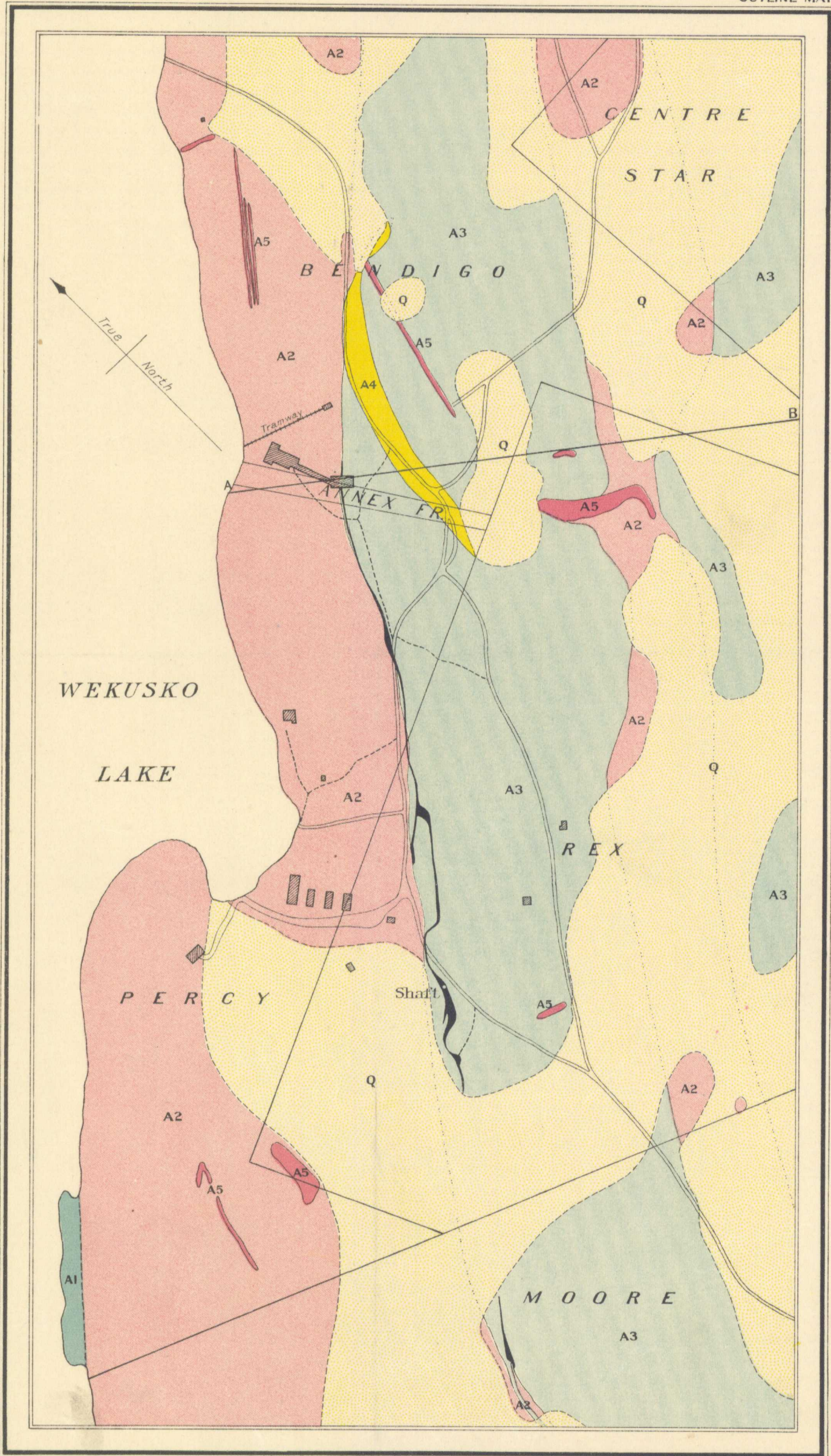
OUTLINE MAP

QUATERNARY

PRE-CAMBRIAN

LEGEND

- Q
Drift and clay
 -
 - A5
Hornblende lamprophyre
 - A4
Mica lamprophyre
 - A3
Rhyolite
 - A2
Arkose
 - A1
Slate
- Symbols
- -
 -
 -
 -

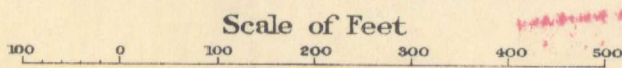


C.O. Senécal, Geographer and Chief Draughtsman
J.O. Fortin, Draughtsman

Publication N° 1763

PORTRION OF THE REX GROUP OF CLAIMS,
WEKUSKO LAKE, MANITOBA.

NOT TO BE TAKEN FROM LIBRARY
NE PAS SORTIR DE LA BIBLIOTHÈQUE



Wekusko Lake

To accompany memoir by F.J. Alcock

5.1.3
A, Geol.

1763