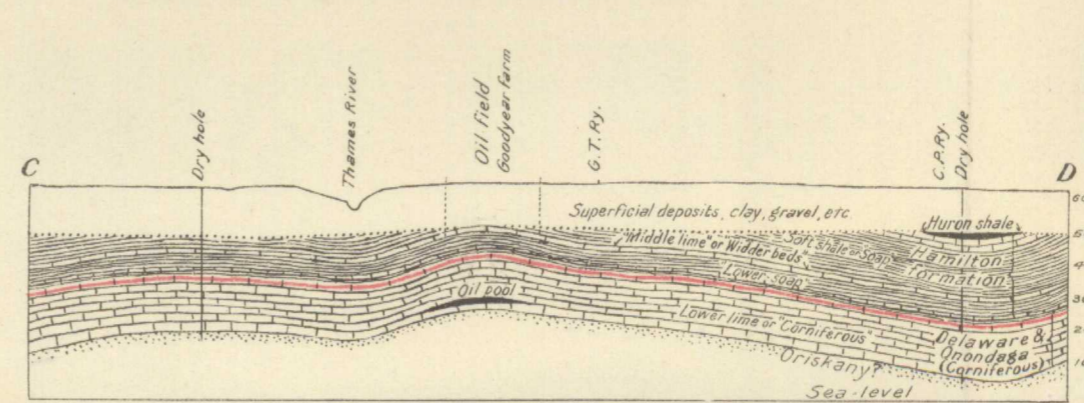
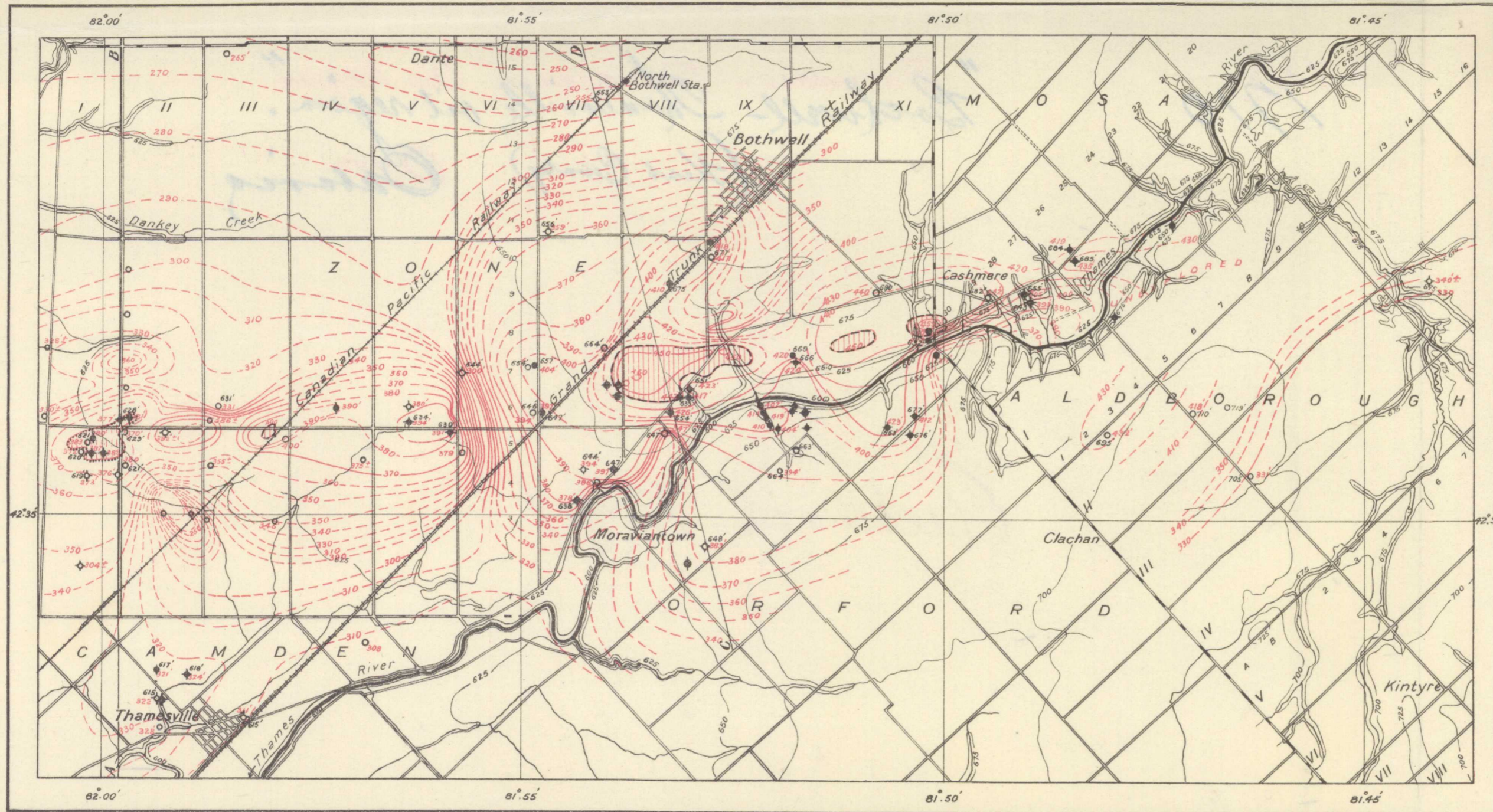


Cross-section on line AB.



Cross-section on line CD.



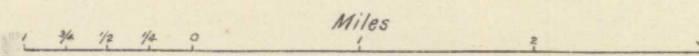
- Legend**
- Limestone.
  - Shale. (including 'Soap' of drillers)
  - Sandstone.
  - Surface contour.
  - Structure contour of top of Delaware limestone. (Corniferous, "Big or Lower limestone")
  - Oil well.
  - Oil well. (a little oil)
  - Oil well. (producing)
  - Oil well. (abandoned)
  - Borehole. (no gas nor oil)
  - Oil field. (many wells)
  - Oil field. (abandoned. (many wells)
- Figures in black show heights in feet above sea level.  
 Figures in red show heights of top of Delaware limestone.

Geological Survey, Canada.

**Bothwell-Thamesville Oil Region, Kent County, Ontario.**

Publication No. 1710.

To accompany Summary Report by M.Y. Williams, 1917



Geology by M.Y. Williams, 1917.

NOT TO BE TAKEN FROM LIBRARY  
 NE PAS SORTIR DE LA BIBLIOTHÈQUE

1710

This map has been produced from a scanned version of the original map  
 Reproduction par numérisation d'une carte sur papier