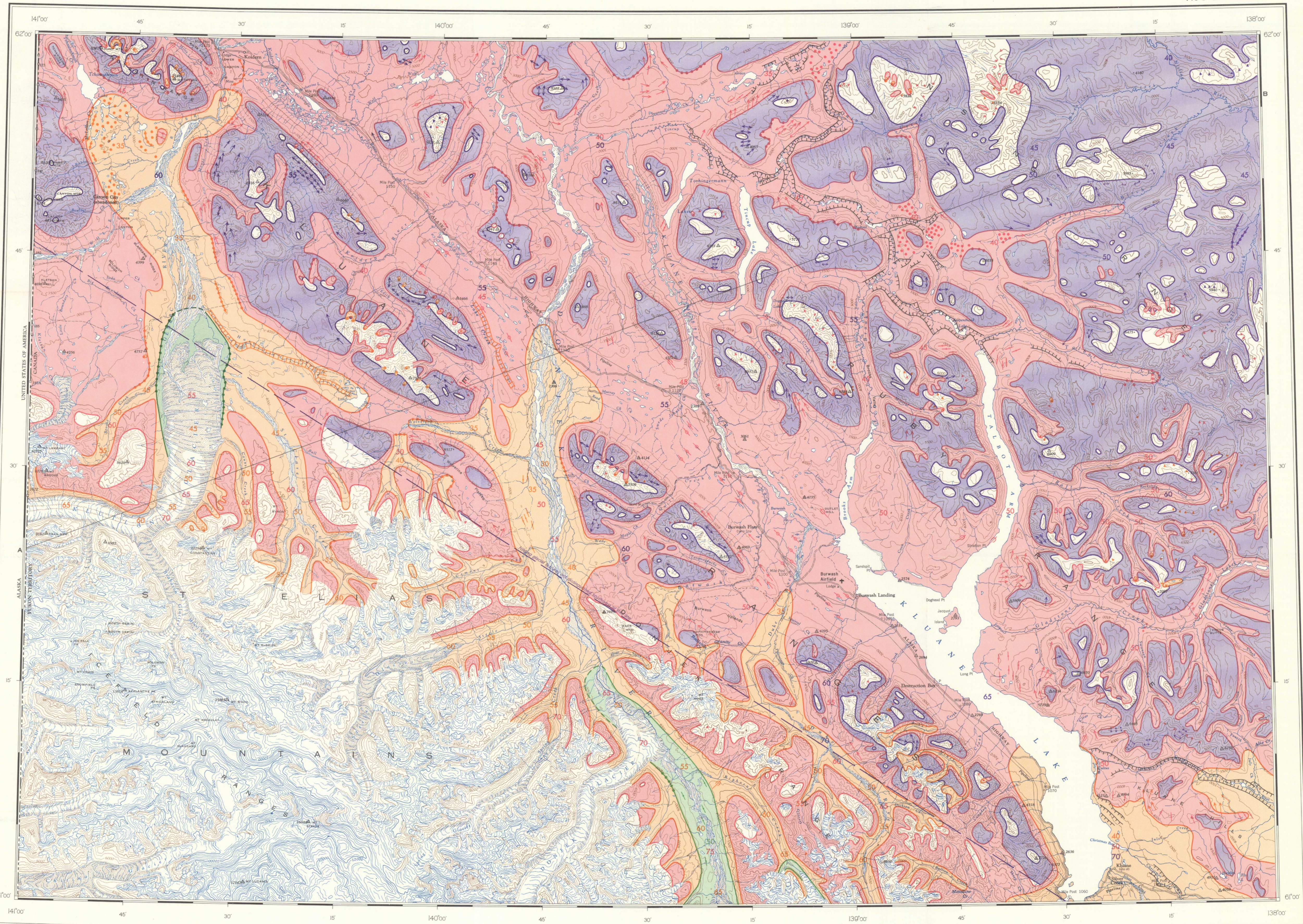


Projected Pleistocene ice-levels in relation to present topography along line A-B  
Vertical scale: 1 inch to 4215 feet Horizontal scale: 1 inch to 4 miles

115G and 115F E



LEGEND

(All glacial boundaries are approximate)

- Sub-recent advances (Kluane glaciers only)
  - St. Elias glacial advance
  - Ruby Ice Sheet
  - Nising Ice Sheet
- Glacial limit
- Glacier area (showing extent of each advance beyond limit of subsequent advances)
- Cirque, cirque with glacial limit
- Approximate elevation of glacial limit in hundreds of feet
- End moraines, strong morainal topography
- Drumming
- Rock-drummings and major rock-strips, visible on air photos
- Glacial striae (observed)
- Notches, marginal channels
- Large run-off channel
- Present glaciers
- Scarp in unconsolidated deposit

Information obtained by J. E. Muller

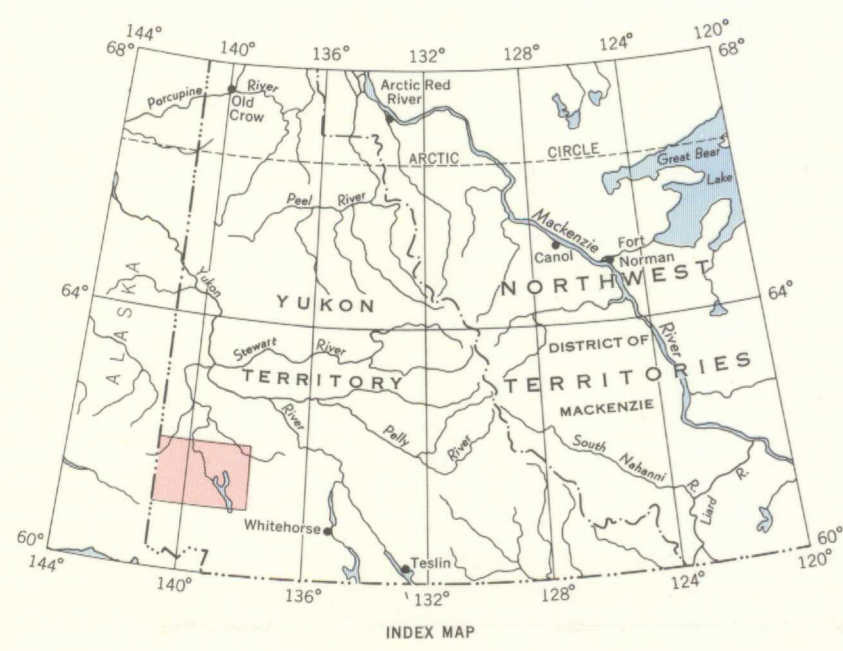
To accompany GSC Memoir 340 by J. E. Muller

Geological cartography by the Geological Survey of Canada, 1965

Mean magnetic declination: 29°42' E decreasing 3.5' annually. Readings vary from 28°50' E in the SW corner to 30°42' E in the NE corner of the map-area

- Road, all weather
- Road, dry weather
- Cart track
- Trail or portage
- International boundary
- Boundary monument
- Horizontal control point
- Post Office
- Glacier
- Intermittent stream
- Marsh
- Dry river bed
- Sand or mud
- Debris-covered ice
- Contours (interval 500 feet)
- Height in feet above mean sea-level

Base-map compiled and drawn by the Surveys and Mapping Branch, 1961

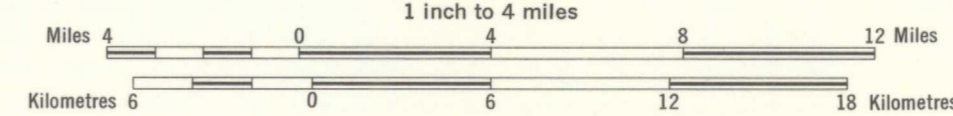


PUBLISHED, 1966  
COPIES OF THIS MAP MAY BE OBTAINED FROM THE DIRECTOR, GEOLOGICAL SURVEY OF CANADA, OTTAWA

PRINTED BY THE SURVEYS AND MAPPING BRANCH

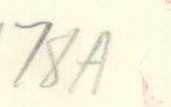
MAP 1178A  
GLACIATION  
KLUANE LAKE  
YUKON TERRITORY

Scale 1:253,440  
1 inch to 4 miles



NOT TO BE TAKEN FROM LIBRARY  
NE PAS SORTIR DE LA BIBLIOTHÈQUE

1178A



1178A