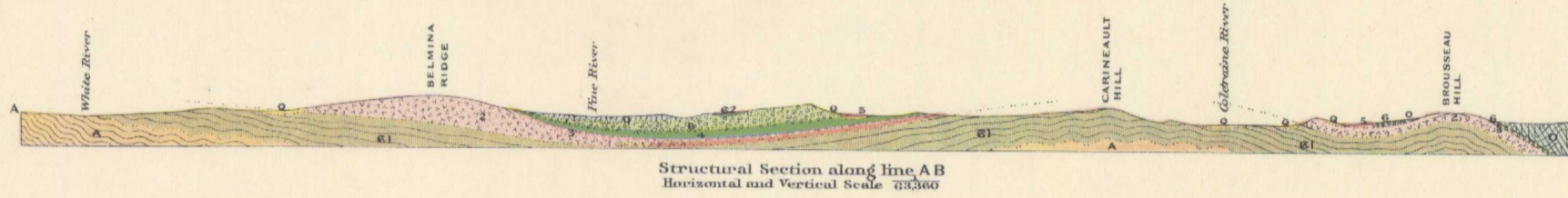


Canada  
Department of Mines

HON. E. L. PATENAUDE, MINISTER; R. G. McCONNELL, DEPUTY MINISTER.

GEOLOGICAL SURVEY

Issued 1917



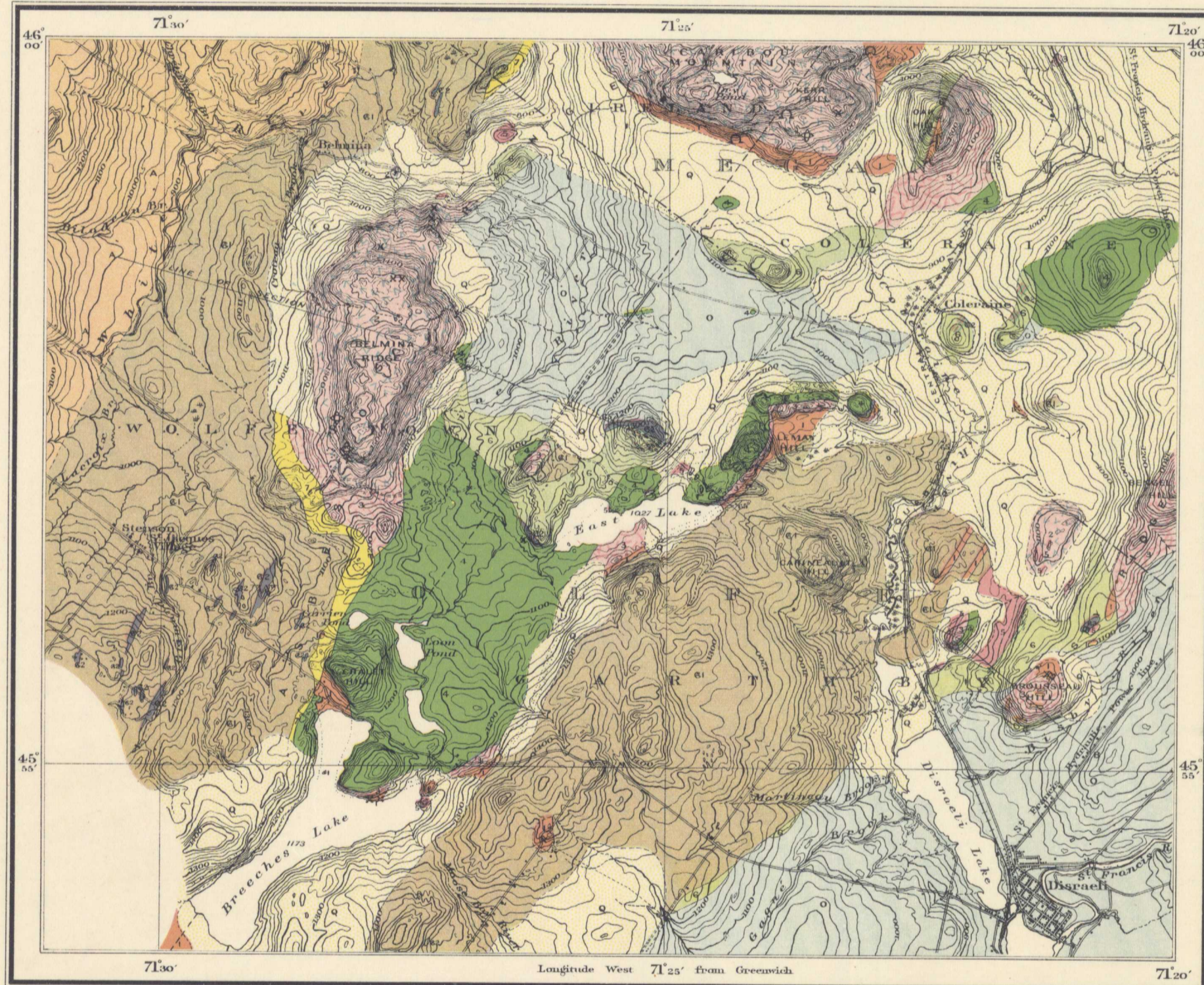
QUATERNARY  
RECENT AND  
PLEISTOCENE  
  
POST-ORDOVICIAN  
  
PALAEOZOIC  
ORDOVICIAN (?)  
CAMBRIAN (?)  
PRE-CAMBRIAN

LEGEND

Q	Alluvium and glacial deposits	<p><b>Symbols</b></p> <p>∩ Clusomite</p> <p>⊕ Asbestos</p> <p>× Prospects</p> <p>— Geological boundary (defined)</p> <p>- - - Geological boundary (approximate)</p> <p>- - - Geological boundary (assumed)</p> <p>05° Dip and strike</p>
8	Dikes	
7	Metamorphic hornblende schist	
6	Brecciated, amygdaloidal, ellipsoidal contact phase of the serpentine series	
5	Granite	
4	Gabbro, diorite	
3	Pyroxenite (largely unaltered)	
2	Serpentinised pyroxenite (for the most part, with small masses of serpentinised peridotite)	
1	Serpentinised dunite and peridotite	
0	Farnham(?) black pebbly slate, chert	
ε <sub>2</sub>	Sillery(?) red and purple slates, sandstone lenses	
ε <sub>1</sub>	L'Islet(?) quartzite	
A	Bennett quartzite schist	

LEGEND

	i Schools
	i Post offices
	- - - County boundaries
	- - - Township boundaries
i Churches	1000' 1500' Figures (showing heights in feet above sea-level)



C. O. Sénécal, Geographer and Chief Draughtsman.  
A. Jones, Draughtsman.

Catalogue No 1677

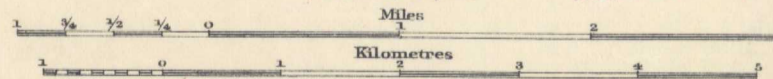


COLERAINE  
MEGANTIC AND WOLFE COUNTIES  
QUEBEC

**GEOLOGY**  
R. MARVIE, (IN CHARGE) 1915, 1916  
J. K. KNOX, 1915, 1916

**TOPOGRAPHY**  
D. A. NICHOLS, 1913, 1914  
S. C. McLEAN, (TRIANGULATION) 1913

Scale, 1:3360



1 MILE TO 1 INCH

To accompany Summary Report by R. Marvie, 1916.

Coleraine

5.1.97 5014

A. Geol.

1677