

LEGEND

- QUATERNARY**
- 13 Alluvium, glacial deposits, volcanic ash, loess
  - 12 MILES CANYON BASALT: basalt, minor pyroclastic rocks
- TERTIARY OR EARLIER**
- 11 Granite porphyry, rhyolite
  - 10 SKUKUM GROUP  
Andesite, basalt, rhyolite, and trachyte breccias, tuffs, and flows, granitic agglomerate; minor greywacke
  - 9 Pink quartz monzonite
- CRETACEOUS**
- COAST INTRUSIONS**
- 8 Granodiorite, granite, quartz monzonite, quartz diorite, and allied rocks; Ba, hornblende-biotite-oligoclase granodiorite; Bb, leucocratic granite, biotite granite; Bc, biotite-hornblende quartz diorite; Bd, hornblende diorite; Be, gneissic porphyritic granodiorite; Bf, shattered granodiorite and granitic breccia; Bg, pegmatic syenite
- HUTSHI GROUP**
- 7 Basalt, andesite, quartz latite, and rhyolite flows, breccias, and tuffs, conglomerate; minor greywacke and argillite; 7a, basalt dyke; 7b, altered volcanic rocks probably belonging to Hutshi group
- MESOZOIC**
- 6 Peridotite, dunite, serpentinite, pyroxenite
- JURASSIC (?) AND CRETACEOUS**
- UPPER JURASSIC (?) AND LOWER CRETACEOUS**
- 5 TANTALUS FORMATION: arkose, siltstone, conglomerate, argillite, coal
- JURASSIC LOWER JURASSIC AND LATER LABERGE GROUP**
- 4 4a, greywacke, arkose, quartzite, conglomerate, siltstone, argillite, hornfels; 4b, mainly conglomerate
- TRIASSIC**
- UPPER TRIASSIC**
- LEWES RIVER GROUP**
- 3 3a, greywacke, siltstone, argillite, conglomerate, and tuffaceous equivalents; 3aa, includes Jurassic rocks; 3b, andesite, basalt flows and associated pyroclastic rocks; 3c, limestone, limestone breccia; 3d, metamorphosed rocks probably belonging to Lewes River group
- PALEOZOIC**
- PENNSYLVANIAN (?) AND PERMIAN**
- TAKU GROUP**
- 2 2a, mainly chert; 2b, greenstone flows and pyroclastic rocks; 2c, limestone, limestone breccia; 2d, metamorphosed volcanic rocks, probably belonging to Taku group; 2ds, metamorphosed volcanic rocks containing numerous serpentine bodies
- PRECAMBRIAN AND LATER**
- YUKON GROUP**
- 1 1a, Quartz-mica, quartz-chlorite, and mica schists; quartzite, micaceous quartzite, gneiss, and amphibolite; 1b, feldspathic gneiss, gneissic granitic rocks, li-pariet gneiss; 1c, crystalline limestone
- A Volcanic rocks of uncertain age; Aa, metamorphosed volcanic rocks

- Bedding (horizontal, inclined, vertical, overturned) ..... + x / x /
- Bedding (dip known, top of bed unknown) ..... + x / x /
- Schistosity, gneissosity (inclined, vertical) ..... / / / / / /
- Slaty cleavage (inclined, vertical) ..... / / / / / /
- Fault (defined, approximate, assumed) ..... - - - - -
- Anticlinal axis (arrow indicates direction of plunge) ..... ~ ~ ~ ~ ~
- Synclinal axis (arrow indicates direction of plunge) ..... ~ ~ ~ ~ ~
- Fossil locality ..... 23 @
- Mine ..... 15 x
- Mineral occurrence ..... 18 x
- Placer deposit ..... x x x

- SYMBOLS FOR METALS AND MINERALS**
- |                   |                 |
|-------------------|-----------------|
| Antimony ..... Sb | Gold ..... Au   |
| Coal ..... Co     | Lead ..... Pb   |
| Copper ..... Cu   | Silver ..... Ag |
| Fluorite ..... Fl | Zinc ..... Zn   |

Geology by J. G. Fyles, 1946; J. R. Johnston, 1947; and J. O. Wheeler, 1948-1951

To accompany G.S.C. Memoir 312 by J. O. Wheeler

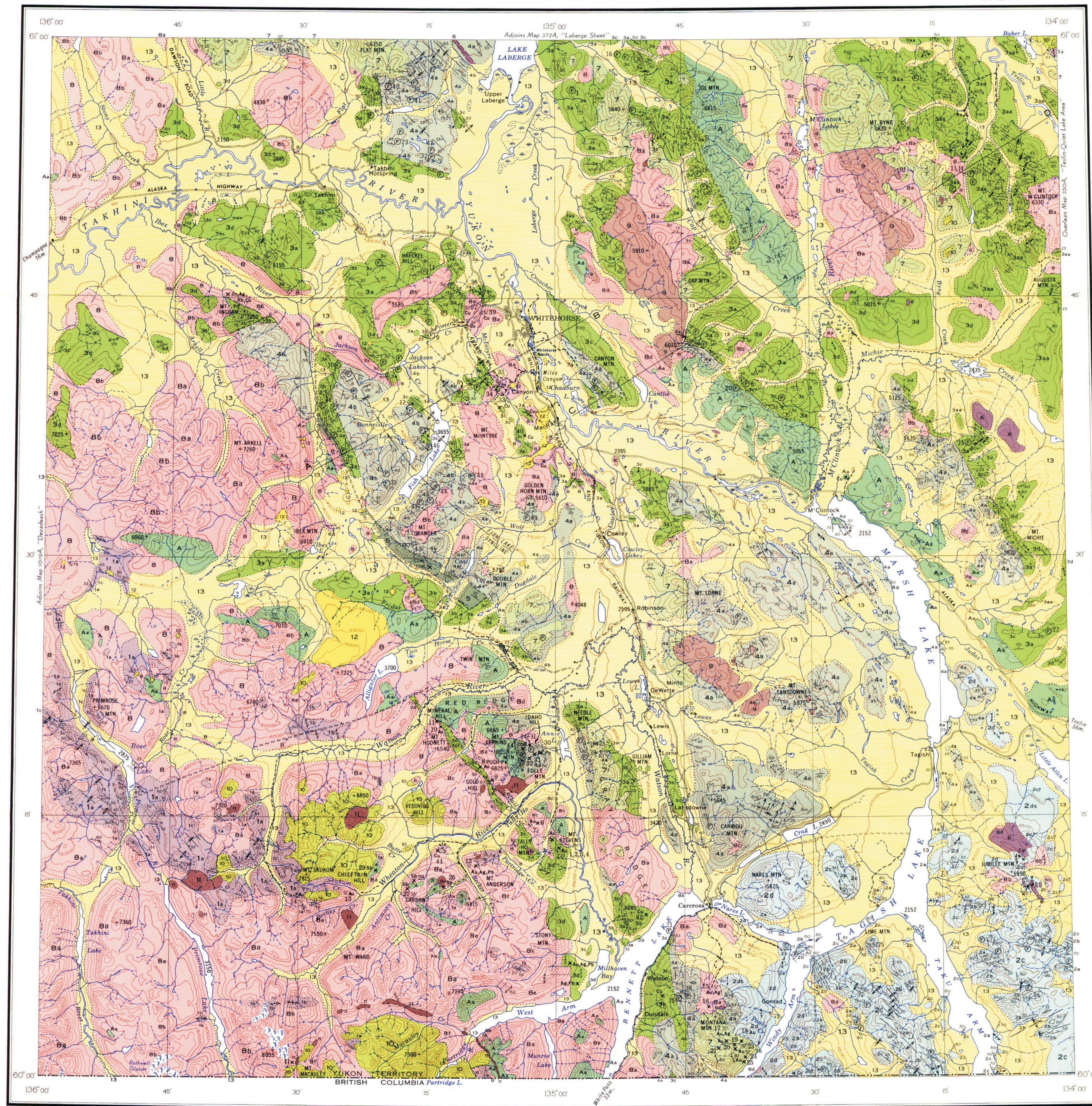
Approximate magnetic declination 31° 16' East

Base-map compiled by the Topographical Survey, 1947

Cartography by the Geological Survey of Canada, 1960

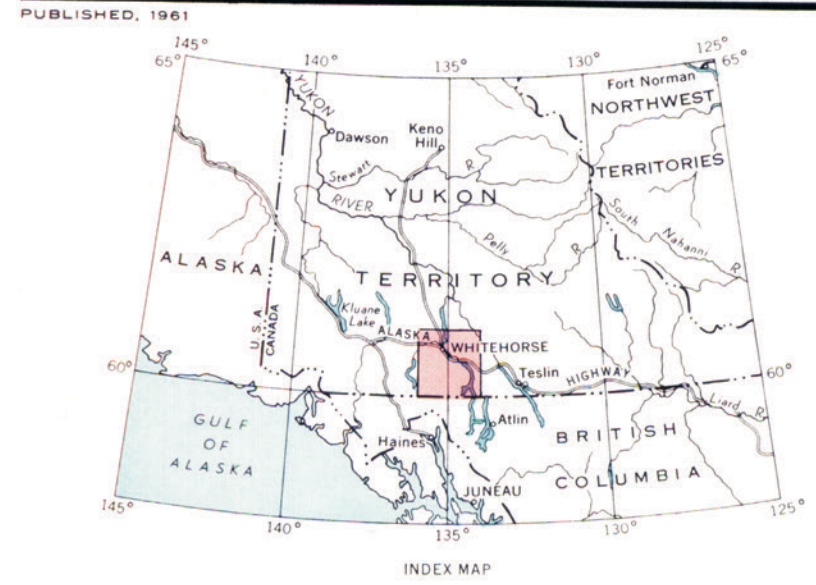
Air photographs covering this map-area may be obtained through the National Air Photographic Library, Topographical Survey, Ottawa, Ontario

This map has been reprinted from a scanned version of the original map.  
Reproduction par numérisation d'une carte sur papier.



SHEET 105 D

- INDEX TO MINING PROPERTIES**
- Gold-Silver
  - 1 Hawk Eye group
  - 2 Acme claim
  - 3 Midnight group
  - 4 Hidden Ore group
  - 5 Buffalo Hump group
  - 6 Wheaton Mountain claims
  - 7 Tally Ho group
  - 8 Gold Reef claim
  - 9 Dail Creek claims
  - 10 Lucky Boy claim
  - 11 Legal Tender claim
  - 12 Mount Anderson claims
  - 13 Mount Reid claims
  - 14 Mascot group
  - 15 Big Thing mine
  - 16 Jean claim
  - 17 Montana mine
  - 18 Joe Petty claim
  - 19 Uranus claim
  - 20 Thistle claim
  - 21 Aurora claim
  - 22 M and M claim
  - 23 Vault mine
  - 24 Venus mine
  - 25 Dail and Fleming groups
  - Antimony-Silver
  - 26 Becker-Cochran claims
  - 27 Fleming claims
  - 28 Goddell's claims
  - 29 Chieftain Hill claims
  - Silver-Lead
  - 30 Idaho Hill claims
  - 31 Export group
  - 32 Cariboo group
  - Copper
  - 33 Arctic Chief mine
  - 34 Grafter mine
  - 35 Best Chance claim
  - 36 Pueblo mine
  - 37 War Eagle claim
  - 38 Anacosta claim
  - 39 Copper King mine
  - 40 Valerie mine
  - 41 Fleming group
  - 42 College Green claim
  - Coal
  - 43 Whitehorse coal
  - 44 Mount Bush coal



MAP 1093A  
GEOLOGY  
**WHITEHORSE**  
YUKON TERRITORY

Scale: One Inch to Four Miles = 1/253,440 Miles

COPIES OF THIS MAP MAY BE OBTAINED FROM THE DIRECTOR, GEOLOGICAL SURVEY OF CANADA, OTTAWA

- REFERENCE**
- Main highway ..... =
  - Other roads ..... =
  - Tail ..... =
  - Building ..... =
  - School ..... =
  - Post Office ..... =
  - Provincial boundary ..... =
  - Intermittent stream ..... =
  - Mud ..... =
  - Sand or gravel ..... =
  - Glacier ..... =
  - Contours (interval 500 feet) ..... =
  - Contours (position approximate) ..... =
  - Height in feet above mean sea level ..... 2490