





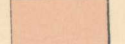
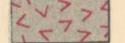


33

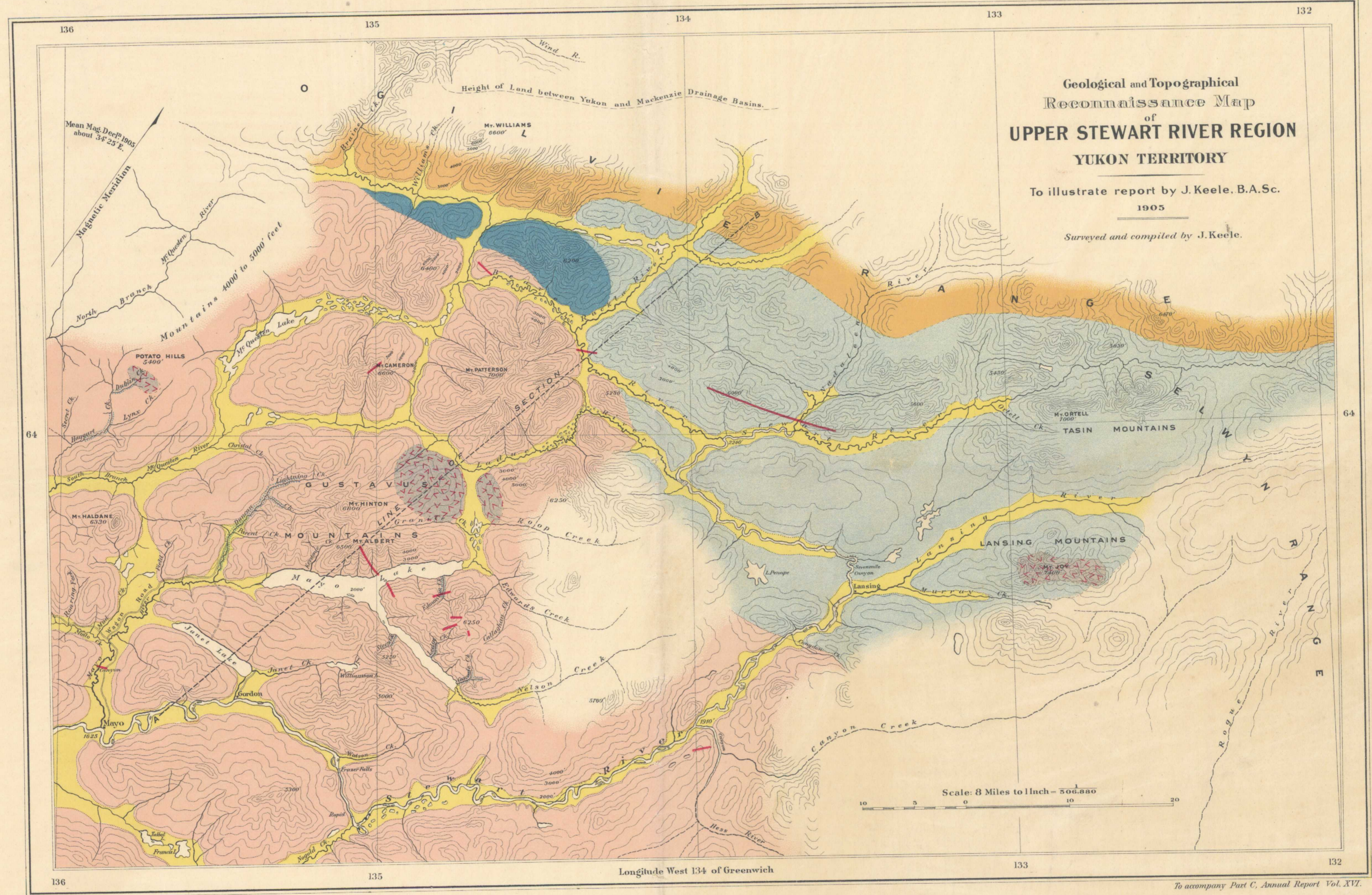
105M

Geological and Topographical
 Reconnaissance Map
 of
UPPER STEWART RIVER REGION
 YUKON TERRITORY

To illustrate report by J. Keele, B.A.Sc.
 1905
 Surveyed and compiled by J. Keele.

Index to Colours and Signs

-  Depositional valleys filled with silts, sands, gravels and glacial deposits.
 -  Various coloured argillites, sandstones, grits, quartzite and limestone (Triassic).
 -  White crystalline limestone and conglomerate (Probably Upper Palaeozoic).
 -  Limestone, quartzite and ferruginous slates (Devonian).
 -  Nices and quartz schists etc. (Quartzite and crystalline limestone. Chiefly metamorphosed sediments.)
 -  Grey biotite granite.
 -  Diorite and Diabase.
 -  Creeks producing gold.
- Contour interval, approximately 500 feet.
 2240' Heights in feet above sea-level.



Scale: 8 Miles to 1 Inch = 500,000

C.O. Senécal, B.A.Sc., Geographer & Chief Draughtsman.

To accompany Part C, Annual Report Vol. XVI.

Nº 938
 Price 10 cts.

NOT TO BE TAKEN FROM LIBRARY
 NE PAS SORTIR DE LA BIBLIOTHÈQUE

105M
 N
 106
 DC
 A

938