

Canada
Department of Mines

HON. CHARLES STEWART, MINISTER; CHARLES CAMSELL, DEPUTY MINISTER.

GEOLOGICAL SURVEY
W. H. COLLINS, DIRECTOR.

Issued 1922

21937
106D

LEGEND

RECENT AND EISTOCENE

Superficial deposits
Soil, slide rock and muck not of sufficient thickness to interfere with prospecting.

Q1
Chiefly sand, gravel, muck and ground-ice, sufficiently thick to prevent prospecting of the underlying bedrock.

EVONIAN (?)

I
Diorite and diabase

NASINA SERIES

A3
Crystalline limestone

A2
Quartz-mica schist, mica schist, and graphite schist.

A1
Quartzite with thin beds of black schist

Symbols

Geological boundary (defined)

Geological boundary (assumed)

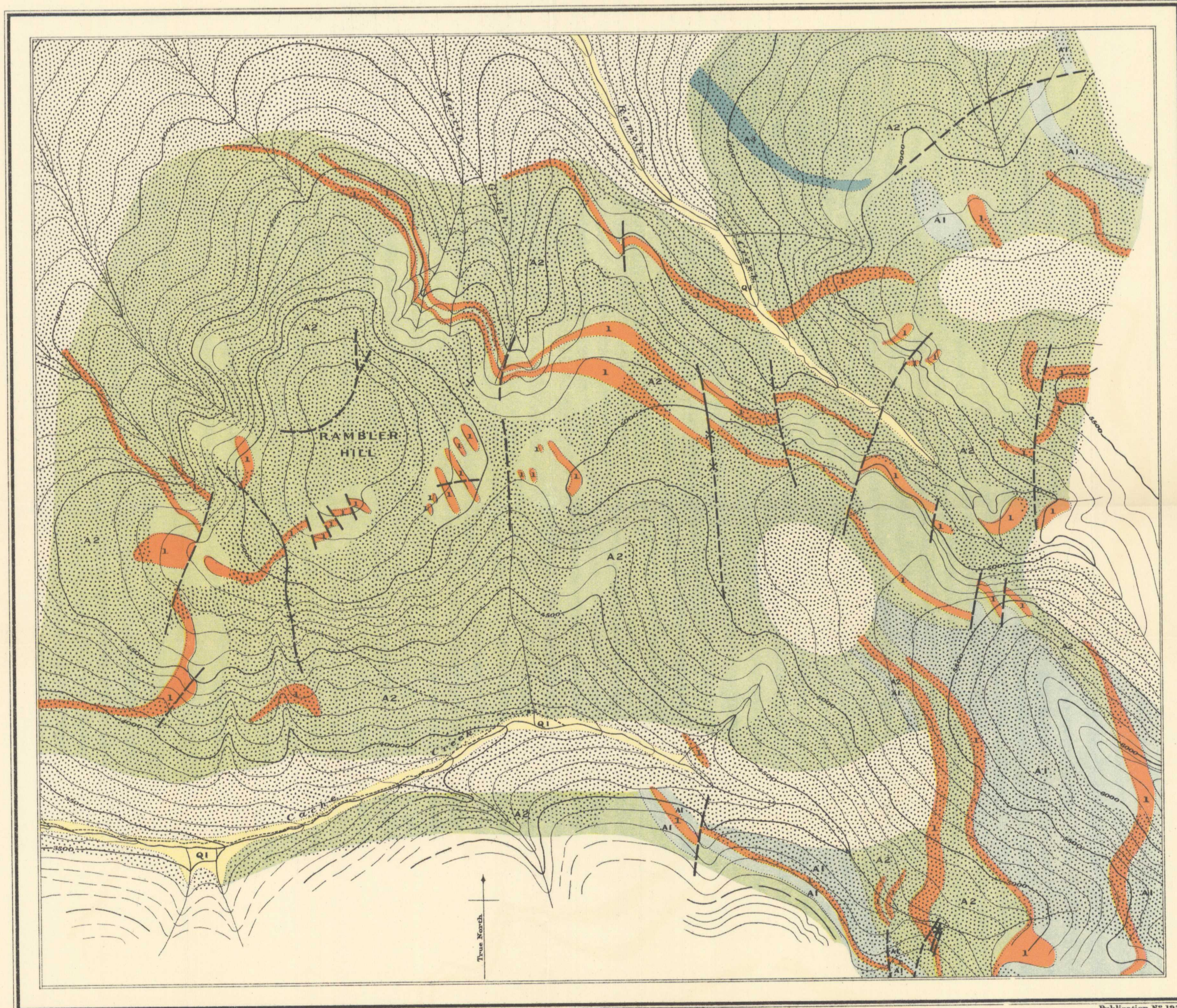
Fault (defined)

Fault (approximate)

Prospect

Trail

Contours, interval 100 Feet



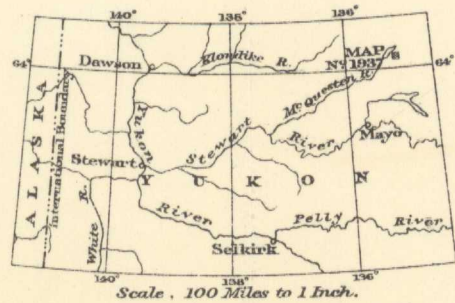
Approximate magnetic declination, 37° 26' East.

C. O. Senécal, Geographer and Chief Draughtman.
A. J. Jones, Draughtman.

Publication No 1937

**RAMBLER HILL AREA, MAYO DISTRICT,
YUKON TERRITORY.**

Scale of Feet
0 1000 2000 3000 4000 5000 6000



To accompany Report by W. E. Cocksfield,
in Summary Report, Part A, 1921.

NOT TO BE TAKEN FROM LIBRARY
NE PAS ÊTRE ENLEVÉ DE LA BIBLIOTHÈQUE
Geology and topographical reconnaissance by W. E. Cocksfield, 1921.

1937