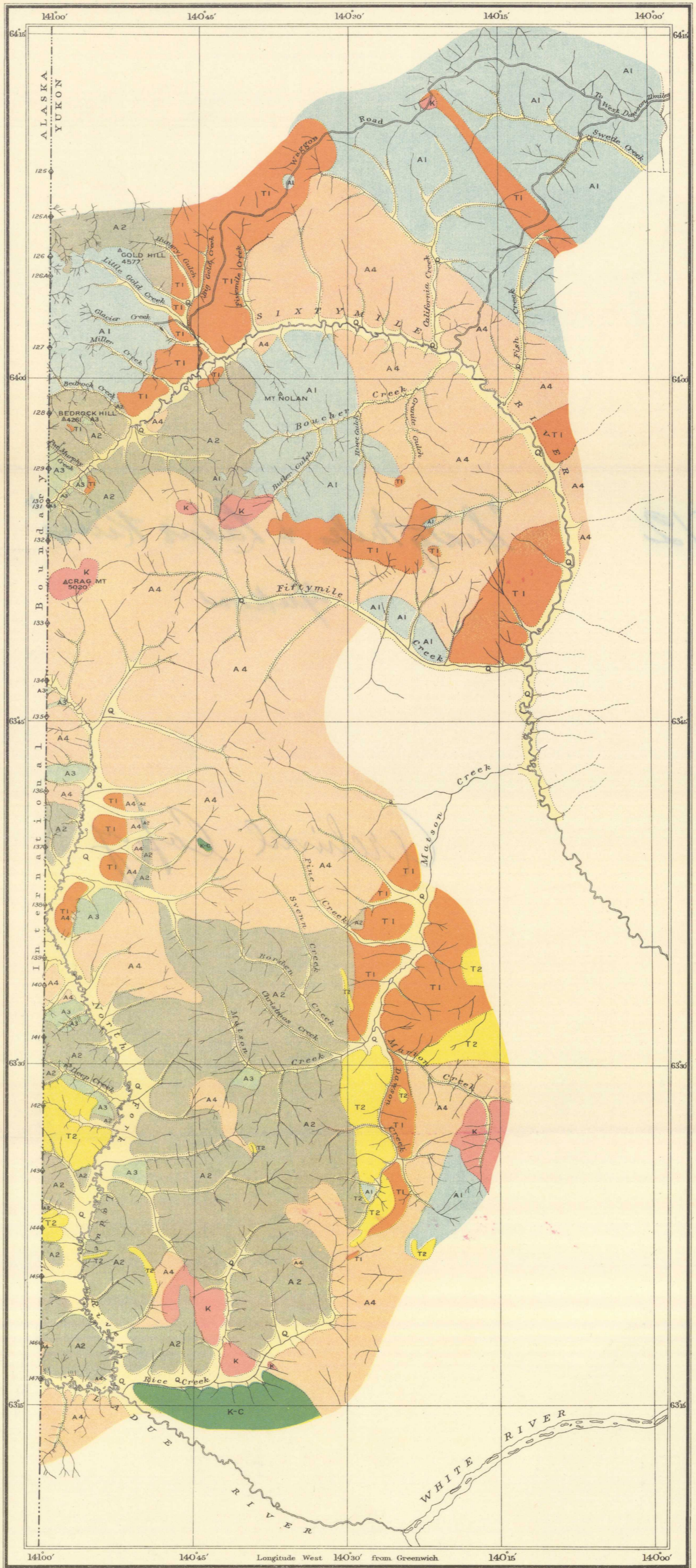


Canada  
Department of Mines

HON. SIR JAMES A. LOUGHEED, MINISTER; CHARLES CAMSELL, ACTING DEPUTY MINISTER

GEOLOGICAL SURVEY  
WILLIAM McINNES, DIRECTOR.

Issued 1920



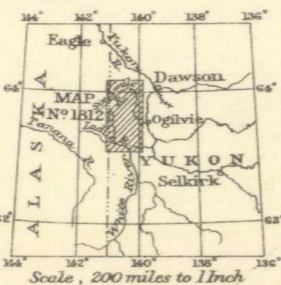
LEGEND

- QUATERNARY**  
RECENT AND PLEISTOCENE  
Q  
Superficial deposits  
(Gravel, sand, silt, muck, volcanic ash, and ground ice)
- TERTIARY**  
T2  
Rhyolite, quartz, porphyry, granite porphyry, with associated tuffs and breccias
- TERTIARY**  
T1  
Newer volcanics, with some sediments  
(Andesite and diabase, associated with sandstones, shales and conglomerates)
- MESOZOIC (?)**  
CRETACEOUS OR JURASSIC  
K  
Granitic intrusives  
(granites and allied plutonic rocks)
- MESOZOIC (?)**  
CRETACEOUS POSSIBLY IN PART OLDER  
K-C  
Older volcanics  
(Andesite and diabase)
- PRECAMBRIAN (?)**  
A4  
Pelly gneisses(?)  
(Chiefly granite gneiss)
- A3  
Amphibolite schists  
(Schistose amphibolites, greenstone schist and allied rocks)
- A2  
Klondike schists(?)  
(Sericite and chlorite series)
- A1  
Nasina series  
(Quartzite, quartz mica schists, mica schist, sheared conglomerate, graphite schist and crystalline limestone)
- Symbols**  
Geological boundary  
(assumed)

International Boundary monuments shown thus ○  
Triangulation stations, International Boundary Survey, shown thus △  
Approximate magnetic declination, 34° East.

C.O. Senecal, Geographer and Chief Draughtsman.  
A. James, Draughtsman.

Publication No. 1812



To accompany Memoir by W.E. Cockfield.

SIXTYMILE AND LADUE RIVERS,  
YUKON TERRITORY.

Scale of Miles

Sources of Information

Geology by W.E. Cockfield, 1917.  
Geography from surveys by W.E. Cockfield, 1917, and from maps of the International Boundary Commission, and the Topographical Survey Branch, Department of the Interior.  
Map compilation by W.E. Cockfield.

NOT TO BE TAKEN FROM LIBRARY  
NE PAS SORTIR DE LA BIBLIOTHEQUE

