

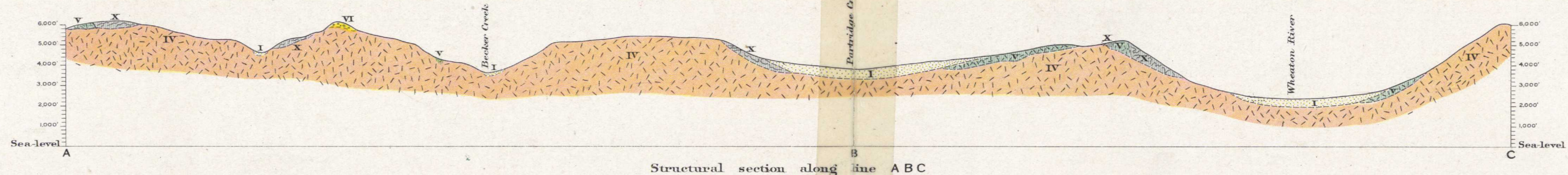
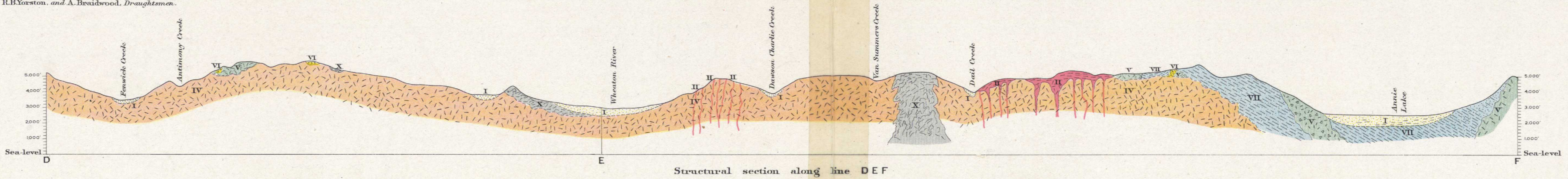
LEGEND

- QUATERNARY**
 RECENT AND PLEISTOCENE
 I Superficial deposits
 Sand, gravel, till, clay and silt, volcanic ash, ground or drift rock, and residual materials.
 II Basalt, granite porphyry, and related volcanic, with their associated tuffs and breccias.
 III Basalt, andesite, and related volcanic, with their associated tuffs and breccias.
 IV Coast Range intrusive
 Granitic rocks, ranging in composition from granite to diorite, with associated porphyritic phases.
MESOZOIC
 CRETACEOUS TO JURASSIC
 V Andesite, basalt, and diabase, with their associated tuffs and breccias.
 VI Tantalus conglomerate
 Conglomerate, with some sandstone, shale, and some of coal.
 VII Laugege series
 Argillite, shale, sandstone, carbonaceous greywacke, conglomerate, and tuff.
CARBONIFEROUS(?)
 VIII Limestone, more or less dolomitic.
DEVONIAN(?)
 IX Pyroxenite and porphyrite.
 X Mount Stevens group
 Schist, gneiss, quartzite, and limestone.
- Symbols**
 Geological boundary observed
 Geological boundary assumed
 Dip and strike

LEGEND

- Culture**
 Buildings
 Roads
 Pack trails
 Bridges
Water
 Rivers and lakes
 Streams (shown approximately)
 Watercourses (with intermittent flow)
 Fresh marshes
Relief
 Contours (showing actual forms and elevations above sea level; interval 200 feet)
 Contours (not well determined)
 Rivers (shown by height in feet above sea level)
 Sandbar
- Geographical position based on that of Stoney and Whitehorse.
 Approximate magnetic declination, 37° East.

Geological, Geographer and Chief Draughtsman: R. H. Yewton, and A. Reisdorf, Draughtsman.

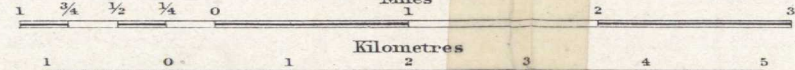


NOT TO BE TAKEN FROM LIBRARY
 NE PAS SORTIR DE LA BIBLIOTHEQUE

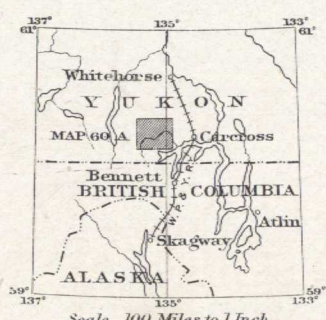
NOT TO BE TAKEN FROM LIBRARY
 NE PAS SORTIR DE LA BIBLIOTHEQUE

MAP 60A
 (Issued 1917)
WHEATON
 YUKON TERRITORY

Scale 62,500



Note: For practical purposes assume 1 MILE TO 1 INCH



TOPOGRAPHY
 (Control, subject to revision) 1908
 PHOTO-SURVEYS BY G. D. CAIRNES.
 COMPILATION BY A. G. HAULTAIN AND D. A. NICHOLS. 1911-1912.

GEOLOGY
 D. D. CAIRNES. 1909, 1915.

To accompany Memoir by D. D. Cairnes

