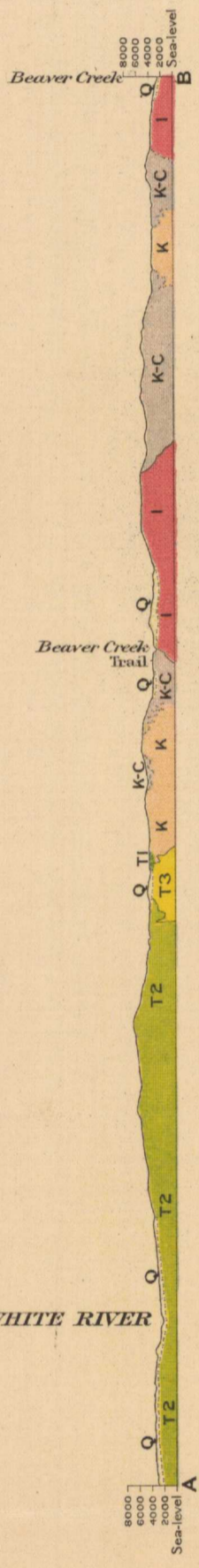


Canada  
Department of Mines

HON. L. CODERRE, MINISTER; R. G. McCONNELL, DEPUTY MINISTER.

GEOLOGICAL SURVEY



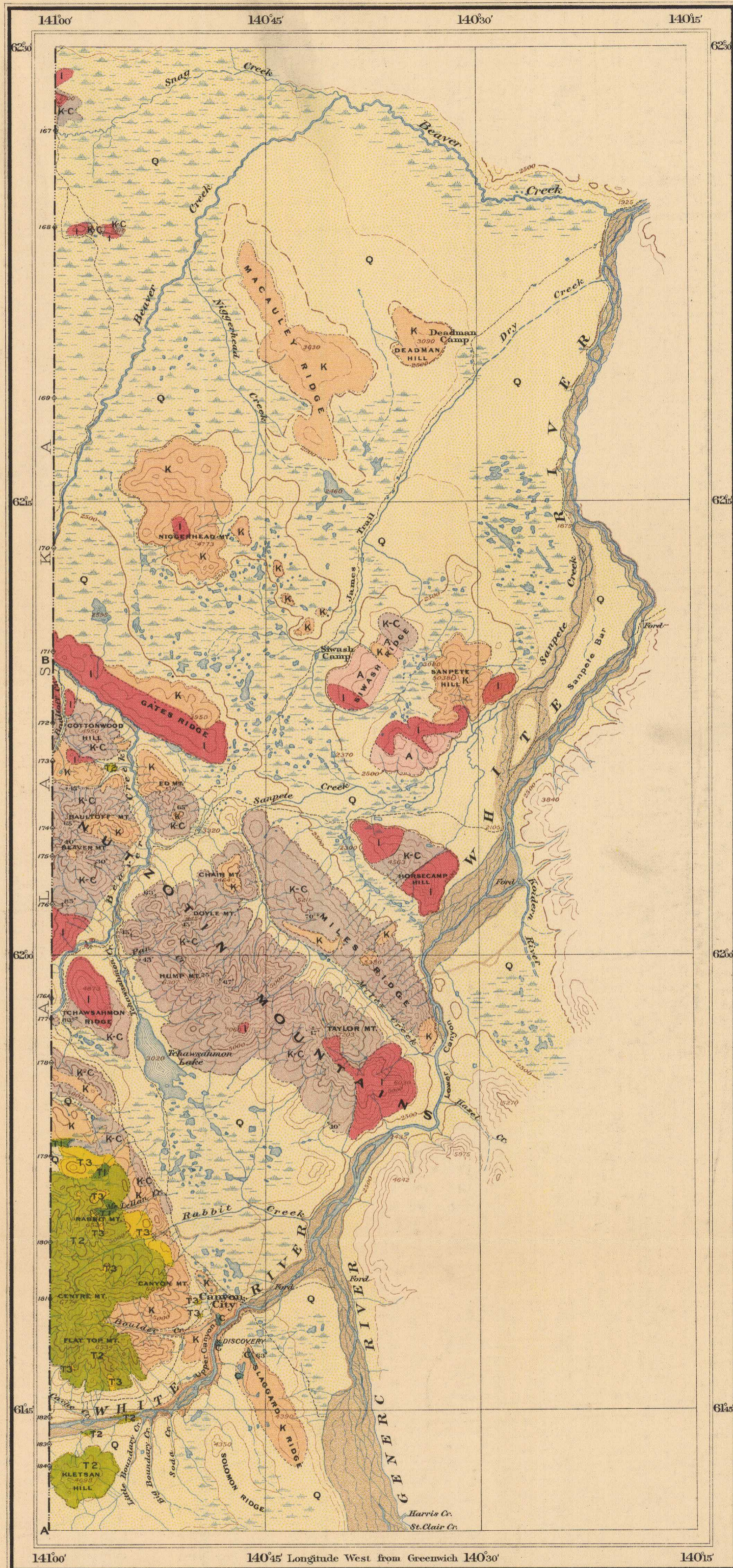
Section A-B along International Boundary

LEGEND

QUATERNARY	RECENT AND PLEISTOCENE	Q	Superficial deposits (gravel, sand, silt, boulder clay, mud, peat, soil, ground ice, volcanic ash)
TERTIARY	POST-EOCENE POSSIBLY IN PART PLEISTOCENE	T3	Rhyolite, latite and Related Volcanics
		T2	Newer Volcanics (mainly augite andesite and basalt, dominantly anhydrolite or pumiceous, with related pyroclastics)
MESOZOIC	EOCENE POSSIBLY IN PART OLIGOCENE	T1	Tertiary Sediments (conglomerate, sandstone, clay, shale, thin seams of lignite)
	CRETACEOUS OR JURASSIC	I	Granitic Intrusives (group of rocks ranging from granite to gabbro)
MESOZOIC	CRETACEOUS TO OLDER	K	Older Volcanics (andesite, diabase, basalt, and related pyroclastics)
	CRETACEOUS TO CARBONIFEROUS	K-C	Shale, sandstone and conglomerate (occasional limestone bed in Carboniferous member; includes dykes and small irregular areas of older volcanics)
PALAEZOIC	CARBONIFEROUS	C	Massive limestone with some shale and chert
PRE-CAMBRIAN		A	Yukon group (mainly schistose amphibolites, quartzite schists and mica schists)

**Symbols**

- Geological boundary (observed)
- Geological boundary (assumed)
- Dip and strike

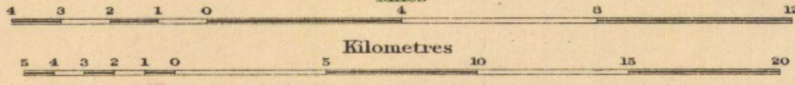


C. O. Senecal, Geographer and Chief Draughtsman, A. Dickson, Draughtsman.

MAP 123 A  
(Issued 1915)

UPPER WHITE RIVER DISTRICT  
YUKON TERRITORY

Scale, 250,000  
Miles



Note. For practical purposes assume 4 MILES TO 1 INCH

LEGEND

Culture

- Buildings
- Trails
- Prospects
- Prospects (location approximate)
- International boundary and monuments

Water

- Rivers and streams
- Lakes and ponds
- Streams (shown approximately)
- Ponds (shown approximately)
- Swamp

Relief

- Contours (showing land forms and elevations above sea level; Interval 500 feet)
- Contours (not well determined)
- Figures (showing heights in feet above sea level)
- Cliffs and steep banks on river
- Sand and gravel

Average magnetic declination 32° 45' East

LIBRARY / BIBLIOTHÈQUE  
A: 12 1915  
GEOLOGICAL SURVEY  
COMMISSION GÉOLOGIQUE



To accompany Memoir by D. D. Cairnes.

MAP LIBRARY / CARTOTHEQUE

NOT TO BE TAKEN FROM LIBRARY  
NE PAS SORTIR DE LA BIBLIOTHÈQUE

123A