

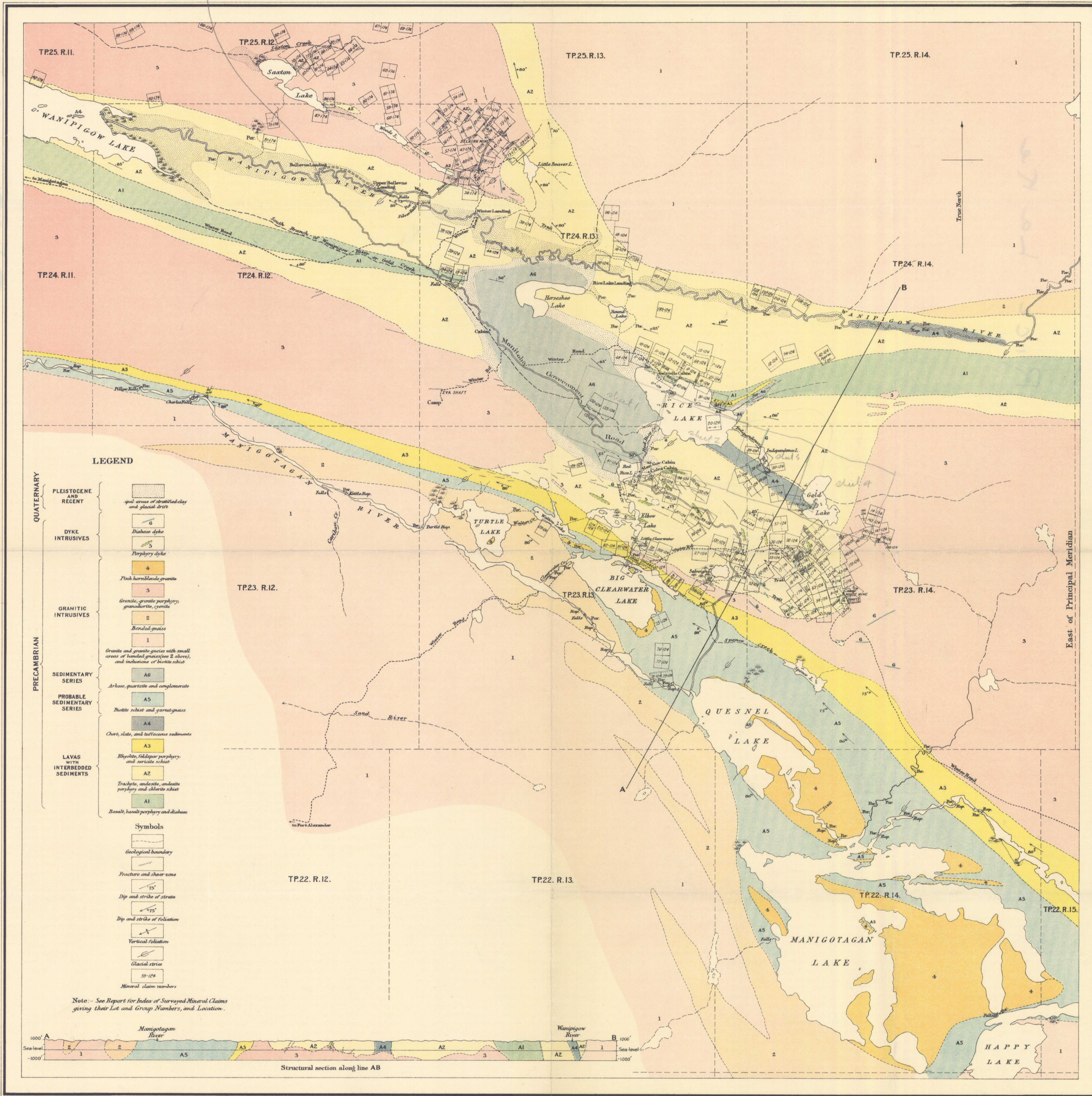
Canada
Department of Mines

HON. CHARLES STEWART, MINISTER; CHARLES CAMSELL, DEPUTY MINISTER.

GEOLOGICAL SURVEY
W. H. COLLINS, DIRECTOR.

Issued 1923.

*Government
Landings*



52-M

C. O. Sandwell, Geographer and Chief Draughtsman.
R. B. Yorston, Draughtsman.

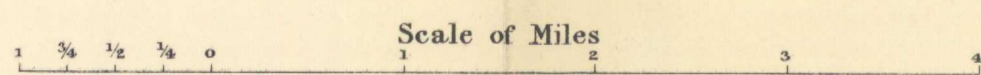
Publication No. 1392

PRELIMINARY MAP OF A PORTION OF RICE LAKE MINING DISTRICT, SOUTHEAST MANITOBA.

Sources of Information

Geology by J. F. Wright, 1922.
Base map from surveys by Topographical Surveys Branch,
Department of the Interior, and J. F. Wright, 1922.

To accompany report by J. F. Wright,
in Summary Report, Part C, 1922.



52 M
NOT TO BE TAKEN FROM LIBRARY
NE PAS SORTIR DE LA BIBLIOTHÈQUE

★
1992