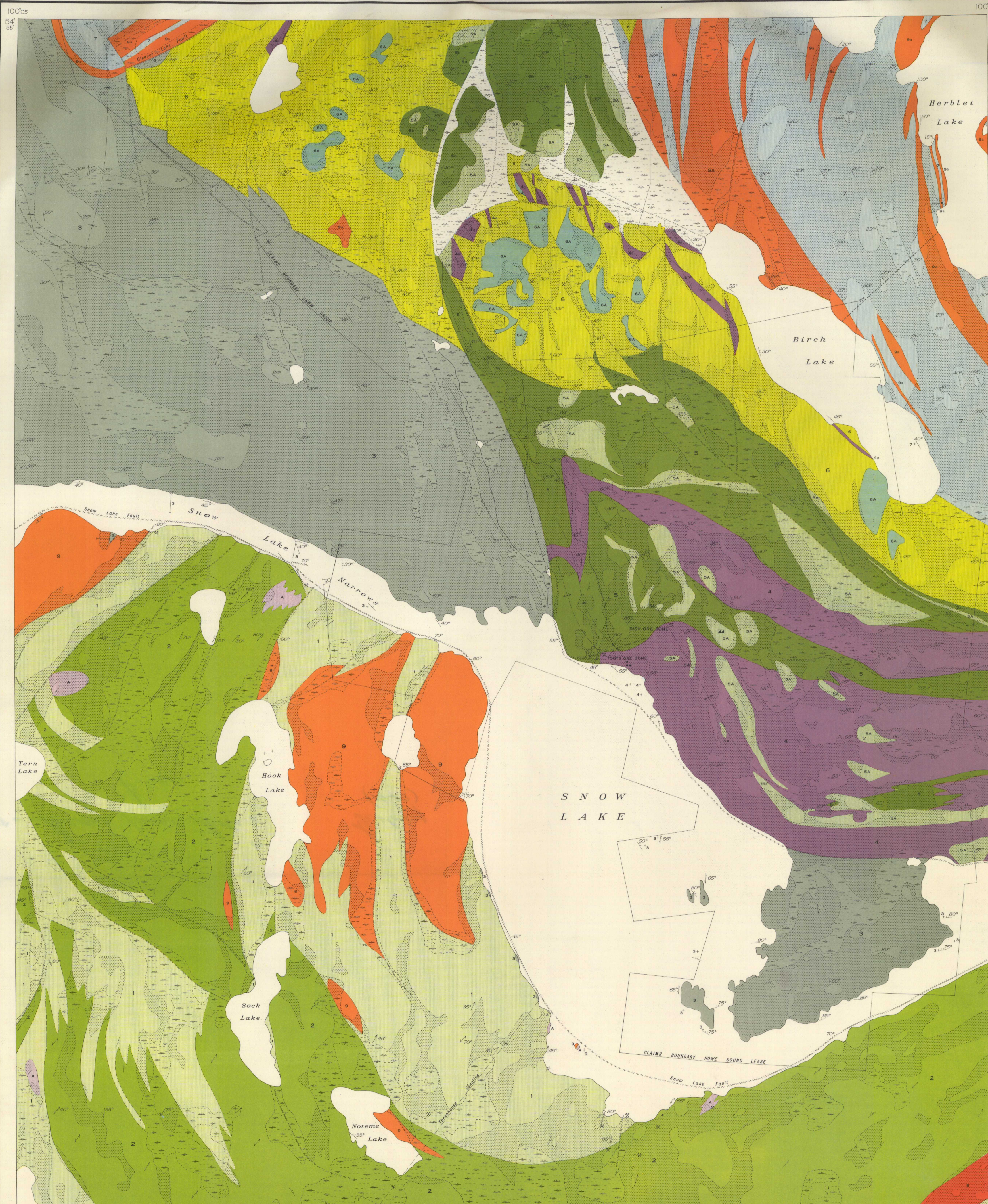


GEOLOGICAL SURVEY

100°05'



LEGEND

- |                    |    |                                                                                                                                                                                                                           |
|--------------------|----|---------------------------------------------------------------------------------------------------------------------------------------------------------------------------------------------------------------------------|
|                    | 9  | Hornblende, gabbro, diorite, in part garnetiferous; 9a, amphibolite, biotite diorite                                                                                                                                      |
|                    | 8  | "Quartz-eye" granite and related porphyry. May be older than 3                                                                                                                                                            |
| <b>SNOW GROUP</b>  |    |                                                                                                                                                                                                                           |
|                    | 7  | Arkose, minor greywacke, derived, sparsely garnetiferous gneisses                                                                                                                                                         |
|                    | 6  | Basic flows, minor tuffs, and undifferentiated diorite, partly gneissic                                                                                                                                                   |
|                    | 6A | 6A, fine- to medium-grained diorite                                                                                                                                                                                       |
|                    | 5  | Coarse, hornblende-rich agglomerate, breccia, tuff, and minor undifferentiated basic intrusions; 5a, finely bedded basic tuff; 5b, highly altered and carbonatized basic tuff and breccia; probably some basic intrusions |
|                    | 5A | 5A, medium- to coarse-grained hornblende porphyry, gabbro, diorite, and feldspar porphyry                                                                                                                                 |
|                    | 4  | Acidic lavas and pyroclastic rocks interbedded with large amounts of feldspathic sedimentary rocks; minor acidic intrusions, 4a, rhyolite                                                                                 |
|                    | 3  | Staurolite schist with interbeds of garnet gneiss and schist; minor argillite                                                                                                                                             |
| <b>AMISK GROUP</b> |    |                                                                                                                                                                                                                           |
|                    | 2  | Basic volcanic breccia, agglomerate, and tuff; minor flows and argillite, undifferentiated diorite                                                                                                                        |
|                    | 1  | Massive and pillowed basic flows, flow breccias; minor pyroclastic rocks; amphibolites; undifferentiated related basic intrusions                                                                                         |
|                    | A  | Feldspathized, silicified, and garnetized basic volcanic rocks (1,2), some "quartz-eye" granite                                                                                                                           |

ARCHAEO OR PROTEROZOIC

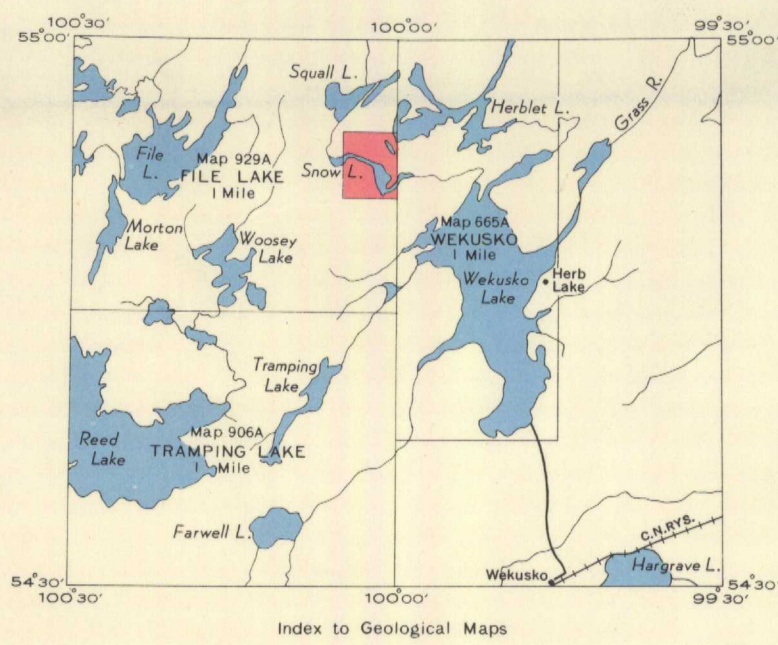
ARCHAEO

- Drift-covered areas with few or no outcrops.....
- Bedding (inclined).....
- Bedding, upper side of bed unknown (inclined, vertical).....
- Foliation (inclined, vertical, dip unknown).....
- Schistosity, gneissosity (inclined, vertical, dip unknown).....
- Faults and shear zones (inclined, dip unknown).....
- Direction and amount of plunge determined from linear elements.....
- Location of prospect.....
- Shaft.....
- Diamond drill-hole.....
- Anticlinal axis.....
- Synclinal axis.....

- Trail or portage.....
- Cabin.....
- Marsh.....
- Reef or small island.....

Geology by J. M. Harrison 1944, 1945, 1946.

Base-map compiled by the Topographical Survey, 1945.  
Cartography by the Drafting and Reproducing Division, 1947.



Index to Geological Maps

PUBLISHED: 1948

MAP 930A  
**NOR-ACME MINE AREA**  
MANITOBA

Scale, 1:2500 or 1 Inch to 1000 Feet



Approximate magnetic declination, 14°15' East.

NOT TO BE TAKEN FROM LIBRARY  
NE PAS SORTIR DE LA BIBLIOTHÈQUE



930A