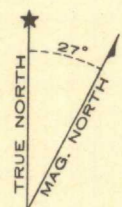


LEGEND

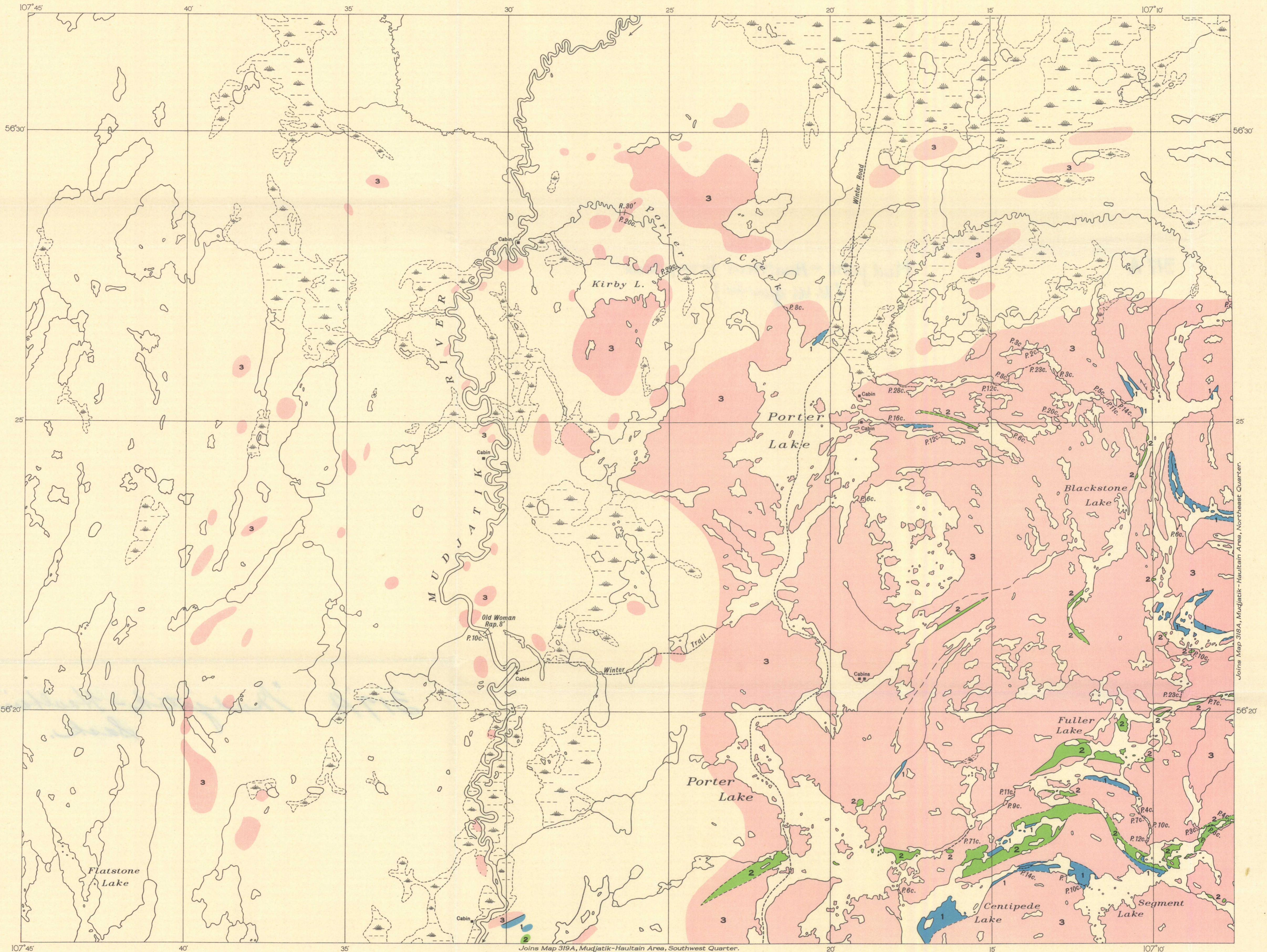
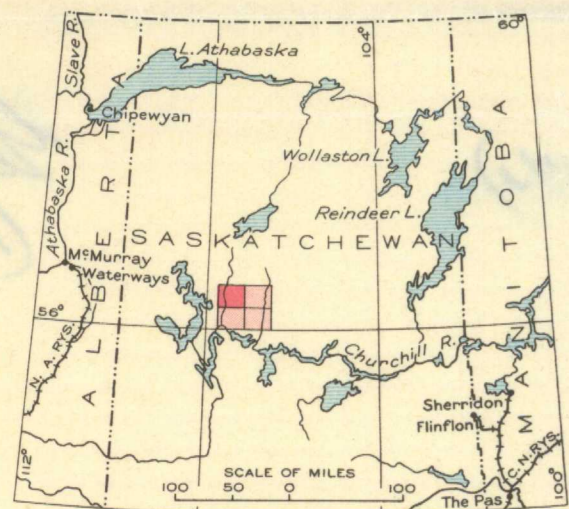
- Sand plain (uncoloured areas)  
 3 Granite, granite-gneiss, pegmatite  
 2 Gabbro and other basic intrusives, now partly altered to amphibolitic rocks, and sediments extensively invaded by these intrusives  
 1 Garnet-biotite gneiss, quartzite, argillite, limestone

- Geological boundary (defined) .....  
 Geological boundary (approximate) .....  
 Foliation (inclined, vertical) .....  
 Glacial striae .....  
 Trail or portage .....  
 Muskeg .....

Geology by F. J. Alcock, 1934.  
Topography from base-map supplied by the Topographical and Air Survey Bureau, Department of the Interior.

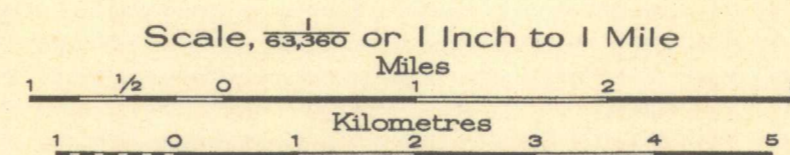


Approximate magnetic declination, 27° East.



Joins Map 319A, Mudjatik-Haultain Area, Southwest Quarter.

MAP 317A  
(PUBLICATION NO. 2377)  
NORTHWEST QUARTER  
**MUDJATIK-HAULTAIN AREA**  
SASKATCHEWAN



NOT TO BE TAKEN FROM LIBRARY  
NE PAS SORTIR DE LA BIBLIOTHÈQUE

