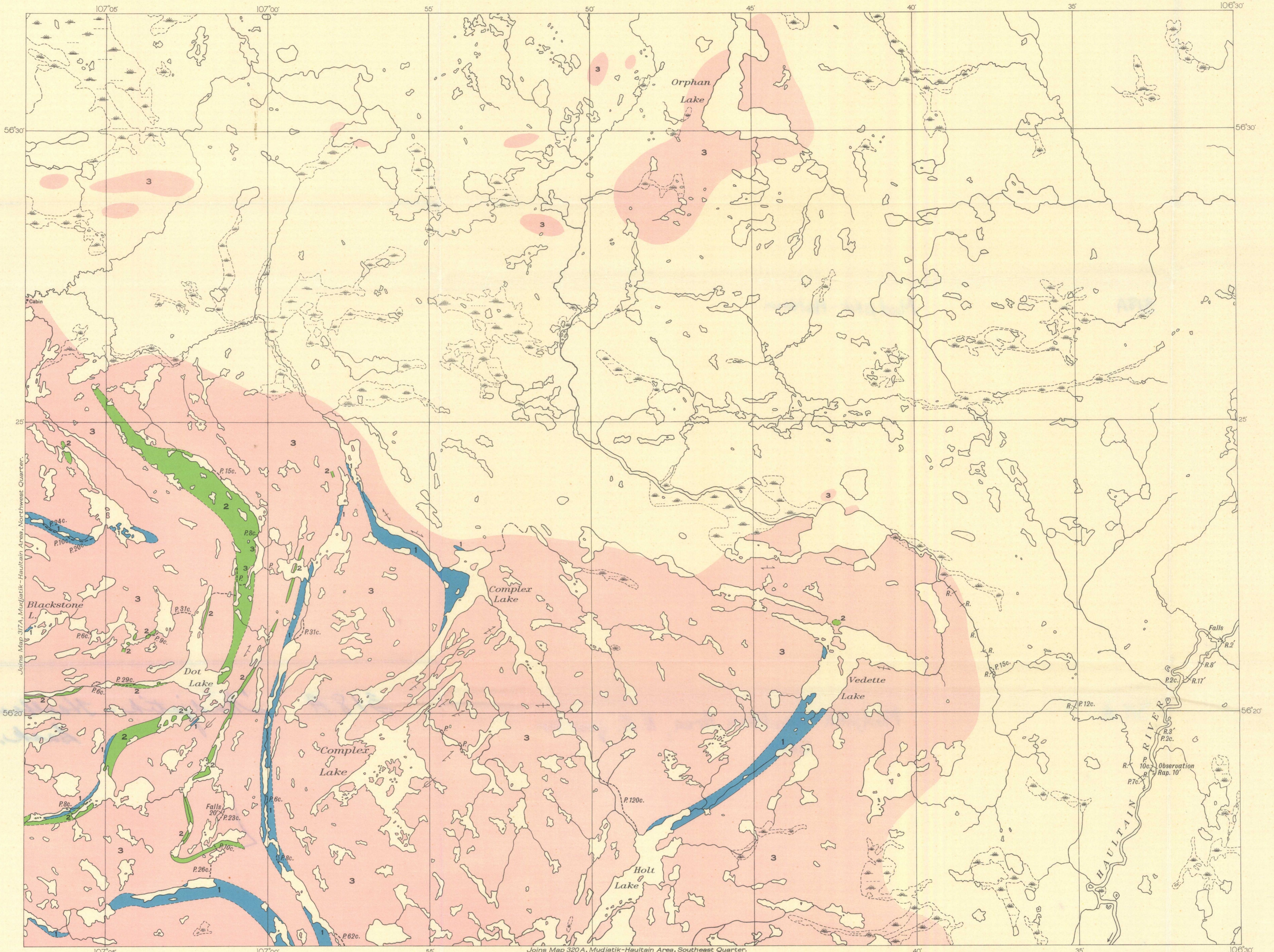
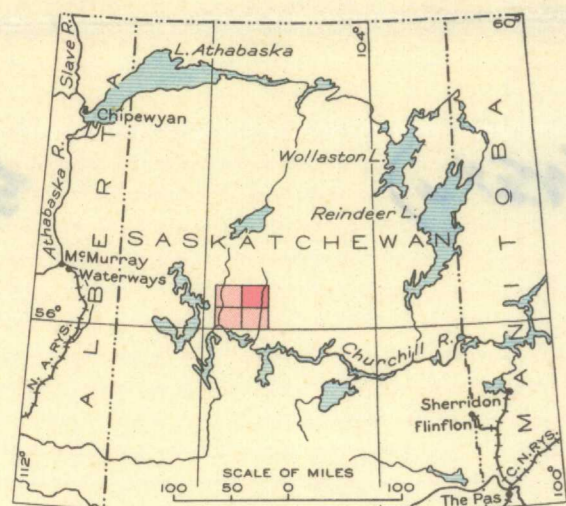


- LEGEND**
- PRECAMBRIAN**
- 3 Granite, granite-gneiss, pegmatite
  - 2 Gabbro and other basic intrusives, now partly altered to amphibolitic rocks, and sediments extensively invaded by these intrusives
  - 1 Garnet-biotite gneiss, quartzite, argillite, limestone

- Geological boundary (defined).....
- Geological boundary (approximate).....
- Foliation (inclined, vertical).....
- Glacial striae.....
- Trail or portage.....
- Muskeg.....

Geology by F. J. Alcock, 1934.  
Topography from base-map supplied by the Topographical and Air Survey Bureau, Department of the Interior.

Approximate magnetic declination, 27° East.



NOT TO BE TAKEN FROM LIBRARY  
NE PAS SORTIR DE LA BIBLIOTHÈQUE

MAP 318A  
(PUBLICATION NO. 2378)  
NORTHEAST QUARTER  
**MUDJATIK-HAULTAIN AREA**  
SASKATCHEWAN

