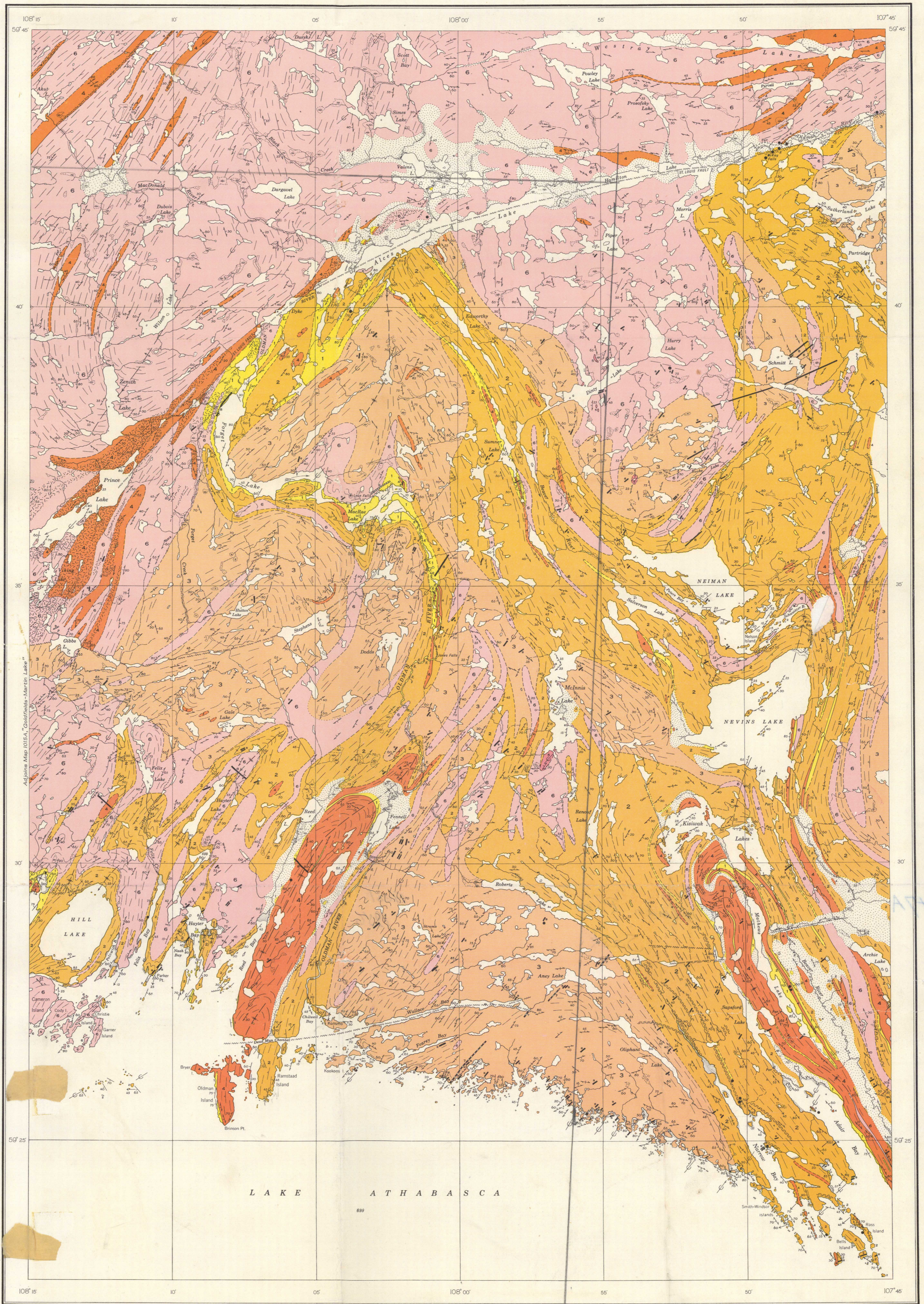


Generalized structure-section across southern part of map-area



LEGEND

- PROTEROZOIC**
- 9 Diabase
 - 8 Lamprophyne
 - 7 Quartz monzonite
- ARCHEAN OR PROTEROZOIC**
- 6 Granite, granite-gneiss, pegmatite and related rocks
 - 5 Norite
 - 4 Amphibolite, pyroxene amphibolite and other mafic rocks. Age and origin uncertain but all apparently pre-granite (6)
- TAZIN GROUP (1-3)**
- 3 Paragneiss
 - 2 Migmatite
 - 1 Quartzite

- Drift-covered area
- Bedding (horizontal, inclined, vertical)
- Structural trend lines from aerial photographs and direction of determined dip
- Clasticity, schistosity (folded, vertical, dip, unswayed)
- Lineation
- Fault
- Anticlinal axis (arrow indicates direction of plunge)
- Synclinal axis (arrow indicates direction of plunge)
- Mylonite zone
- Gossan zone
- Glacial striae
- Radioactive mineral occurrence

Geology by D.A.W. Blake 1950, 1951

- Building
- Trail or portage
- Survey monument
- Stream (position approximate)
- Fall and rapid
- Marsh
- Reef
- Sand or gravel
- Height in feet above mean sea-level

Base-map compiled by the Topographical Survey, 1939 and 1940, from aerial photographs taken by the Royal Canadian Air Force, June 1939; Cartography by the Geological Cartography Unit, 1955

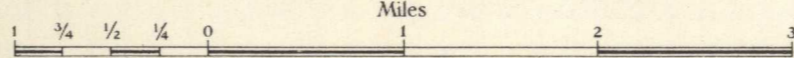
Air photographs covering this map-area may be obtained through the National Air Photographic Library, Topographical Survey, Ottawa, Ontario

Approximate magnetic declination, 25°41' East



MAP 1047A
OLDMAN RIVER
SASKATCHEWAN

Scale: One Inch to One Mile - 63,360



NOT TO BE TAKEN FROM LIBRARY
NE PAS SORTIR DE LA BIBLIOTHÈQUE

1047A