

GEOLOGICAL SERIES

LEGEND

- ARCHAEAN OR PROTEROZOIC**
- 11 Diabase
 - 9 Granite, granodiorite, quartz diorite; porphyritic granite and granite-gneiss; pegmatite; some alaskite, syenite, diorite, and gabbro; 9a, sheared granite-gneiss, may be in part of pre-Sickle age; 9b, mainly porphyritic varieties; 9c, mainly quartz diorite
 - 7 Diorite and gabbro, altered in places; includes some basic volcanic rocks and granitic rocks; hornblende; not all of the same age; 7a, includes abundant hornblende schist and gneiss and granitic rocks; 7b, gabbro, anorthosite; amphibolites; norite
 - 4 SICKLE SERIES
Arkose, feldspathic sandstone, greywacke, quartzite, mica schist; thin lava flows; 4a, conglomerate
 - 3 PRE-SICKLE (1-3)
Quartz-mica schist and gneiss, greywacke, quartzite; conglomerate; thin-bedded tuff and volcanic breccia; minor amounts of lava; iron formation; 3A, WASEKWAN SERIES (in part)
 - 2 Basic lava, amphibolite, hornblende gneiss and schist; tuff, volcanic breccia; some acidic lava; minor amounts of mica schist and quartzite; some acidic and basic intrusions; 2A, WASEKWAN SERIES (in part)
 - 1 Sedimentary rocks (3) interbedded with volcanic rocks (2) in about equal proportions; 1A, WASEKWAN SERIES (in part)
 - 5, Quartz-biotite and garnet schist; quartzite, argillite, arkose; minor amounts of hornblende schist and gneiss; some pegmatite and apilite dykes; may not all be derived from rocks of the same age; 5a, probably derived from Sickle sediments; 5b, includes considerable amounts of volcanic rocks
 - 6, Mainly hornblende schist and gneiss; may not all be derived from rocks of the same age; 6a, associated with abundant granitic rocks
 - 10 Granite and granite-gneiss (9) with equal or lesser amounts of schist and gneiss (5)
 - 8 Gneiss and schist (altered sedimentary and volcanic rocks); lesser amounts of granite and granite-gneiss; 8a, probably derived from Sickle series (Kiseeynew gneisses)

Note: Map-units 1, 2, and 3 are lithological units of pre-Sickle age, and members of each unit may be older or younger than members of the others. Note: or all of map unit 5, south of latitude 56°00', may be correlated with 8a, the Kiseeynew complex of the Sherridon area.

- Heavily drift-covered areas.....
Fault.....
Anticlinal axis.....
Synclinal axis.....
Glacial striae.....
Esker.....
Mineral occurrence.....xCu
Mining property.....I

SYMBOLS FOR METALS OR MINERALS

- Arsenic.....As
Copper.....Cu
Gold.....Au
Lead.....Pb
Molybdenum.....Mo
Nickel.....Ni
Pyrite or pyrrhotite.....Py
Zinc.....Zn

LIST OF MINES AND PROSPECTS

- | | |
|--|------------------------------------|
| 1 Lasthope Lake (Au, Cu, Zn) | 9 Pump Lake (Au, Cu) |
| 2 Central Manitoba Option (Au, Pb, Zn) | 10 G.L.M.C. (East group) (Au, Cu) |
| 3 Johnson (Au) | 11 Tor (Cu) |
| 4 Franklin Lake (Au) | 12 Lynbar Mines (Cu, Ni) |
| 5 Austin (Au, Pb, Zn) | 13 Barrington Lake Copper (Cu, Mo) |
| 6 Ace (Au, Pb, Zn) | 14 L.D. (Cu) |
| 7 Granville Lake Mines (Au) | 15 Ace (Cu) |
| 8 Lind (Au) | 16 Lynn Lake (Ni, Cu) |

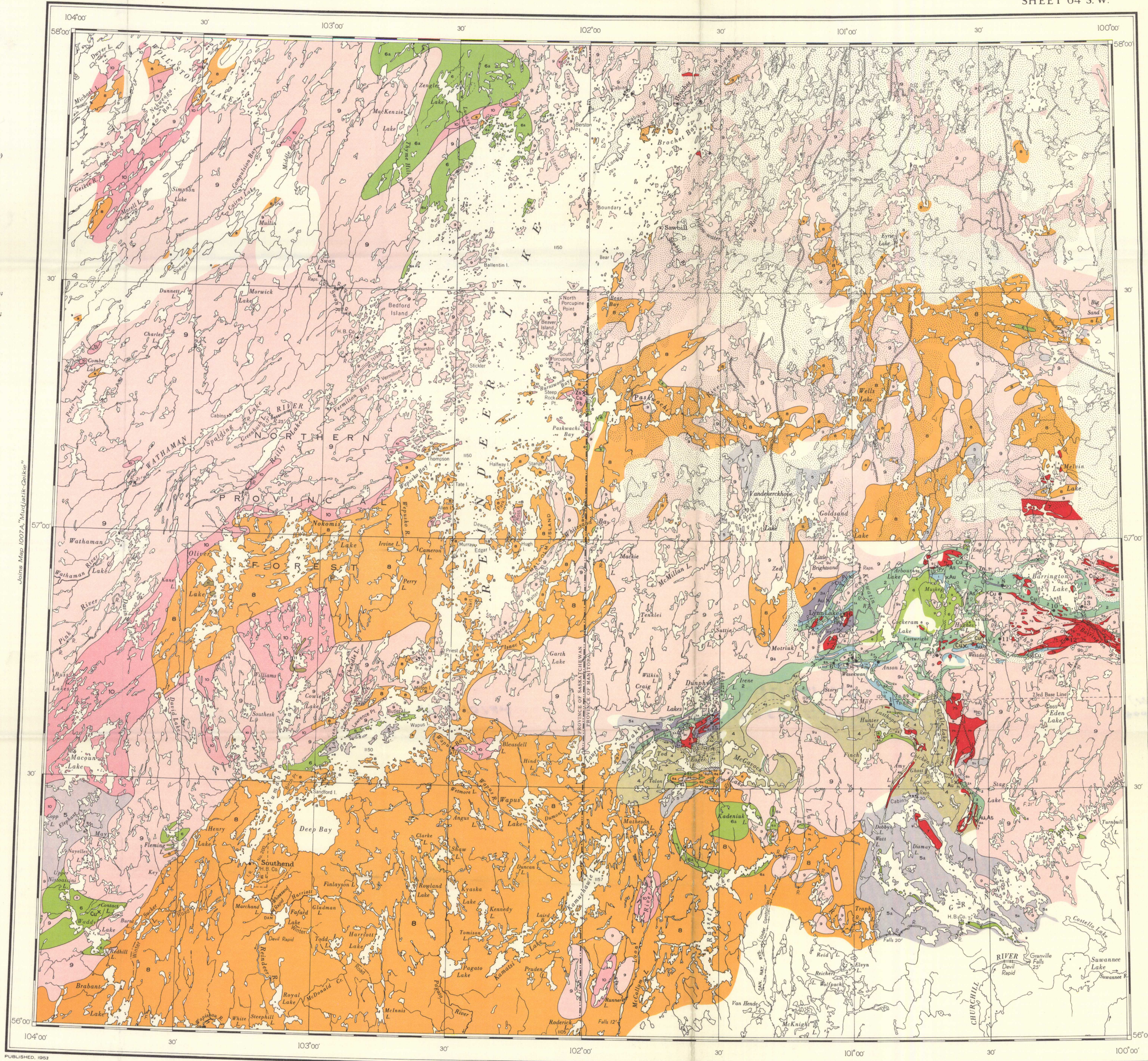
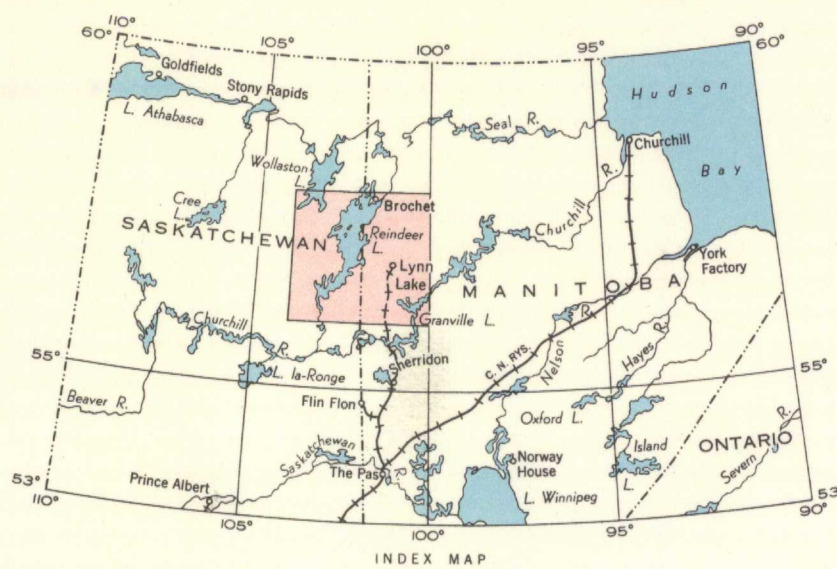
Geological information compiled by H.M.A. Rice, 1950, from published maps of the Geological Survey of Canada and the Department of Mines and Natural Resources, Manitoba

Cartography by the Geological Mapping Division, 1952

- Provincial boundary.....
Surveyed line.....
Settlement.....
Trading post.....
Falls and rapid.....
Height in feet above mean sea-level.....1150

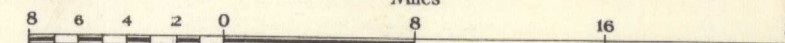
Base-map compiled and drawn by the Surveys and Mapping Branch

Approximate magnetic declination, 17° 24' East



MAP 1016A
REINDEER LAKE
SASKATCHEWAN-MANITOBA

Scale: One Inch to Eight Miles = $\frac{1}{506,880}$
Miles



NOT TO BE TAKEN FROM LIBRARY
NE PAS SORTIR DE LA BIBLIOTHÈQUE

1026A