

79°07' GEOLOGICAL SURVEY

06'

Joins Map 455 A, "Waite Area"

04'

79°03'

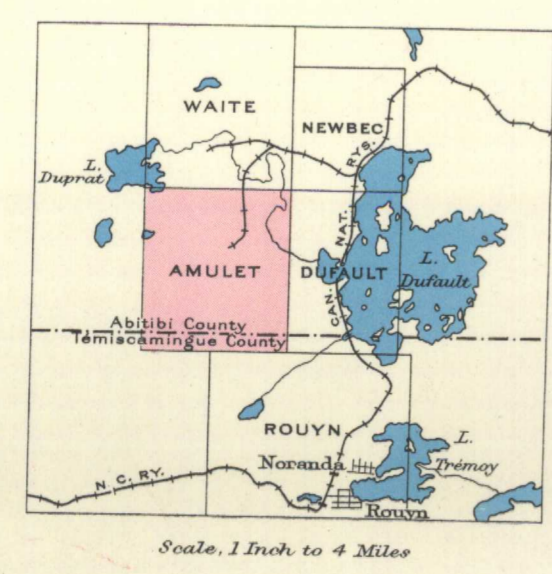
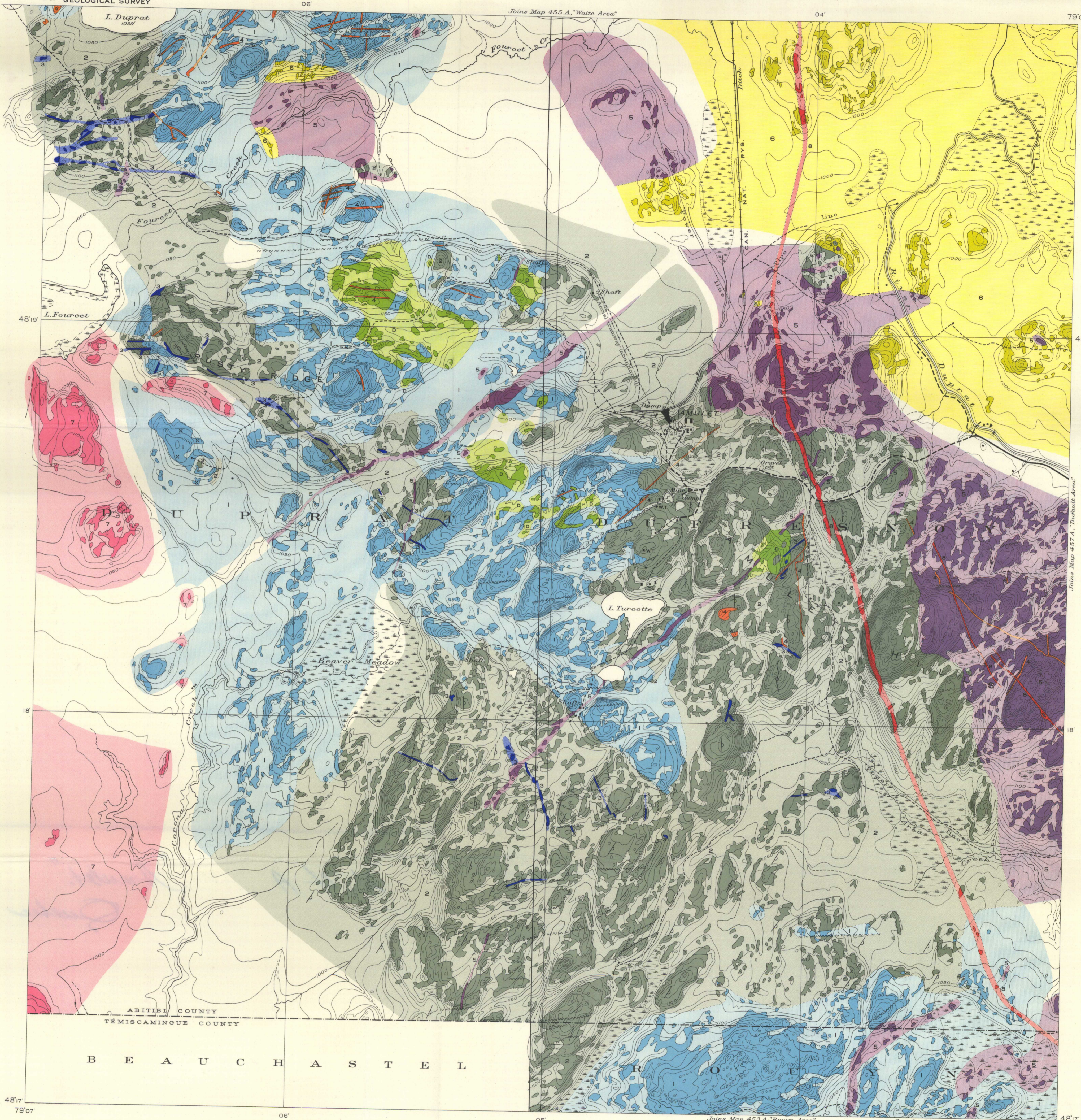
LEGEND

NOTE: Outcrops or areas of outcrop of a formation are shown by deep colour; inferred extensions of a formation beneath drift are shown by a lighter tint of the same colour except in certain areas which are uncoloured.

- PROTEROZOIC (LATE PRECAMBRIAN)**
- 8 Quartz diabase and quartz gabbro
- POST-KEEWATIN**
- 7 Granite (alaskite)
 - 6 Granodiorite
 - 5 Chiefly quartz diorite, some gabbro
 - 4 Basic to intermediate intrusives, chiefly andesite (in part older than 3 and younger than 5)
 - 3 Rhyolite (quartz-feldspar) porphyry (in part younger than 4)
- KEEWATIN**
- 2 Andesite, andesite flow breccia, and small amounts of chert
 - 1 Rhyolite and rhyolite flow breccia
 - D Dalmatianite

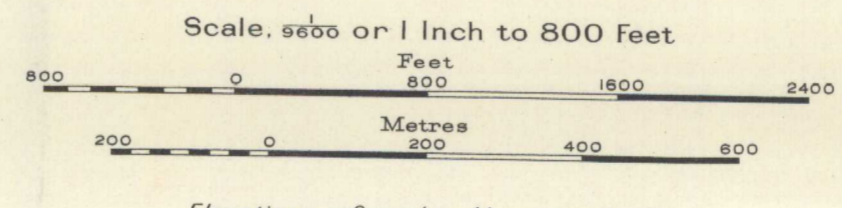
- Geological boundary (defined, assumed) ————
 Flow contacts (defined, assumed) ————
 Strike and dip of flow contact ————
 Vertical flow contact ————
 Strike and top of pillow structure ————
 Fault, shear zone, or vein (defined, assumed) ————
 Prospect ————

Geology by M. E. Wilson, 1934, 1935.
 Base-map surveyed by the Topographical Survey, with aerial photography by the Royal Canadian Air Force.



Approximate magnetic declination, 12°45' West

MAP 454 A
AMULET AREA
 DUPRAT, DUFRESNOY, ROUYN, AND BEAUCHASTEL TOWNSHIPS
 ABITIBI AND TEMISCAMINGUE COUNTIES
 QUEBEC



NOT TO BE TAKEN FROM LIBRARY
 NE PAS SORTIR DE LA BIBLIOTHEQUE

- Legend**
- Road and buildings ————
 - Road (not well travelled) ————
 - Trail or wagon road ————
 - Railway ————
 - Bridge ————
 - Power line ————
 - Conveyer ————
 - Water tank ———— W.T.
 - County boundary ————
 - Township boundary ————
 - Intermittent stream ————
 - Marsh ————
 - Contours (interval 10 feet) ————
 - Height in feet ———— 1039'

Names of mines and mining properties shown thus: AMULET

454A