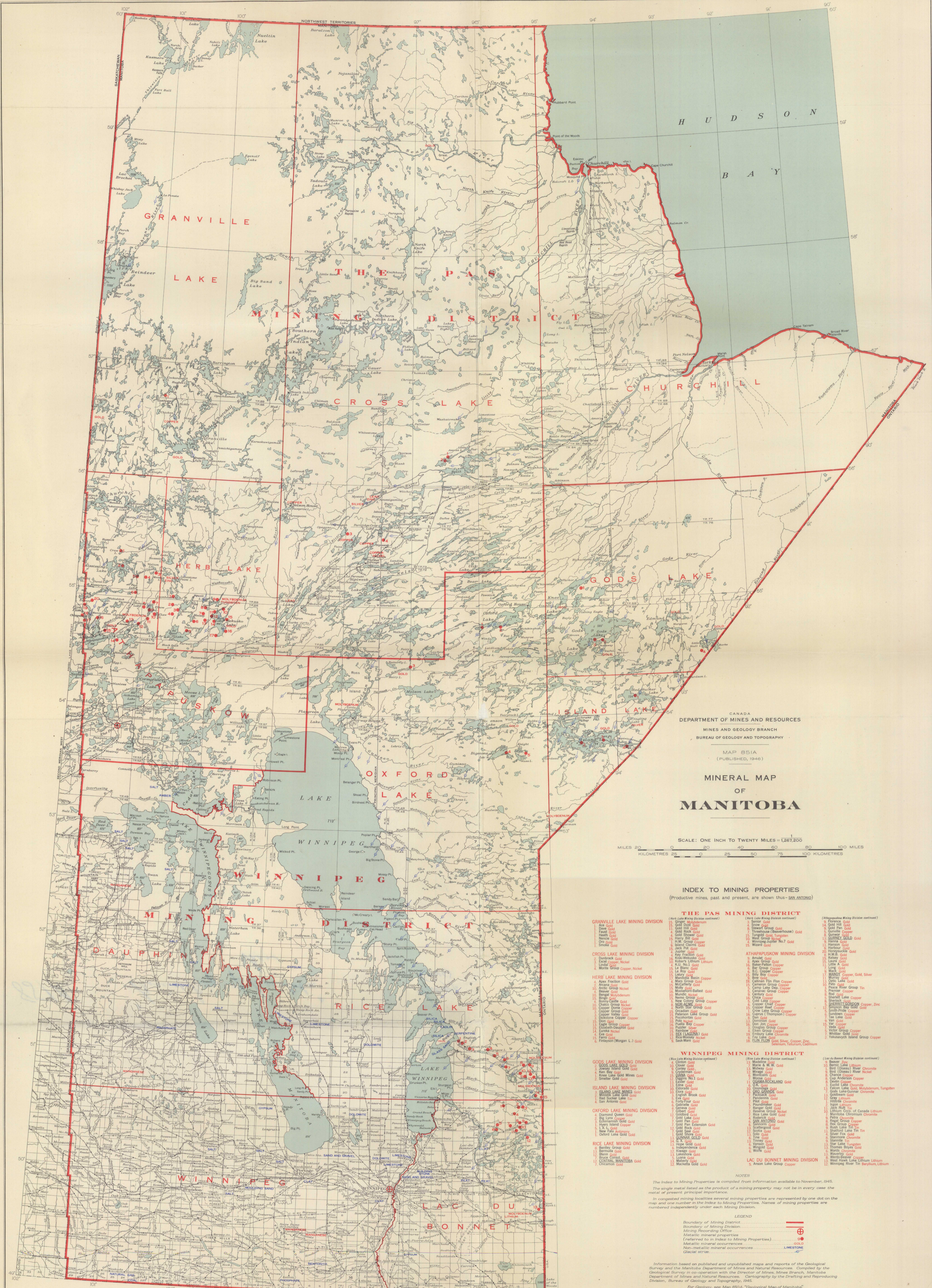


851A

NOT TO BE TAKEN FROM LIBRARY  
NE PAS SORTIR DE LA BIBLIOTHEQUE



CANADA  
DEPARTMENT OF MINES AND RESOURCES  
MINES AND GEOLOGY BRANCH  
BUREAU OF GEOLOGY AND TOPOGRAPHY

MAP 851A  
(PUBLISHED, 1946)

### MINERAL MAP OF MANITOBA

SCALE: ONE INCH TO TWENTY MILES = 1,267,200  
MILES 0 20 40 60 80 100  
KILOMETRES 0 20 40 60 80 100

#### INDEX TO MINING PROPERTIES

(Productive mines, past and present, are shown thus - SAN ANTONIO)

- |   |   |  |  |  |  |
|---|---|--|--|--|--|
| <b>GRANVILLE LAKE MINING DIVISION</b><br>(See Lake Mining Division continued)<br>1. Ash Gold<br>2. Beaver Gold<br>3. Fair Gold<br>4. Gold River Gold<br>5. Harrier Gold<br>6. Holy Spirit Gold<br>7. Jack Gold<br>8. Jasper Gold<br>9. Key Fraction Gold<br>10. Kibik Gold<br>11. Kibik Lithium<br>12. Kibik Nickel<br>13. Le Blanc Gold<br>14. Le Blanc Nickel<br>15. Manitowish Basin Copper<br>16. Marquette Gold<br>17. McCreary Gold<br>18. Monette Group Copper, Nickel | <b>CROSS LAKE MINING DIVISION</b><br>1. Apex Fraction Gold<br>2. Arctic Group Nickel<br>3. Beaver Gold<br>4. Bergam Nickel<br>5. Bergam Molybdenum<br>6. Bergam Silver<br>7. Bergam Zinc<br>8. Copper Dome Copper<br>9. Copper Group Gold<br>10. Copper Valley Gold<br>11. Dismal Copper<br>12. Dan Gold<br>13. Egan Copper<br>14. Eureka Nickel<br>15. Eve Gold<br>16. Fero Gold<br>17. Fenoyon (Morgan) L.J. Gold | <b>HERB LAKE MINING DIVISION</b><br>1. Arctic Group Nickel<br>2. Beaver Gold<br>3. Bergam Nickel<br>4. Bergam Molybdenum<br>5. Bergam Silver<br>6. Bergam Zinc<br>7. Copper Dome Copper<br>8. Copper Group Gold<br>9. Copper Valley Gold<br>10. Dismal Copper<br>11. Dan Gold<br>12. Egan Copper<br>13. Eureka Nickel<br>14. Eve Gold<br>15. Fero Gold<br>16. Fenoyon (Morgan) L.J. Gold | <b>THE PAS MINING DISTRICT</b><br>(See Lake Mining Division continued)<br>1. Snow Gold<br>2. Stewart Gold<br>3. Threshouse (Beehive) Gold<br>4. West Group Copper<br>5. Winnipeg-Archie No. 7 Gold<br>6. Wizard Gold | <b>ATHAPASKOW MINING DIVISION</b><br>(See Lake Mining Division continued)<br>1. Arctic Gold<br>2. Apex Group Gold<br>3. Baker River Copper<br>4. Le Blanc Gold<br>5. B.C. Group Copper<br>6. B.C. Copper<br>7. B.C. Copper<br>8. B.C. Copper<br>9. B.C. Copper<br>10. B.C. Copper<br>11. B.C. Copper<br>12. B.C. Copper<br>13. B.C. Copper<br>14. B.C. Copper<br>15. B.C. Copper<br>16. B.C. Copper<br>17. B.C. Copper<br>18. B.C. Copper<br>19. B.C. Copper<br>20. B.C. Copper<br>21. B.C. Copper<br>22. B.C. Copper<br>23. B.C. Copper<br>24. B.C. Copper<br>25. B.C. Copper<br>26. B.C. Copper<br>27. B.C. Copper<br>28. B.C. Copper<br>29. B.C. Copper<br>30. B.C. Copper<br>31. B.C. Copper<br>32. B.C. Copper<br>33. B.C. Copper<br>34. B.C. Copper<br>35. B.C. Copper<br>36. B.C. Copper<br>37. B.C. Copper<br>38. B.C. Copper<br>39. B.C. Copper<br>40. B.C. Copper<br>41. B.C. Copper<br>42. B.C. Copper<br>43. B.C. Copper<br>44. B.C. Copper<br>45. B.C. Copper<br>46. B.C. Copper<br>47. B.C. Copper<br>48. B.C. Copper<br>49. B.C. Copper<br>50. B.C. Copper<br>51. B.C. Copper<br>52. B.C. Copper<br>53. B.C. Copper<br>54. B.C. Copper<br>55. B.C. Copper<br>56. B.C. Copper<br>57. B.C. Copper<br>58. B.C. Copper<br>59. B.C. Copper<br>60. B.C. Copper<br>61. B.C. Copper<br>62. B.C. Copper<br>63. B.C. Copper<br>64. B.C. Copper<br>65. B.C. Copper<br>66. B.C. Copper<br>67. B.C. Copper<br>68. B.C. Copper<br>69. B.C. Copper<br>70. B.C. Copper<br>71. B.C. Copper<br>72. B.C. Copper<br>73. B.C. Copper<br>74. B.C. Copper<br>75. B.C. Copper<br>76. B.C. Copper<br>77. B.C. Copper<br>78. B.C. Copper<br>79. B.C. Copper<br>80. B.C. Copper<br>81. B.C. Copper<br>82. B.C. Copper<br>83. B.C. Copper<br>84. B.C. Copper<br>85. B.C. Copper<br>86. B.C. Copper<br>87. B.C. Copper<br>88. B.C. Copper<br>89. B.C. Copper<br>90. B.C. Copper<br>91. B.C. Copper<br>92. B.C. Copper<br>93. B.C. Copper<br>94. B.C. Copper<br>95. B.C. Copper<br>96. B.C. Copper<br>97. B.C. Copper<br>98. B.C. Copper<br>99. B.C. Copper<br>100. B.C. Copper | <b>ATKAPASKOW MINING DIVISION</b><br>(See Lake Mining Division continued)<br>1. Beaver Gold<br>2. Birch (Cassidy) River Chromite<br>3. Birch (Cassidy) River Chromite<br>4. Birch (Cassidy) River Chromite<br>5. Birch (Cassidy) River Chromite<br>6. Birch (Cassidy) River Chromite<br>7. Birch (Cassidy) River Chromite<br>8. Birch (Cassidy) River Chromite<br>9. Birch (Cassidy) River Chromite<br>10. Birch (Cassidy) River Chromite<br>11. Birch (Cassidy) River Chromite<br>12. Birch (Cassidy) River Chromite<br>13. Birch (Cassidy) River Chromite<br>14. Birch (Cassidy) River Chromite<br>15. Birch (Cassidy) River Chromite<br>16. Birch (Cassidy) River Chromite<br>17. Birch (Cassidy) River Chromite<br>18. Birch (Cassidy) River Chromite<br>19. Birch (Cassidy) River Chromite<br>20. Birch (Cassidy) River Chromite<br>21. Birch (Cassidy) River Chromite<br>22. Birch (Cassidy) River Chromite<br>23. Birch (Cassidy) River Chromite<br>24. Birch (Cassidy) River Chromite<br>25. Birch (Cassidy) River Chromite<br>26. Birch (Cassidy) River Chromite<br>27. Birch (Cassidy) River Chromite<br>28. Birch (Cassidy) River Chromite<br>29. Birch (Cassidy) River Chromite<br>30. Birch (Cassidy) River Chromite<br>31. Birch (Cassidy) River Chromite<br>32. Birch (Cassidy) River Chromite<br>33. Birch (Cassidy) River Chromite<br>34. Birch (Cassidy) River Chromite<br>35. Birch (Cassidy) River Chromite<br>36. Birch (Cassidy) River Chromite<br>37. Birch (Cassidy) River Chromite<br>38. Birch (Cassidy) River Chromite<br>39. Birch (Cassidy) River Chromite<br>40. Birch (Cassidy) River Chromite<br>41. Birch (Cassidy) River Chromite<br>42. Birch (Cassidy) River Chromite<br>43. Birch (Cassidy) River Chromite<br>44. Birch (Cassidy) River Chromite<br>45. Birch (Cassidy) River Chromite<br>46. Birch (Cassidy) River Chromite<br>47. Birch (Cassidy) River Chromite<br>48. Birch (Cassidy) River Chromite<br>49. Birch (Cassidy) River Chromite<br>50. Birch (Cassidy) River Chromite<br>51. Birch (Cassidy) River Chromite<br>52. Birch (Cassidy) River Chromite<br>53. Birch (Cassidy) River Chromite<br>54. Birch (Cassidy) River Chromite<br>55. Birch (Cassidy) River Chromite<br>56. Birch (Cassidy) River Chromite<br>57. Birch (Cassidy) River Chromite<br>58. Birch (Cassidy) River Chromite<br>59. Birch (Cassidy) River Chromite<br>60. Birch (Cassidy) River Chromite<br>61. Birch (Cassidy) River Chromite<br>62. Birch (Cassidy) River Chromite<br>63. Birch (Cassidy) River Chromite<br>64. Birch (Cassidy) River Chromite<br>65. Birch (Cassidy) River Chromite<br>66. Birch (Cassidy) River Chromite<br>67. Birch (Cassidy) River Chromite<br>68. Birch (Cassidy) River Chromite<br>69. Birch (Cassidy) River Chromite<br>70. Birch (Cassidy) River Chromite<br>71. Birch (Cassidy) River Chromite<br>72. Birch (Cassidy) River Chromite<br>73. Birch (Cassidy) River Chromite<br>74. Birch (Cassidy) River Chromite<br>75. Birch (Cassidy) River Chromite<br>76. Birch (Cassidy) River Chromite<br>77. Birch (Cassidy) River Chromite<br>78. Birch (Cassidy) River Chromite<br>79. Birch (Cassidy) River Chromite<br>80. Birch (Cassidy) River Chromite<br>81. Birch (Cassidy) River Chromite<br>82. Birch (Cassidy) River Chromite<br>83. Birch (Cassidy) River Chromite<br>84. Birch (Cassidy) River Chromite<br>85. Birch (Cassidy) River Chromite<br>86. Birch (Cassidy) River Chromite<br>87. Birch (Cassidy) River Chromite<br>88. Birch (Cassidy) River Chromite<br>89. Birch (Cassidy) River Chromite<br>90. Birch (Cassidy) River Chromite<br>91. Birch (Cassidy) River Chromite<br>92. Birch (Cassidy) River Chromite<br>93. Birch (Cassidy) River Chromite<br>94. Birch (Cassidy) River Chromite<br>95. Birch (Cassidy) River Chromite<br>96. Birch (Cassidy) River Chromite<br>97. Birch (Cassidy) River Chromite<br>98. Birch (Cassidy) River Chromite<br>99. Birch (Cassidy) River Chromite<br>100. Birch (Cassidy) River Chromite |
|---|---|--|--|--|--|

**WINNIPEG MINING DISTRICT**  
(See Lake Mining Division continued)  
1. Manitowish Basin Copper  
2. Marquette Gold  
3. McCreary Gold  
4. Monette Group Copper, Nickel  
5. Arctic Group Nickel  
6. Beaver Gold  
7. Bergam Nickel  
8. Bergam Molybdenum  
9. Bergam Silver  
10. Bergam Zinc  
11. Copper Dome Copper  
12. Copper Group Gold  
13. Copper Valley Gold  
14. Dismal Copper  
15. Dan Gold  
16. Egan Copper  
17. Eureka Nickel  
18. Eve Gold  
19. Fero Gold  
20. Fenoyon (Morgan) L.J. Gold

**LAC DU BONNET MINING DIVISION**  
1. Anson Lake Group Copper

**NOTES**  
The Index to Mining Properties is compiled from information available to November, 1945.  
The single metal listed as the product of a mining property may not be in every case the metal of present principal importance.  
In congested mining localities several mining properties are represented by one dot on the map and one number in the Index to Mining Properties. Names of mining properties are numbered independently under each Mining Division.

**LEGEND**  
Boundary of Mining District  
Boundary of Mining Division  
Mining Recording Office  
Metallic mineral properties  
(referred to in Index to Mining Properties)  
Metallic mineral occurrences  
Non-metallic mineral occurrences  
Geological strike

Information based on published and unpublished maps and reports of the Geological Survey and the Manitoba Department of Mines and Natural Resources. Compiled by the Geological Survey in co-operation with the Director of Mines, Mines Branch, Manitoba Department of Mines and Natural Resources. Cartography by the Drafting and Reproducing Division, Bureau of Geology and Topography, 1945.  
For Geology, see Map 880A, "Geological Map of Manitoba," scale: 1 inch to 20 miles, Geological Survey, Canada, 1946.