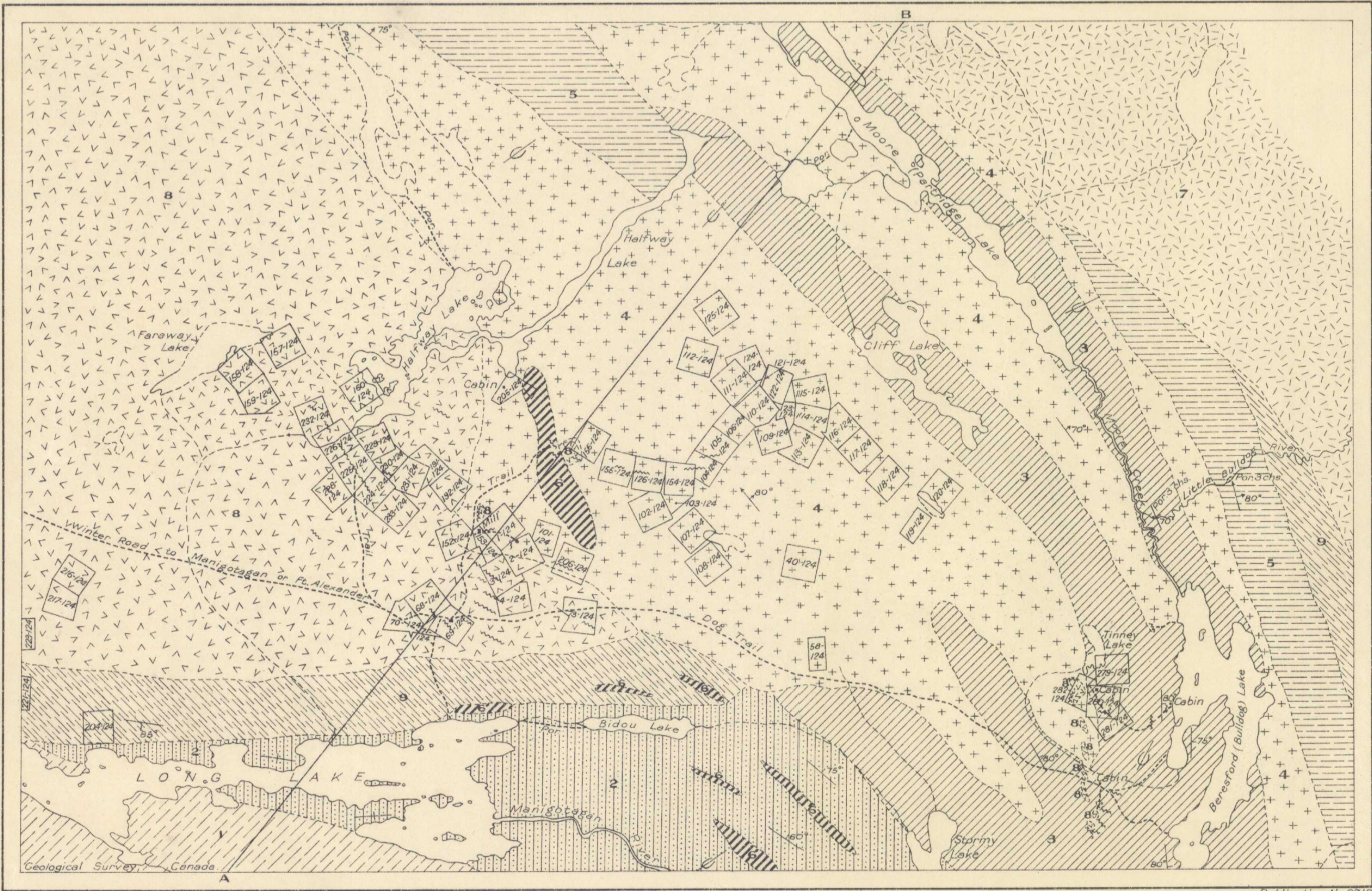
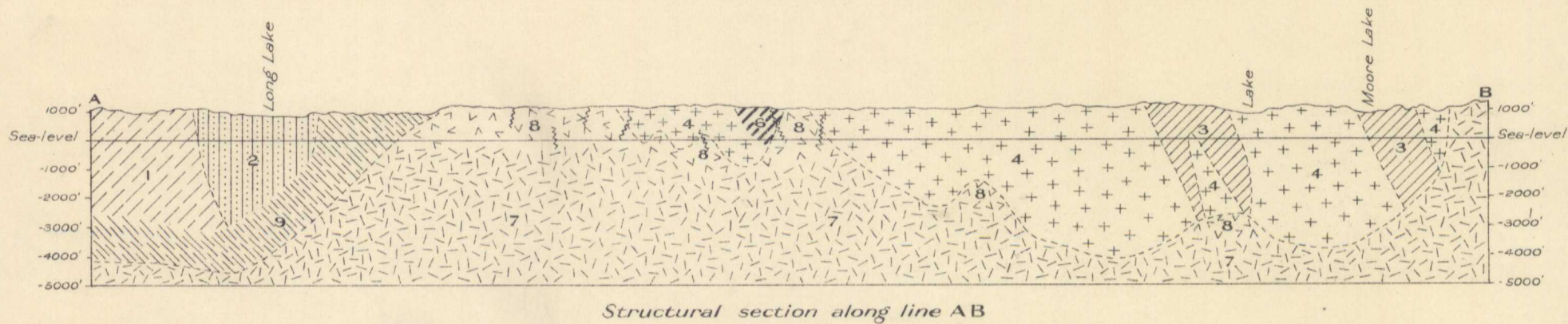


5.1.3  
A, P-D  
Beresford Lake



Legend

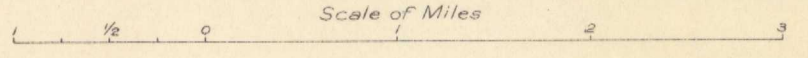
- |  |                                  |  |  |
|--|----------------------------------|--|--|
| Precambrian<br>Volcanic and Sedimentary series | Plutonic intrusives              |  | Granite and granite gneiss with many inclusions of lavas and sediments |
|  |                                  |  | Granite, granite porphyry, and granodiorite                            |
|  |                                  |  | Granite and granite gneiss   |
|  | Basic intrusives                 |  | Gabbro and amphibolite   |
|  |                                  |  | Andesite and basalt  |
|  | Lavas                            |  | Rhyolite, trachyte, dacite, and various schists                        |
|  |                                  |  | Greywacke, agglomerate, tuff, trachyte, and pillow lavas               |
|  | Sediments with interbedded lavas |  | Greywacke, quartzite, chert, and arkose, with conglomerate lenses      |
|  |                                  |  | Argillite, slate, biotite schist, garnet gneiss                        |

Symbols

- Geological boundary
- Fracture and shear zone
- Strike and dip of strata
- Vertical strata
- Strike and dip of foliation
- Glacial striae
- Mineral claim numbers

Note:- See Report for Index of surveyed mineral claims giving their lot and group numbers, and location.

Beresford Lake Area, Rice Lake Mining District, Southeast Manitoba.



To accompany report by J.F. Wright, in Summary Report, Part B, 1925.

Publication No. 2012