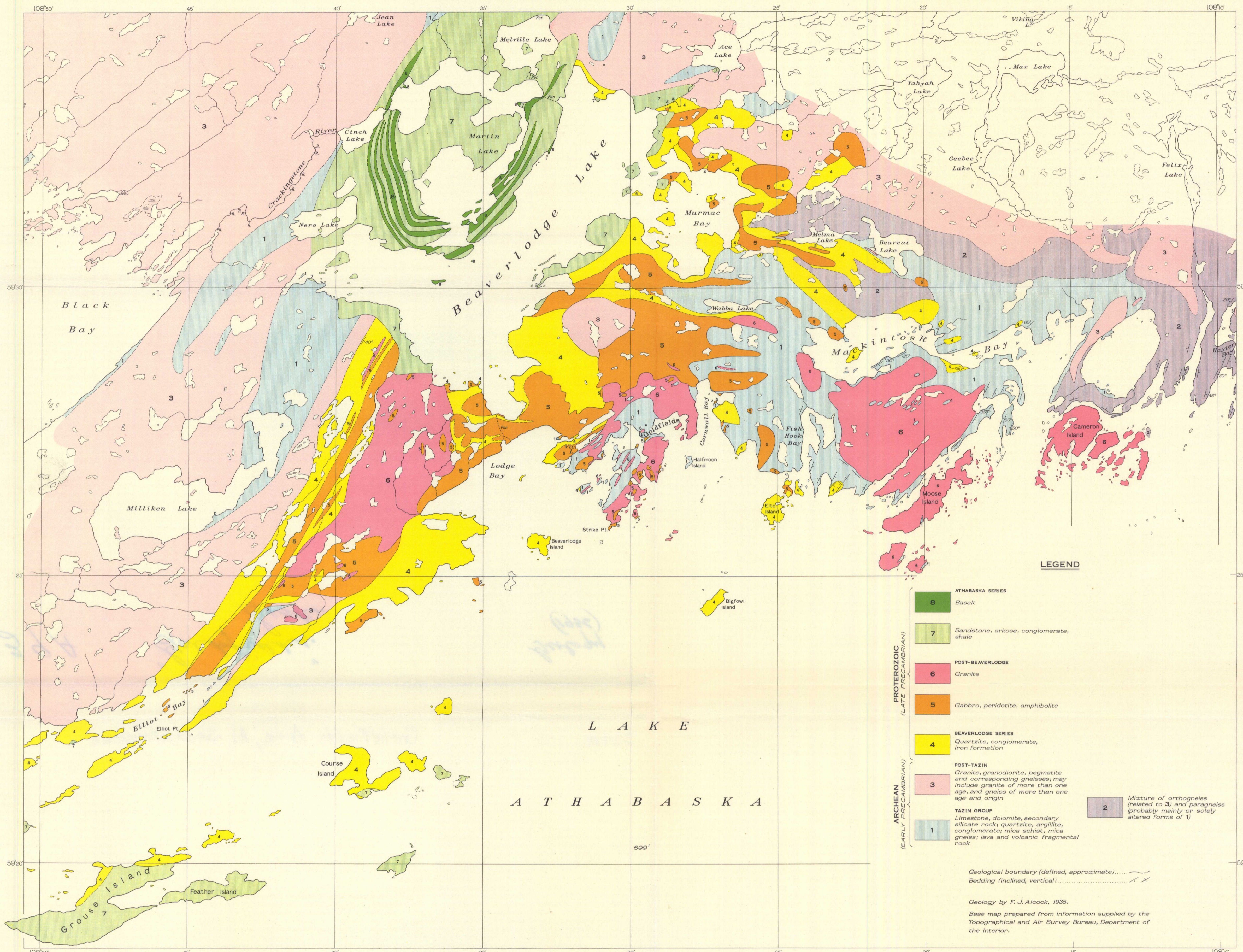


Issued 1936



LEGEND

- |                                   |   |   |
|-----------------------------------|---|---|
| PROTEROZOIC<br>(LATE PRECAMBRIAN) | 8 | ATHABASKA SERIES<br>Basalt  |
|                                   | 7 | Sandstone, arkose, conglomerate, shale  |
|                                   | 6 | POST-BEAVERLODGE<br>Granite   |
|                                   | 5 | Gabbro, peridotite, amphibolite   |
| ARCHEAN<br>(EARLY PRECAMBRIAN)    | 4 | BEAVERLODGE SERIES<br>Quartzite, conglomerate, iron formation   |
|                                   | 3 | POST-TAZIN<br>Granite, granodiorite, pegmatite and corresponding gneisses; may include granite of more than one age, and gneiss of more than one age and origin |
|                                   | 1 | TAZIN GROUP<br>Limestone, dolomite, secondary silicate rock; quartzite, argillite, conglomerate; mica schist, mica gneiss; lava and volcanic fragmental rock    |
|                                   | 2 | Mixture of orthogneiss (related to 3) and paragneiss (probably mainly or solely altered forms of 1)   |

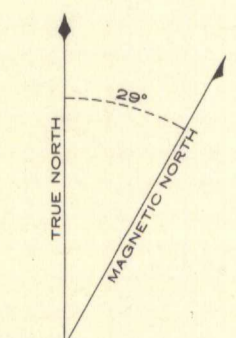
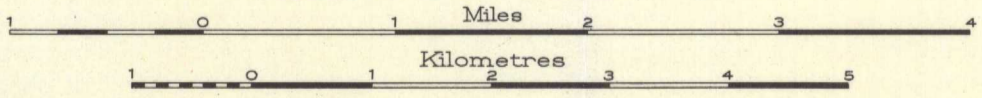
Geological boundary (defined, approximate) .....  
 Bedding (inclined, vertical) .....

Geology by F. J. Alcock, 1935.  
 Base map prepared from information supplied by the Topographical and Air Survey Bureau, Department of the Interior.

MAP 339A

**GOLDFIELDS AREA**  
 NORTHERN SASKATCHEWAN

Scale, 63,360 or 1 inch to 1 Mile



Approximate magnetic declination, 29° East.



Scale, 1 Inch to 200 miles

NOT TO BE TAKEN FROM LIBRARY  
 NE PAS SORTIR DE LA BIBLIOTHÈQUE

339A