

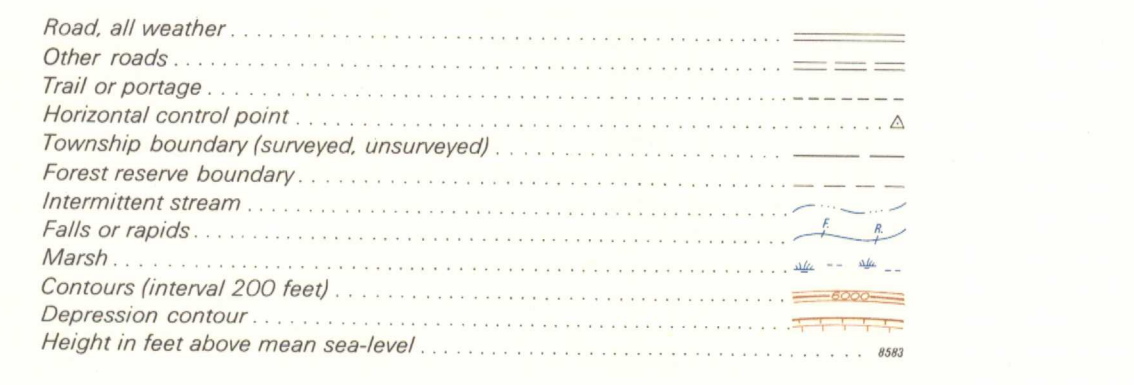
LEGEND

CENOZOIC	
TERTIARY PALEOCENE	
18	Sandstone, shale, minor conglomerate and coal seams (non-marine)
LATE UPPER CRETACEOUS AND TERTIARY	
Paleocene and Brazeau Formation undivided: sandstone, shale, conglomerate, coal seams (non-marine)	
17	
LATE UPPER CRETACEOUS	
16	BRAZEAU FORMATION: sandstone, shale, conglomerate; minor coal seams and ash beds; (non-marine)
UPPER CRETACEOUS	
15	WAPIABI FORMATION: shale, sandy shale; minor sandstone and ironstone; (marine)
14	CARDIUM FORMATION: sandstone, conglomerate, shale; 14a, includes Bad Heart and Muskiki formations (marine and non-marine)
13	KASKAPAU FORMATION: shale, sandy shale; minor ironstone and sandstone (marine)
12	DUNVEGAN FORMATION: sandstone, sandy shale (marine and non-marine)
MESOZOIC	
LOWER CRETACEOUS	
FORT ST. JOHN GROUP	
11	Shale, silt shale, minor sandstone (marine)
10	LUSCAR FORMATION: sandstone, shale, carbonaceous shale, conglomerate, coal seams (non-marine and brackish-water)
9	CADOMIN FORMATION: conglomerate, minor sandstone (non-marine)
LOWER CRETACEOUS AND UPPER JURASSIC	
8	NIKANASSIN FORMATION: sandstone, sandy shale, carbonaceous shale, coal veinlets (marine and non-marine)
JURASSIC	
FERNIE GROUP	
7	Shale, siltstone, sandstone, minor ironstone and black limestone (marine)
TRIASSIC	
6	WHITEHORSE FORMATION: limestone, sandy limestone, sandy dolomite, argillaceous limestone and dolomite (marine) SULPHUR MOUNTAIN FORMATION: shale, siltstone, sandstone; minor dolomitic and calcareous sandstone; a few thin dolomite beds (marine)
LATE PALAEZOZOIC	
5	ROCKY MOUNTAIN FORMATION: sandstone, chert, minor dolomite; phosphatic conglomerate (marine) (appears on Sheet 1 only)
MISSISSIPPIAN	
RUNDLE GROUP	
4	Limestone and dolomite; minor calcareous shale and small chert masses (marine)
3	BANFF FORMATION: limestone, argillaceous limestone, calcareous shale; black shale unit at base (marine)
DEVONIAN	
2	Undivided: limestone, dolomite, argillaceous limestone, calcareous shale, sandy dolomite, minor small chert masses (marine)
CAMBRIAN (?)	
1	Sandstone, conglomerate (marine) (appears on Sheet 1 only)



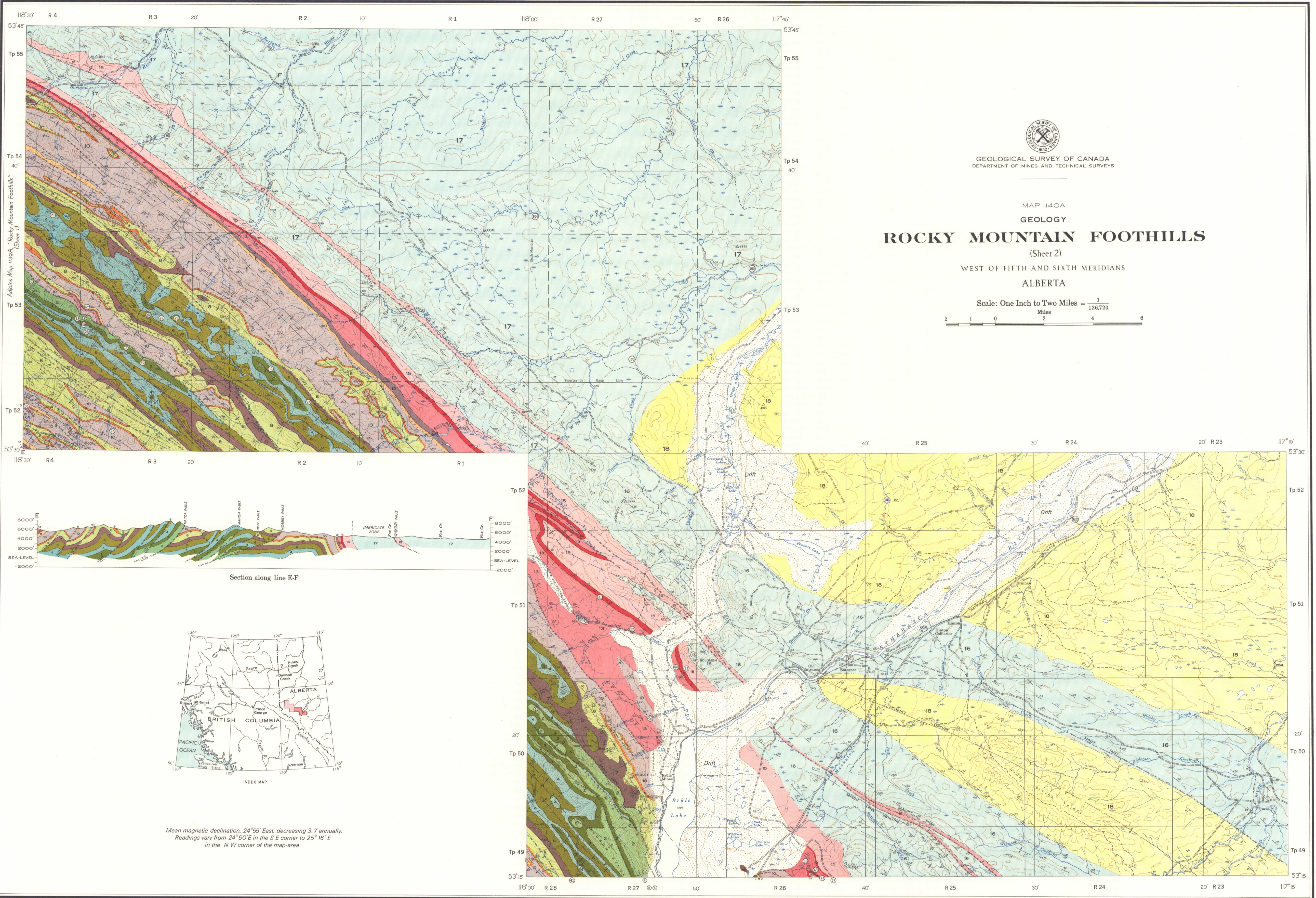
Compiled by E. J. W. Irish from published geological maps by J. K. Eccles, E. J. W. Irish, A. H. Lang, and R. Thorsteinsson, 1943-1962

To accompany G. S. C. Memoir 334 by E. J. W. Irish



Cartography by the Geological Survey of Canada, 1964

Base-map compiled from published maps of the Surveys and Mapping Branch



GEOLOGICAL SURVEY OF CANADA
DEPARTMENT OF MINES AND TECHNICAL SURVEYS

MAP 1140A
GEOLOGY
ROCKY MOUNTAIN FOOTHILLS
(Sheet 2)
WEST OF FIFTH AND SIXTH MERIDIANS
ALBERTA

Scale: One Inch to Two Miles = 1/126,720

PUBLISHED, 1965
COPIES OF THIS MAP MAY BE OBTAINED FROM THE DIRECTOR, GEOLOGICAL SURVEY OF CANADA, OTTAWA

NOT TO BE TAKEN FROM LIBRARY
NE PAS SORTIR DE LA BIBLIOTHEQUE

G3410 C5
1910-
G4
0mmc



1140A