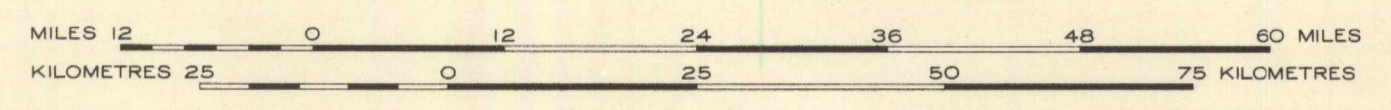


GEOLOGICAL MAP OF SOUTHERN SASKATCHEWAN

SHOWING LIGNITE OCCURRENCES AND LOCATION OF COAL MINES

Prepared by B. R. MacKay, Geological Survey, 1947.

SCALE: ONE INCH TO TWELVE MILES = 760,320

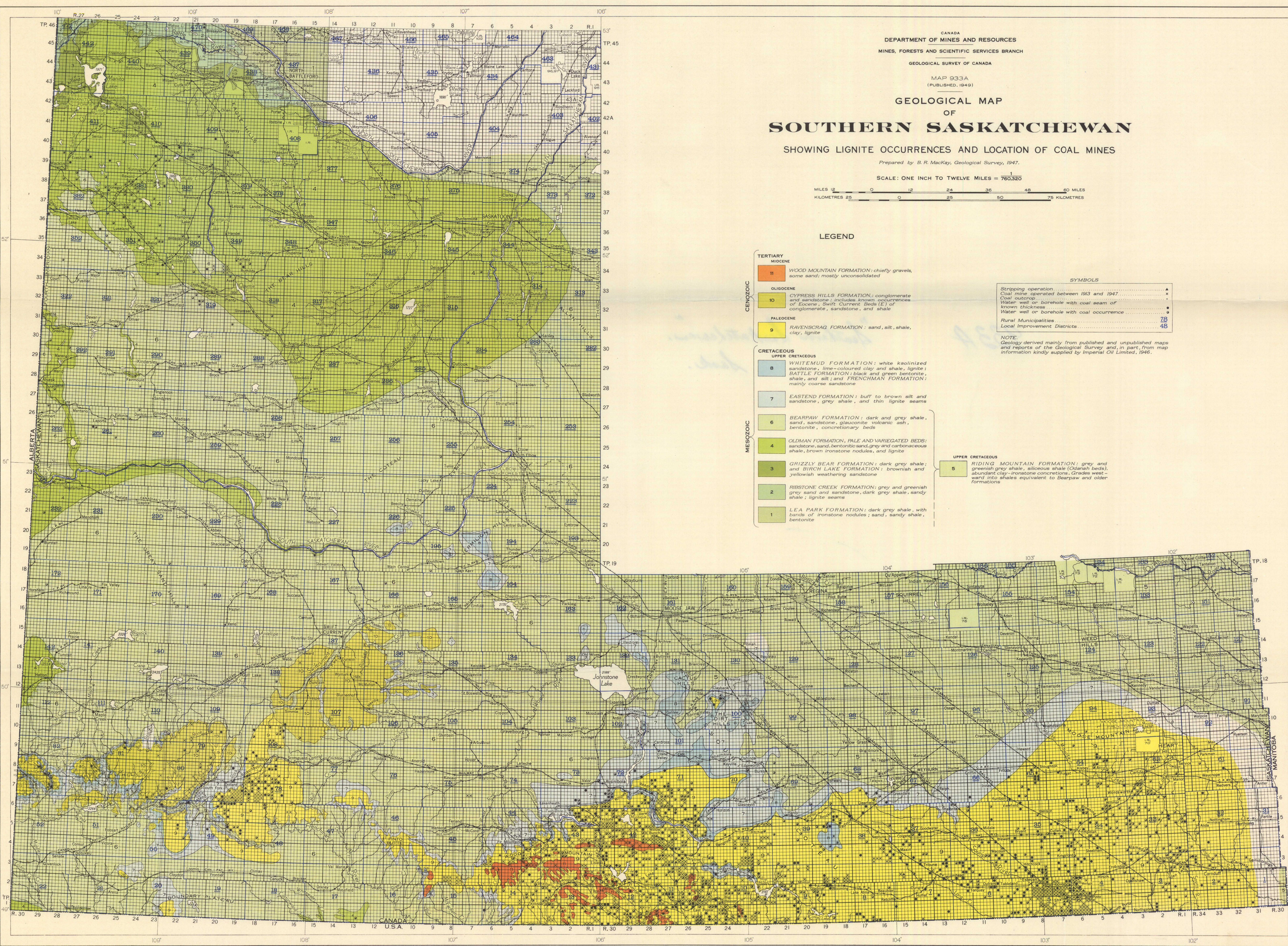


LEGEND

- TERTIARY**
- MIOCENE**
- 11 WOOD MOUNTAIN FORMATION: chiefly gravels, some sand; mostly unconsolidated
- OLIGOCENE**
- 10 CYPRESS HILLS FORMATION: conglomerate and sandstone; includes known occurrences of Eocene, Swift Current Beds (E) of conglomerate, sandstone, and shale
- PALEOCENE**
- 9 RAVENSCRAIG FORMATION: sand, silt, shale, clay, lignite
- CRETACEOUS**
- UPPER CRETACEOUS**
- 8 WHITEMUD FORMATION: white kaolinized sandstone, lime-coloured clay and shale, lignite; BATTLE FORMATION: black and green bentonite, shale, and silt; and FRENCHMAN FORMATION: mainly coarse sandstone
 - 7 EASTEND FORMATION: buff to brown silt and sandstone, grey shale, and thin lignite seams
- MESOZOIC**
- 6 BEARPAW FORMATION: dark and grey shale, sand, sandstone, glauconite volcanic ash, bentonite, concretionary beds
 - 4 OLDMAN FORMATION, PALE AND VARIEGATED BEDS: sandstone, sand, bentonite sand, grey and carbonaceous shale, brown ironstone nodules, and lignite
 - 3 GRIZZLY BEAR FORMATION: dark grey shale; and BIRCH LAKE FORMATION: brownish and yellowish weathering sandstone
 - 2 RIBSTONE CREEK FORMATION: grey and greenish grey sand and sandstone, dark grey shale, sandy shale; lignite seams
 - 1 LEA PARK FORMATION: dark grey shale, with bands of ironstone nodules; sand, sandy shale, bentonite

- SYMBOLS**
- ▲ Stripping operation
 - ✱ Coal mine operated between 1913 and 1947
 - Water well or borehole with coal seam of known thickness
 - Water well or borehole with coal occurrence
 - ▭ Rural Municipalities 75
 - ▭ Local Improvement Districts 48

NOTE: Geology derived mainly from published and unpublished maps and reports of the Geological Survey and, in part, from map information kindly supplied by Imperial Oil Limited, 1946.



NOT TO BE TAKEN FROM LIBRARY
NE PAS SORTIR DE LA BIBLIOTHÈQUE

