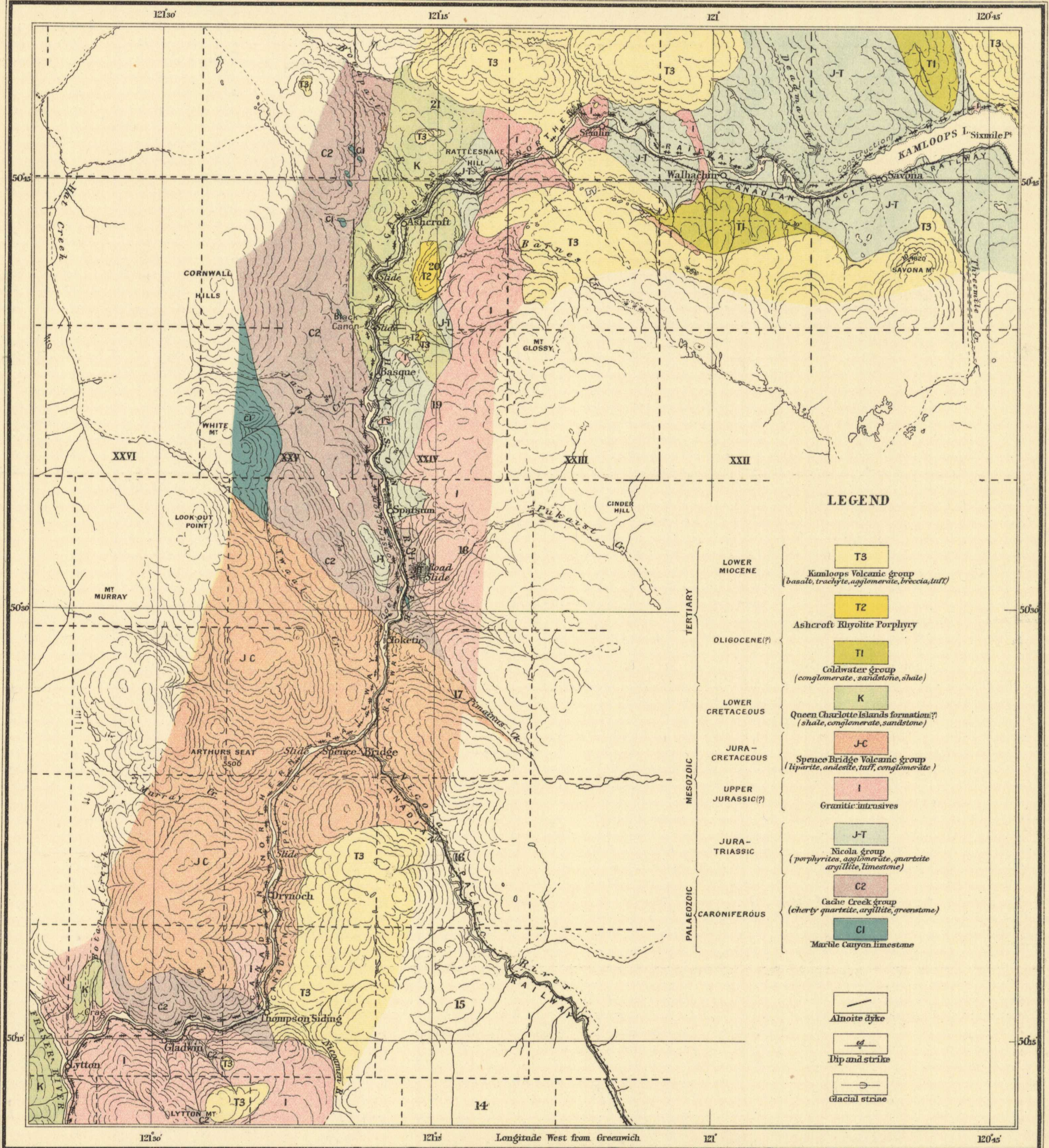


GEOLOGY

OUTLINE MAP



LEGEND

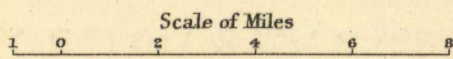
TERTIARY	LOWER MIOCENE	T3 Kamloops Volcanic group (basalt, trachyte, agglomerate, breccia, tuff)
	OLIGOCENE(?)	T2 Ashcroft Rhyolite Porphyry
		T1 Coldwater group (conglomerate, sandstone, shale)
MESOZOIC	LOWER CRETACEOUS	K Queen Charlotte Islands formation? (shale, conglomerate, sandstone)
	JURA-CRETACEOUS	J-C Spence Bridge Volcanic group (trachyte, andesite, tuff, conglomerate)
	UPPER JURASSIC(?)	I Granitic intrusives
	JURA-TRIASSIC	J-T Nicola group (porphyrites, agglomerate, quartzite, argillite, limestone)
PALAEOZOIC	CARONIFEROUS	C2 Cacho Creek group (cherty quartzite, argillite, greenstone)
		C1 Marble Canyon limestone

- Alnoite dyke
- Dip and strike
- glacial striae

C.O. Senécal, Geographer and Chief Draughtsman.

MAP 104A
 (Issued 1913)

THOMPSON RIVER VALLEY BELOW KAMLOOPS LAKE, BRITISH COLUMBIA



To accompany Summary Report by C.W. Drysdale 1912.

NOT TO BE TAKEN FROM LIBRARY
 NE PAS SORTIR DE LA BIBLIOTHÈQUE



104A