



LEGEND

- CENOZOIC**
- QUATERNARY**
PLEISTOCENE AND RECENT
- 8 Sand, gravel, clay, alluvium
- CRETACEOUS OR LATER**
UPPER CRETACEOUS OR LATER
COAST INTRUSIONS
- 7 Undifferentiated: granodiorite, diorite, quartz diorite, quartz monzonite, adamellite, granite, gabbro
Border Facies: 7a, hornblende and hornblende-biotite granodiorite; 7b, hornblende diorite, quartz diorite, migmatite
Inner Facies: 7c, white granodiorite; 7d, green granodiorite; 7e, pink granodiorite
Pyroxene Quartz Diorite Facies: 7f, border phase; fine-grained, non-porphyrific, pyroxene quartz diorite; 7g, coarse-grained, non-porphyrific phase; pyroxene granodiorite 7h, porphyritic phase; pyroxene granodiorite and adamellite; 7i, central phase; adamellite and granophyre
Gabbro Facies: 7j, olivine gabbro, pyroxene gabbro diorite
- JURASSIC AND (?) CRETACEOUS**
UPPER JURASSIC AND (?) LOWER CRETACEOUS
BOWSER GROUP
- 6 Greywacke, conglomerate, argillite, minor tuff
- JURASSIC**
LOWER (?) AND MIDDLE JURASSIC
HAZELTON GROUP
- 5 Andesite, basalt, rhyolite, dacite
- 4 Andesite, breccia, tuff, greywacke, argillite
- TRIASSIC (?)**
- 3 Limestone-boulder conglomerate, greywacke, banded volcanic sandstone, chert
- CARBONIFEROUS AND PERMIAN**
- 2 White crystalline limestone
- 1 Greenstone, shale, argillaceous limestone, limestone

- Bedding (inclined, vertical)
- Schistosity (inclined, dip unknown)
- Fault (defined, approximate)
- Anticline (defined, approximate)
- Syncline (defined, approximate)
- Glacial striae
- Fossil locality (leaves, shells)
- Mineral property

Geology by S. Duffell and J.G. Souther, 1953, 1954 and 1955

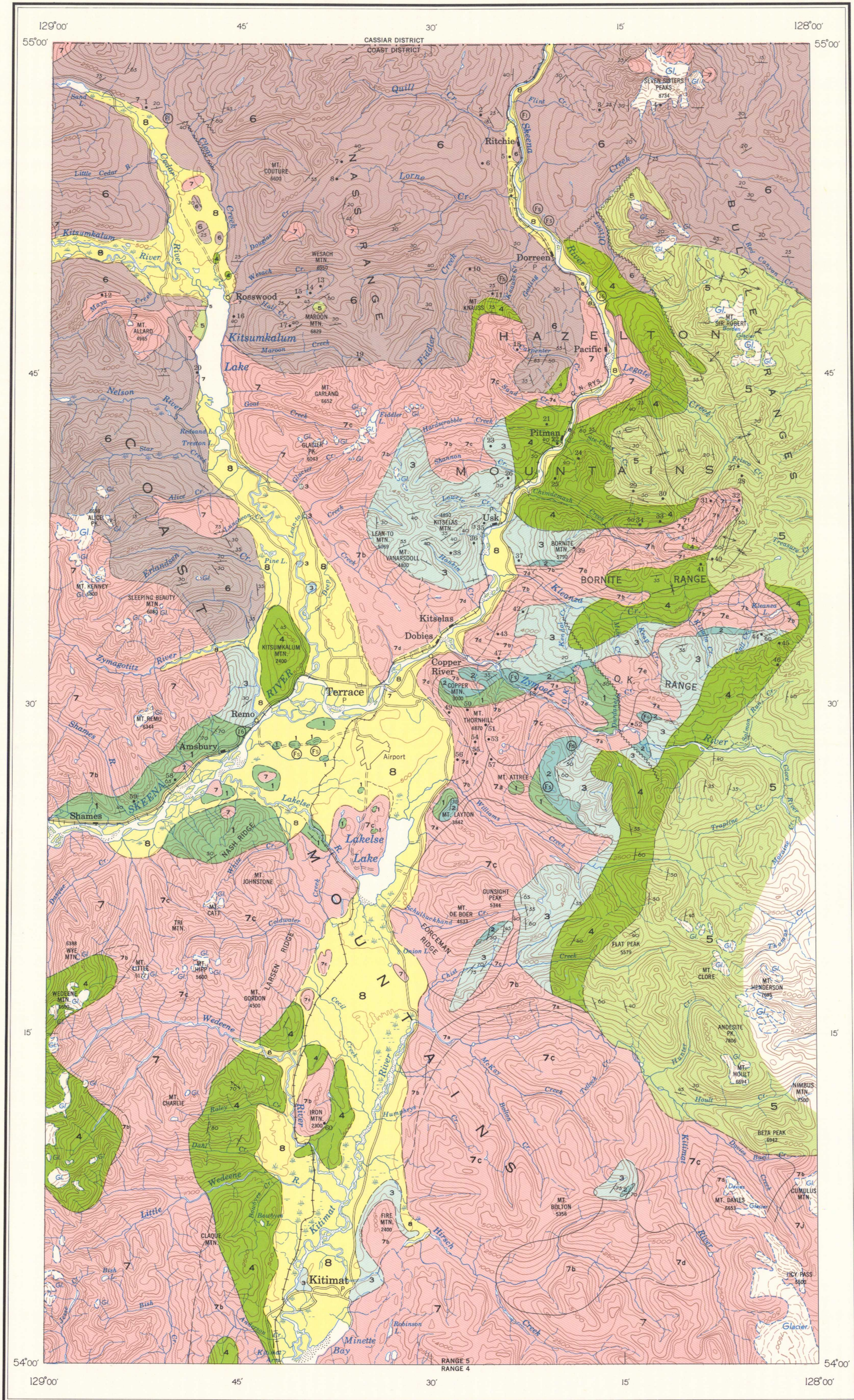
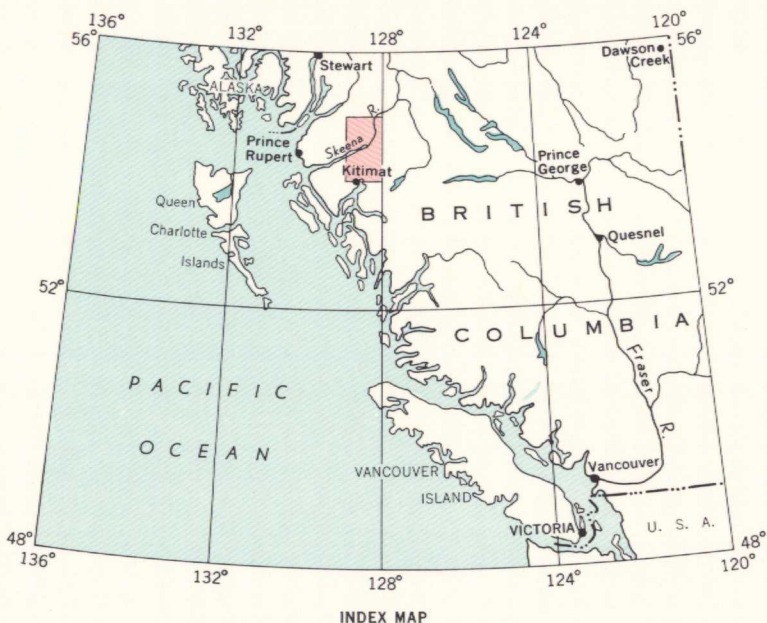
To accompany G.S.C. Memoir 329 by S. Duffell and J.G. Souther.

- Road, all weather
- Other roads
- Trail
- Post Office
- District boundary
- Intermittent streams and lakes
- Marsh
- Sand
- Contours (interval 500 feet)
- Height in feet above mean sea-level

Cartography by the Geological Survey of Canada, 1963

Base-map by the Surveys and Mapping Branch.
Revisions by the Geological Survey of Canada

Mean magnetic declination, 26° 56' West, decreasing 3.3' annually. Readings vary from 26° 30' in the SE corner to 27° 17' in the NW corner of the map-area.



- INDEX TO MINING PROPERTIES**
- Silver Plate and Silver Cup group
 - Windfall group
 - Seven Sisters group (D and W)
 - Caledonia group
 - Buccaneer of the North group
 - Canadian Swede group
 - September group
 - July group
 - Dry Hill Placer group
 - Patmore group
 - Dorreen Gold Mine
 - Martin group
 - Guld claim
 - Bear claim
 - Black Wolf claim
 - Belway and Rex group
 - Motherlode claim
 - Gold Dome group
 - Keystone and Lucy O'Neil claims
 - Portland claims
 - Grotto group
 - Diorite group
 - A-B group
 - Bradle Bane group
 - St. Elmo group
 - Nicholson Creek Mining Corporation
 - Frisco group
 - M and K group
 - Shenandoah group
 - United Ste-Croix group
 - Zona May group
 - M and M claims
 - Galena group
 - Silver Mitts group
 - Cordillera group
 - Lucky Luke group
 - Independence group
 - Nugget group
 - Singlehurst claim
 - Silver Crown group
 - Silver Basin group
 - Columario Consolidated Gold Mines Ltd.
 - Silver Bow and Silver Cliff groups
 - Avon group
 - Wells group
 - Montana group
 - Zymoetz group
 - Providence group
 - Globe claim
 - La Libertad claim
 - Ptarmigan claim
 - Dardanelle group-Omineca Gold Quartz
 - St. Paul and X claim
 - A-claim
 - B-claim
 - Coin claim
 - Eureka claim
 - Autumn group
 - A. E. Barr-Limestone quarry
 - Iron Mountain magnetite deposit

PUBLISHED, 1964
COPIES OF THIS MAP MAY BE OBTAINED FROM THE
DIRECTOR, GEOLOGICAL SURVEY OF CANADA, OTTAWA

MAP 1136A
GEOLOGY
TERRACE
BRITISH COLUMBIA

Scale: One Inch to Four Miles = $\frac{1}{253,440}$
Miles

4 2 0 4 8 12

G3401-5
1910-
54
ommc-
1136A
C.R.