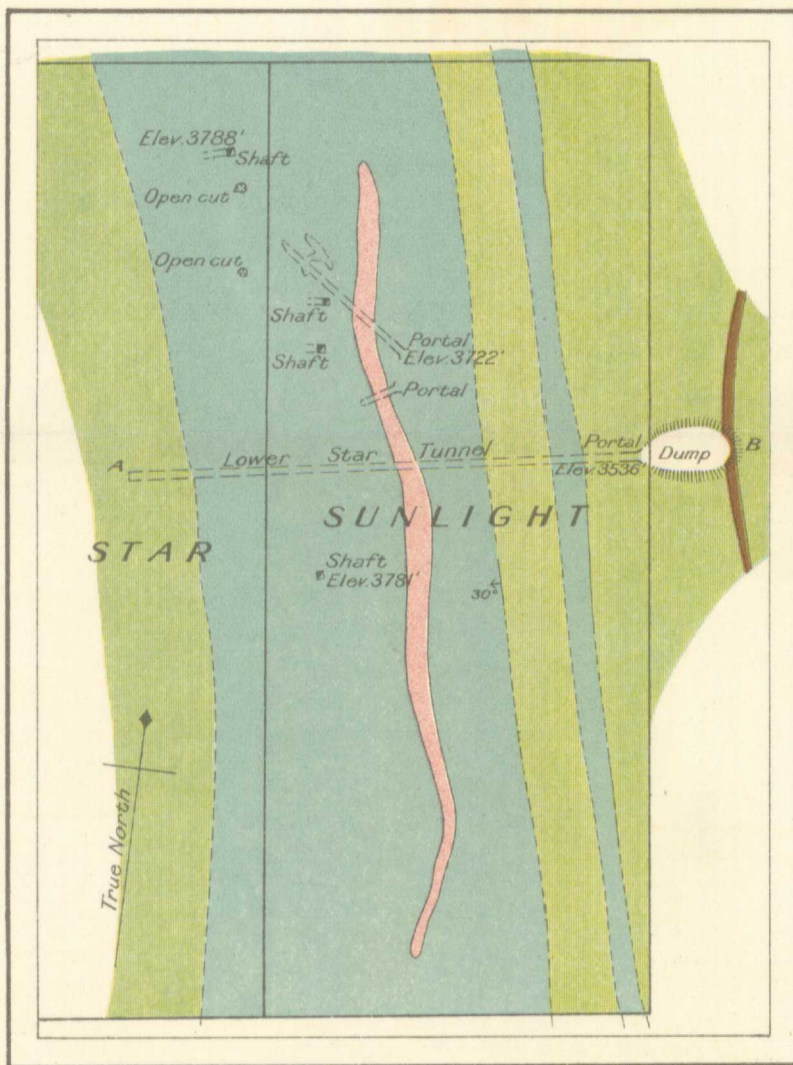







Section along *Lower Star Tunnel*
Vertical and Horizontal Scale, 300 feet to 1 inch



- Legend**
-  Lamprophyre dyke
 -  Gneissic granite
 -  Limestone
 -  Stauriolite schist
 -  Underground workings

Geological Survey, Canada.

Publication N°1787

Diagram showing geology of the *Sunlight* and part of the *Star* mineral claims, *Ainsworth Mining Camp*, *Kootenay District*, *British Columbia*.

Scale, 300 feet to 1 inch

