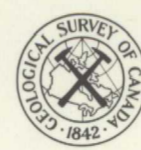


REF. or DRAWING No.

DETAILS



GEOLOGICAL SURVEY OF CANADA  
DEPARTMENT OF MINES AND TECHNICAL SURVEYS

SHEET 93 E

GEOLOGICAL SERIES

LEGEND

- QUATERNARY**  
PLEISTOCENE AND RECENT
- 15 Till, gravel, sand, clay, alluvium
- TERTIARY**  
OLIGOCENE OR LATER
- 14 Basalt, tuff
- 13 Gabbro
- CRETACEOUS TO OLIGOCENE**  
UPPER CRETACEOUS TO OLIGOCENE  
OOTSJA LAKE GROUP
- 12 Rhyolite, dacite, andesite, basalt, associated tuffs and breccias; minor conglomerate
- CRETACEOUS**  
LOWER CRETACEOUS
- 11 Argillite, arkose, breccia, tuff, andesite, basalt
- JURASSIC (?) AND LATER**  
UPPER JURASSIC (?) AND LATER  
COAST INTRUSIONS
- 10 MOUNT BOLOM STOCK: granite, in part porphyritic
- 9 SWING PEAK STOCK: fine-grained porphyritic diorite
- 8 Granodiorite, quartz diorite, diorite, granite
- 7 QUANCHUS INTRUSIONS: granite, quartz monzonite, quartz diorite
- 6 Red granite
- 5 Red syenite, granite, monzonite
- 4 Diorite
- 3 Gabbro
- JURASSIC**  
MIDDLE JURASSIC (Mainly)
- 2 HAZELTON GROUP  
Breccia, tuff, andesite, dacite, rhyolite, basalt, argillite, greywacke, chert, conglomerate, minor limestone.  
May include some undifferentiated 1 and 11
- TRIASSIC AND JURASSIC**  
UPPER TRIASSIC AND LOWER JURASSIC  
TAKLA GROUP
- 1 Breccia, tuff, andesite, minor argillite, and limestone
- A Metamorphic rocks, greenstone, amphibolite, phyllite, schist, gneiss, crystalline limestone, undifferentiated minor diorite and granite, Mesozoic and (?) Palaeozoic

NOTE: Age of 3 to 8 relative to 2 uncertain; 9, 10 younger than 2; sequence of Coast intrusions uncertain

- Bedding (inclined, vertical) ..... XX
- Fault (defined, approximate, assumed) ..... ~~~~~
- Anticlinal axis ..... ———
- Synclinal axis ..... ———
- Glacial striae ..... ———
- Drift ridges ..... ———
- Fossil locality ..... (C)
- Mining property ..... 20

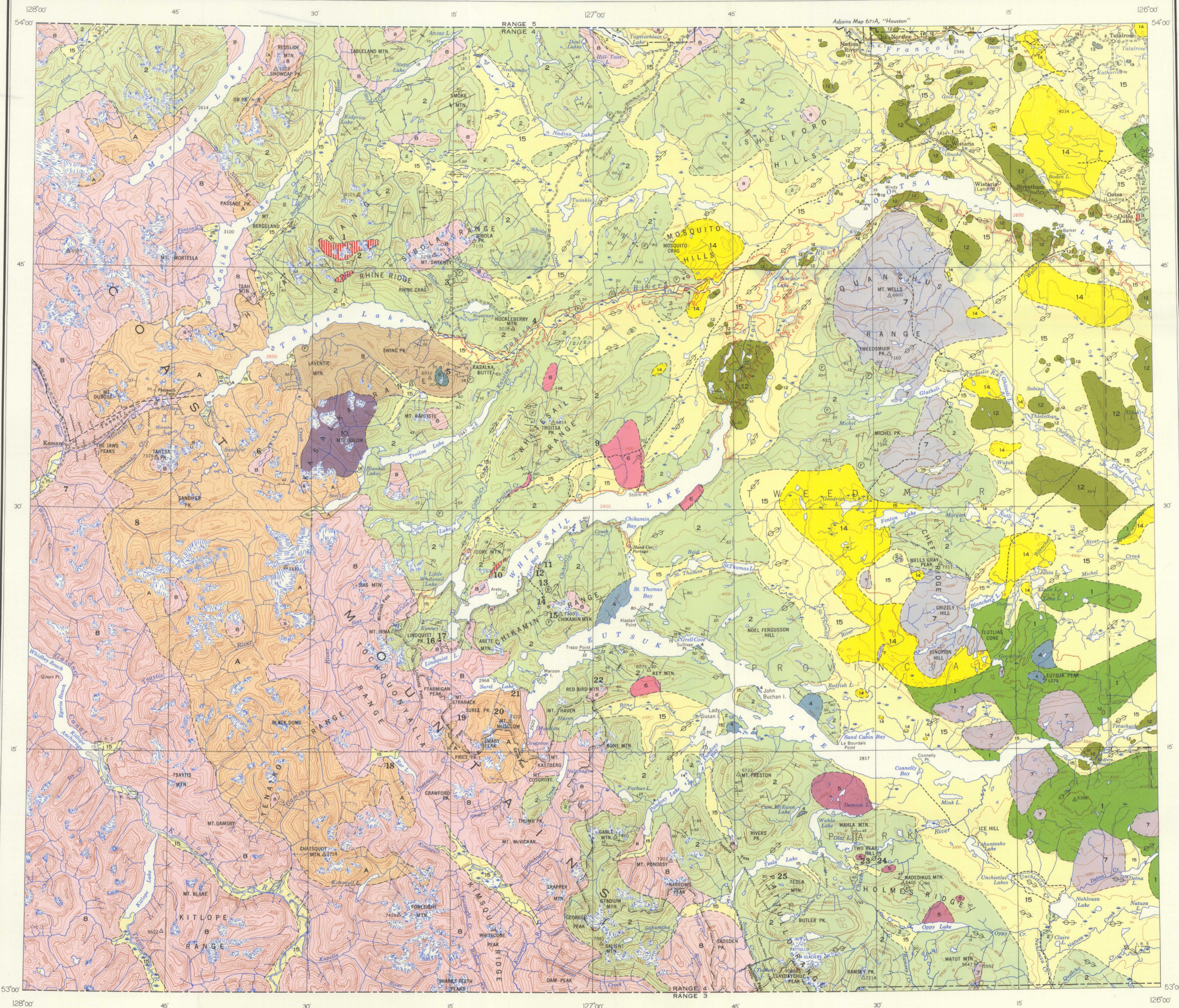
INDEX TO MINING PROPERTIES AND MINERAL OCCURRENCES

- 1 Lead Empire group ..... Lead, zinc
- 2 Tahtsa Range occurrence ..... Lead, zinc
- 3 Emerald Glacier group ..... Zinc, lead, silver
- 4 Riverside group ..... Gold
- 5 Captain group ..... Lead, zinc, silver
- 6 Sandifer Lake occurrence ..... Copper
- 7 Pintledanne group (position approximate) ..... Copper
- 8 Smith-Nash group (position approximate) ..... Gold
- 9 Whitesail Range occurrence ..... Gold
- 10 Core group ..... Gold
- 11 Mentor group ..... Zinc, lead, gold, silver
- 12 Dads Special ..... Zinc, lead
- 13 Roosevelt group ..... Zinc, lead, silver, gold
- 14 Garner No. 1 and Marie group ..... Lead, zinc, silver, gold
- 15 Rainy and Gold Coin group ..... Lead, zinc, silver, gold
- 16 Lam and Old Timer groups ..... Gold, silver
- 17 Deer Horn mine ..... Gold, silver, tungsten
- 18 Ear Lake occurrence ..... Gold, silver, copper
- 19 Sural Pass occurrence ..... Copper
- 20 Sural occurrence ..... Lead, zinc, molybdenum
- 21 Sural Lake group ..... Copper
- 22 Red Bird Mountain occurrence ..... Copper
- 23 Two Bear Hill occurrence ..... Copper
- 24 Cheko River occurrence ..... Copper
- 25 Tesla Mountain occurrence ..... Copper

Geology by S. Duffell, 1947-52  
Cartography by the Geological Cartography Unit, 1958

Base-map prepared by Army Survey Establishment,  
R. C. E., Department of National Defence.  
Revision supplied by Department of Lands  
and Forests, British Columbia, 1958

Approximate magnetic declination, 26°42' East



PUBLISHED, 1959  
COPIES OF THIS MAP MAY BE OBTAINED FROM THE  
DIRECTOR, GEOLOGICAL SURVEY OF CANADA, OTTAWA



MAP 1064A  
**WHITESAIL LAKE**  
COAST DISTRICT  
BRITISH COLUMBIA

Scale: One Inch to Four Miles = 1/253,440  
Miles 4 2 0 2 4 8 12

Air photographs covering this map-area may be  
obtained through the National Air Photographic  
Library, Topographical Survey, Ottawa, Ontario

NOT TO BE TAKEN FROM LIBRARY  
NE PAS SORTIR DE LA BIBLIOTHÈQUE



- REFERENCE
- Main road ..... ———
- Other roads ..... - - - - -
- Trail ..... - - - - -
- Power transmission line ..... ———
- Building or cabin ..... (C)
- Post Office ..... (P)
- Horizontal control point ..... (H)
- Range boundary ..... ———
- Provincial park boundary ..... ———
- Indian Reserve boundary ..... ———
- Present shoreline above Kenney Dam ..... ———
- Marsh ..... (M)
- Sand or gravel ..... (S)
- Glacier ..... (G)
- Contours (interval 500 feet) ..... (C)
- Height in feet above mean sea-level ..... 9085

1064A

MADE IN BRITAIN  
ARGLIGHT  
VERTICAL FILING SYSTEMS.  
Moisten the full length of gummed edges,  
place tracing squarely on lower half, and  
press strip down firmly.  
STRIP REF. No. 5703/028

B.C.

1064-A