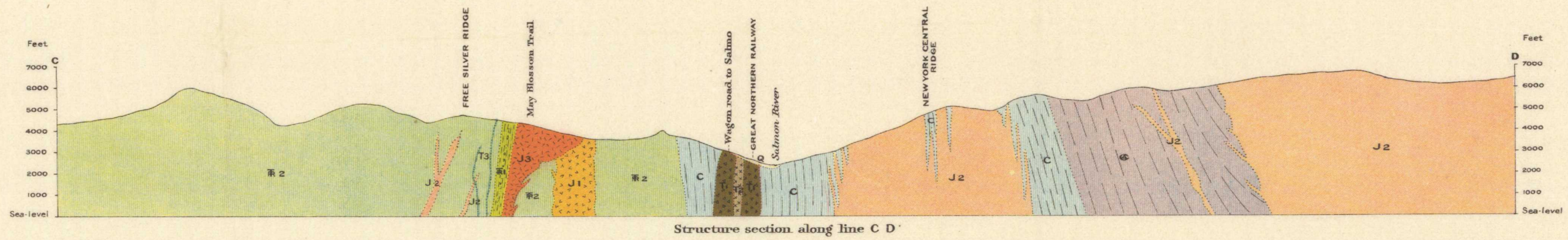
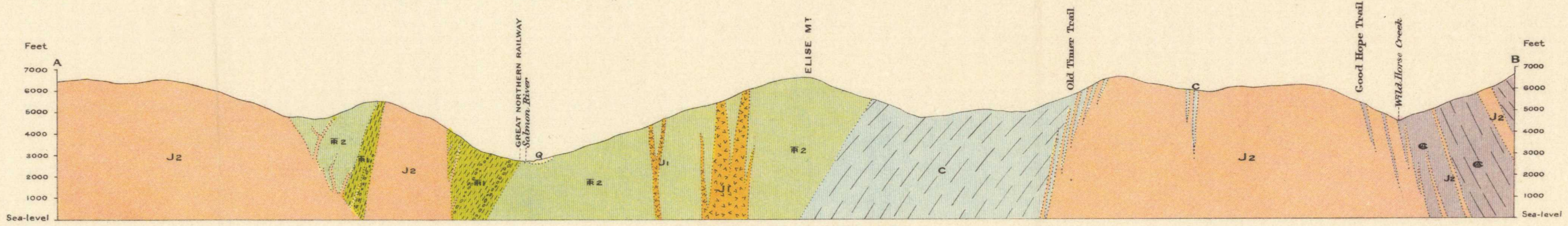


Canada  
Department of Mines

HON. P. E. BLONDIN, MINISTER; R. G. M. CONNELL, DEPUTY MINISTER.

GEOLOGICAL SURVEY

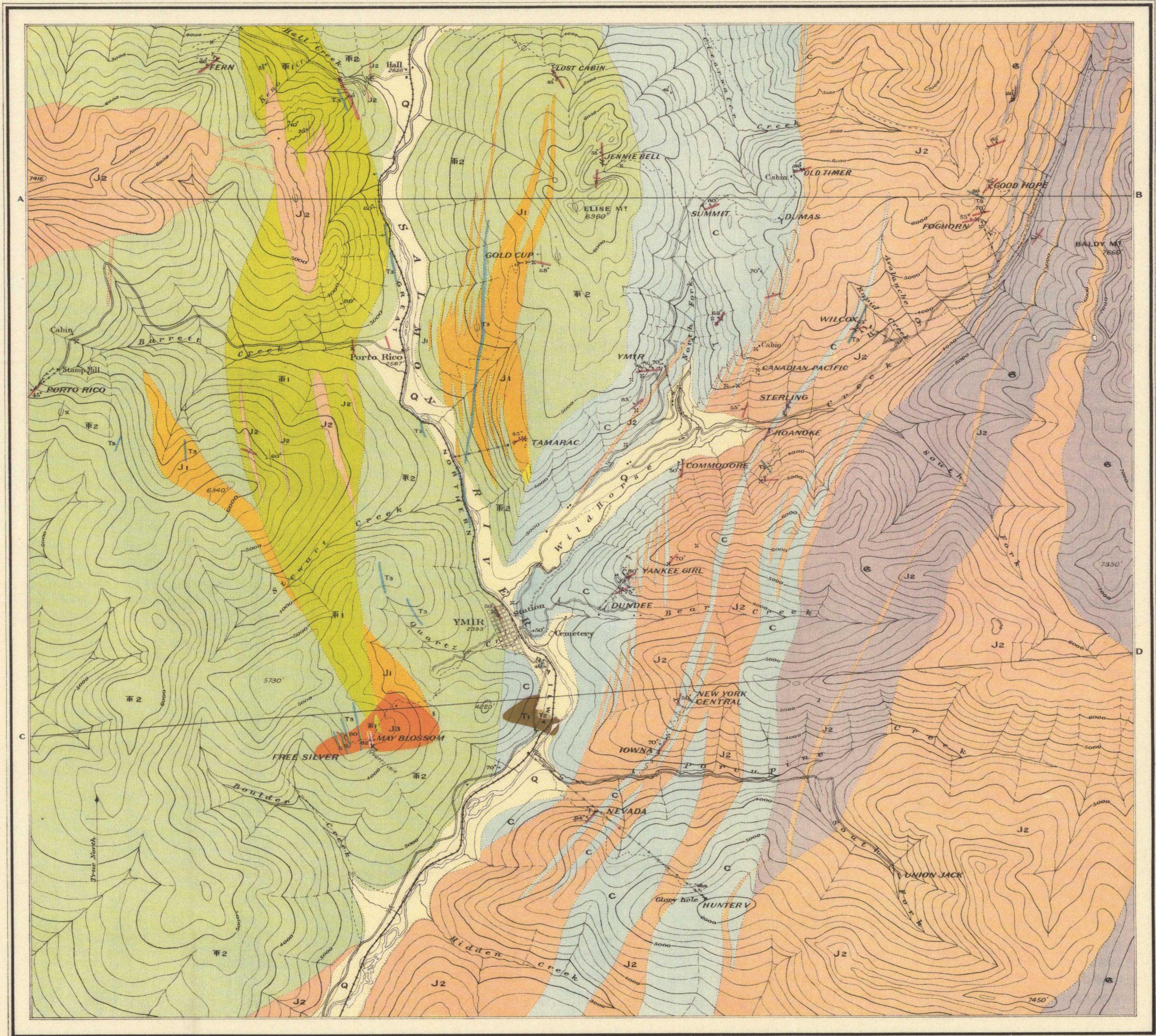


LEGEND

- |            |                                 |                |  |
|------------|---------------------------------|----------------|--|
| CENOZOIC   | QUATERNARY                      | Q              | Fluvio-glacial deposits<br>(all sand, gravel, clay and silt)   |
|            | TERTIARY                        | T <sub>2</sub> | Syenite porphyry, granite porphyry,<br>and lamprophyre dykes   |
|            |                                 | T <sub>1</sub> | Pulaskite<br>(core of monzonite stock)   |
| MESOZOIC   | JURASSIC                        | J <sub>3</sub> | Salmon River monzonite<br>(stock)  |
|            |                                 | J <sub>2</sub> | Quartz veins   |
|            | TRIASSIC(?)                     | J <sub>1</sub> | Nelson batholith, stocks and tongues<br>(granodiorite, granite diorite, porphyritic<br>granite, granite porphyry, and<br>granulite porphyry) |
|            |                                 | R <sub>2</sub> | Granite porphyry tongues<br>(in part schistosity)  |
| PALAEOZOIC | CARBONIFEROUS<br>OR<br>CAMBRIAN | C              | Sills, flows and pyroclastic deposits<br>of augite porphyrite and andesite<br>(in part schistosity)  |
|            | CAMBRIAN<br>OR<br>PRE-CAMBRIAN  | H <sub>1</sub> | Hall series<br>(continental deposits of conglomerate,<br>sandstone, siltstone, and shaly sandstone)  |
|            |                                 | Q              | Pend d'Oreille group<br>(argillite, quartzite, quartz schist,<br>and siliceous schist and siliceous marble)                                  |
- Symbols**
- Geological boundary
  - Strike and dip (50°)
  - Vertical strata
  - Glacial striae

LEGEND

- Culture**
- Roads and buildings
  - Trails
  - Railways
  - Mine tramways
  - Aerial tramways
  - Bridges
  - Tunnels
  - Prospects
- Water**
- Lakes and streams
  - Water courses  
(with intermittent flow)
  - Flumes
- Relief**
- Contours  
(showing approximate land forms  
and elevations above sea-level  
Interval 250 feet)
  - Figures  
(showing height in feet above  
sea-level)
- Magnetic declination about 24° East

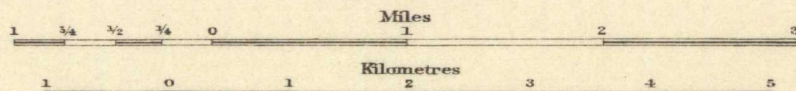


C. O. Senecal, Geographer and Chief Draughtsman.  
A. Jones, Draughtsman.

MAP 175 A  
(Issued 1916)

YMIK  
KOOTENAY DISTRICT  
BRITISH COLUMBIA

Scale, 63,360



1 MILE TO 1 INCH



NOT TO BE TAKEN FROM LIBRARY  
NE PAS SUIR DE LA BIBLIOTHÈQUE

GEOLOGY  
C. W. DRYSDALE, 1914  
TOPOGRAPHY  
(Control and topography subject to revision)  
C. W. DRYSDALE, 1914

To accompany Memoir by C. W. Drysdale.

5.1.2 Ymir, B.C. Map 175 A  
A, Geol. Scale - 1:63,360. 1916

175A