

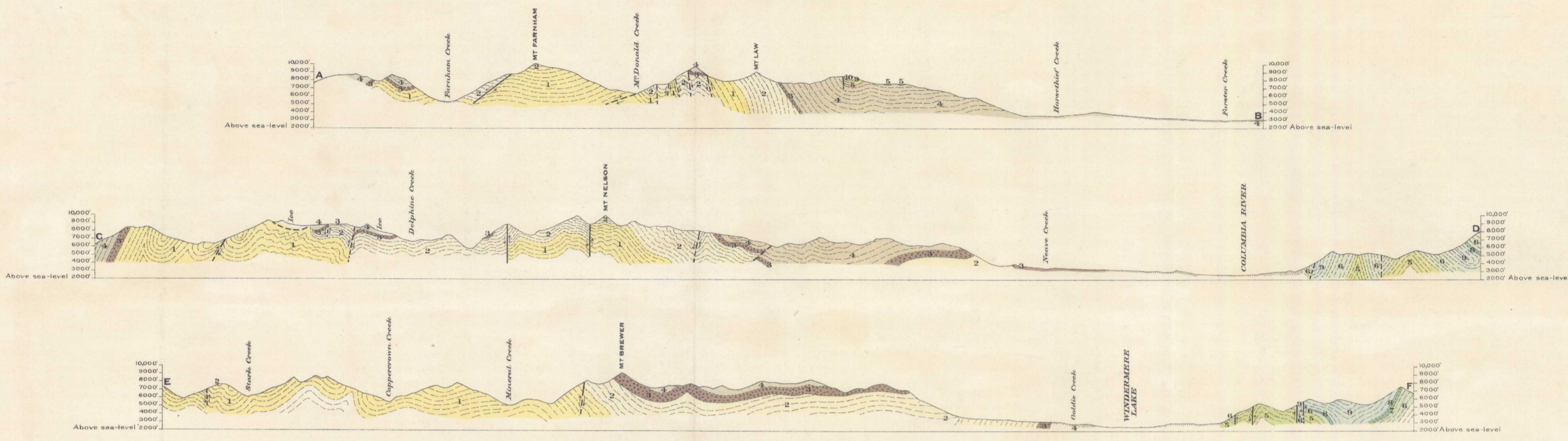
Canada  
Department of Mines

HON. CHARLES STEWART, MINISTER; CHARLES CAMSELL, DEPUTY MINISTER.

GEOLOGICAL SURVEY

W. H. COLLINS, DIRECTOR.

Issued 1926



Structural sections along lines A, B, C, D and E, F  
Scale, horizontal and vertical, 1:25,000

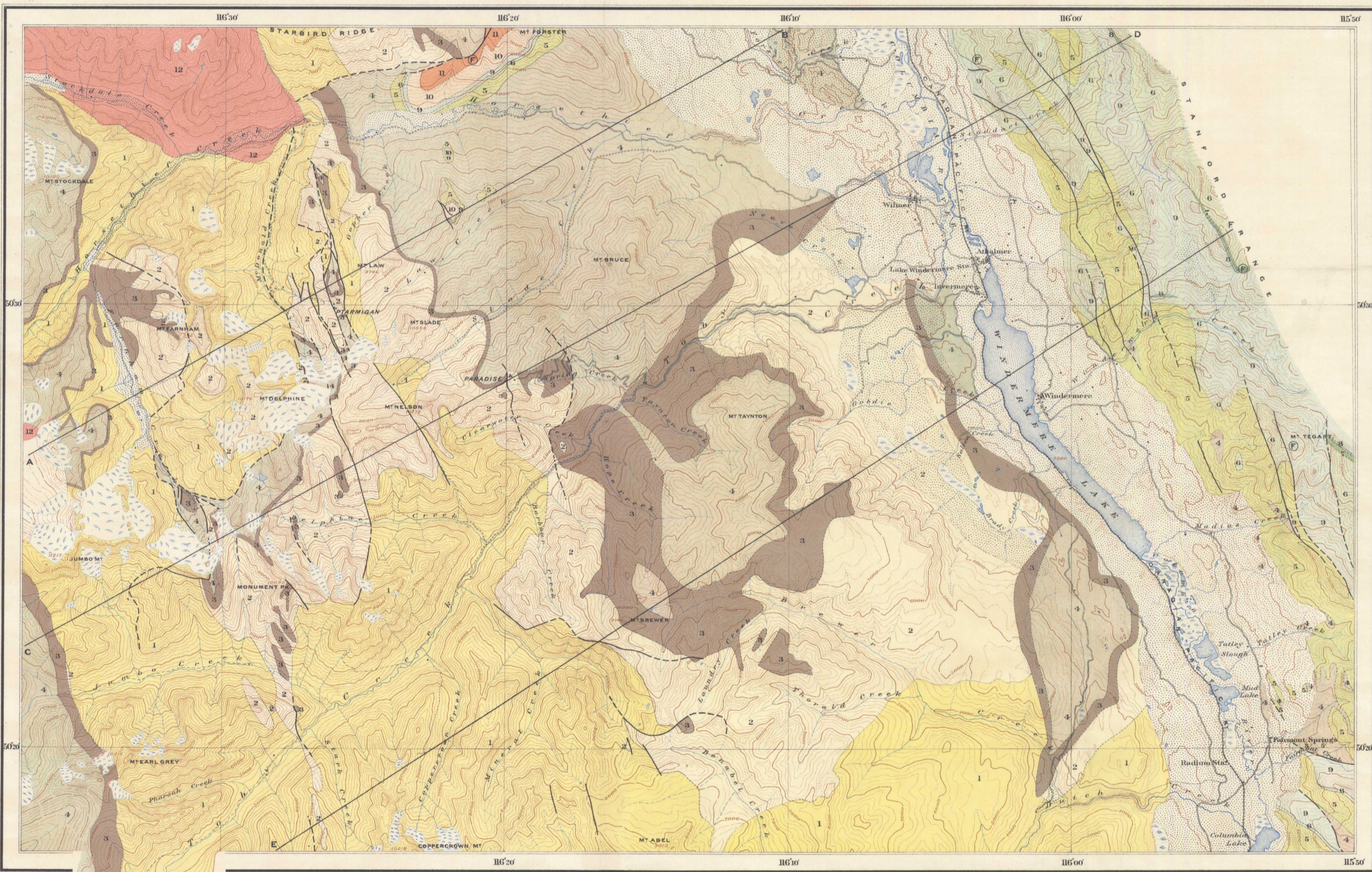
MESO-ZOIC QUATERNARY  
PALAEOZOIC  
LATE PRECAMBRIAN

LEGEND

- GLACIAL AND RECENT  
Stream and glacial deposits, bedrock unconcealed
- JURASSIC (?)  
12  
Oolite, etc.
- UPPER DEVONIAN  
11  
Starbird formation (chiefly limestone)
- DEVONIAN (?)  
10  
Mt. Farnham formation (shale, limestone interbeds)
- SILURIAN AND UPPER ORDOVICIAN  
9  
Beaverfoot and Byrce formations (chiefly magnesian limestone)
- UPPER ORDOVICIAN  
8  
Wanah quartzite (white quartzite and sandstone)
- LOWER ORDOVICIAN  
7  
Glengie shale (shaly shale)
- UPPER CAMBRIAN  
6  
Goodsir formation (shale and limestone)
- UPPER CAMBRIAN  
5  
Ottetall formation (light grey magnesian limestone)
- WINDERMERE  
4  
Horseshief formation (slate, conglomerate limestone)
- UPPER PURCELL  
3  
Taly conglomerate
- UPPER PURCELL  
2  
Mt. Nelson formation (magnesian limestone, slate, quartzite)
- UPPER PURCELL  
1  
Dutch Creek formation (slate, quartzite, magnesian limestone)

Symbols

- Geological boundary (definite)
- Geological boundary (approximate)
- Geological boundary (assumed)
- Fault (deflected)
- Fault (approximate)
- Fault locality



C.D. Stanford, Geographer and Chief Draughtsman.  
S.G. Alexander, Draughtsman.

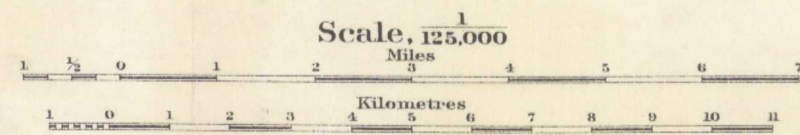
Publication No. 2070

LEGEND

- Culture
- Roads and buildings
- Roads (not well defined)
- Pack trails
- Trails
- Trails (not well defined)
- Railways
- Churches
- Schools
- Post Offices
- Mines
- Dams
- Water
- Rivers and lakes
- Streams (shown approximately)
- Watercourses (with intermittent flow)
- Glaciers
- Springs
- Marshes
- Relief
- Contours (showing level lines and elevations above sea level, interval 200 feet)
- Contours (not well determined)
- Depression contours
- Figures (showing heights in feet above sea level)

Approximate magnetic declination, 25° 15' East

WINDERMERE  
KOOTENAY DISTRICT  
BRITISH COLUMBIA



GEOLOGY  
Geology by S.J. Schofield, 1922, M.F. Buzarovt, 1923, and J.F. Walker, 1922 and 1924.

TOPOGRAPHY  
W.H. Boyd, Chief Topographical Engineer.  
Surveys and topography by K.G. Chipman, 1912, and A.G. Haultain, 1912, 1913. Triangulation by S.C. McLean, 1912.

LIBRARY  
GEOLOGICAL SURVEY  
OF CANADA

NOT TO BE TAKEN FROM LIBRARY  
NE PAS SORTIR DE LA BIBLIOTHÈQUE

2070

Windermere  
(Kootenay District)  
S. 1, 2  
A, Geol.