

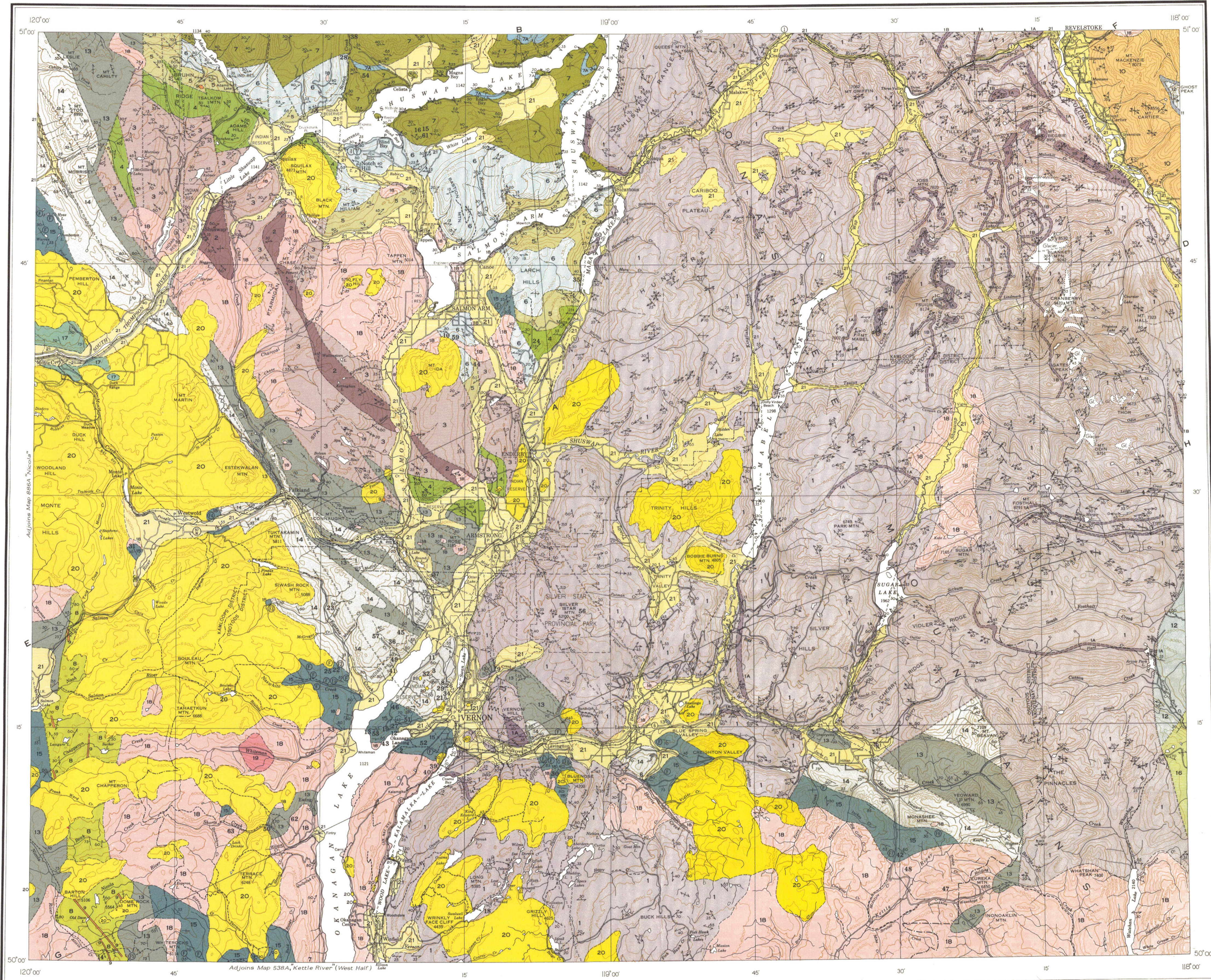
Sections along lines A-B C-D E-F and G-H

SHEET 82L

LEGEND

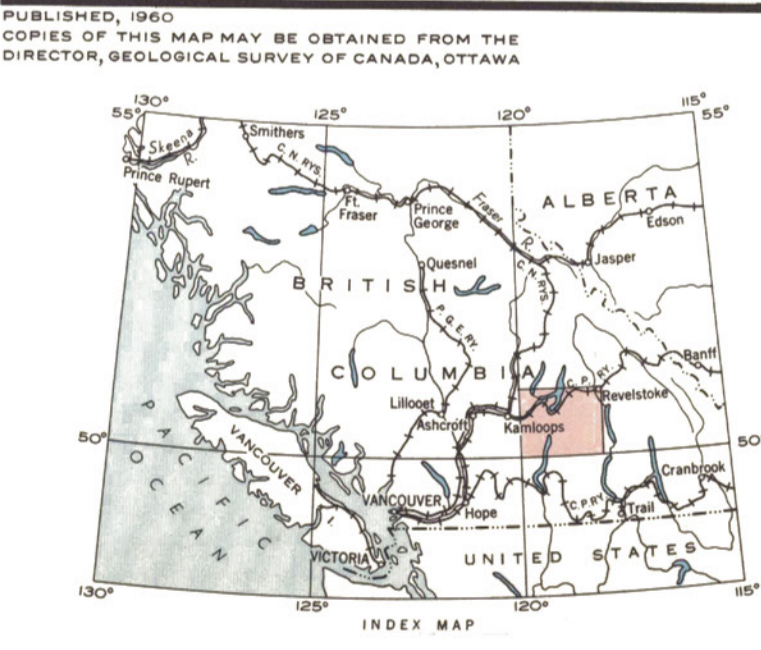
- QUATERNARY**  
**PLEISTOCENE AND RECENT**  
21 Glacial, lacustrine, and fluvial gravel, sand, silt, and clay
- TERTIARY**  
**OLIGOCENE OR MIOCENE**  
**KAMLOOPS GROUP**  
20 Basaltic lava and flow breccia; minor rhyolitic lava and breccia; local sandstone, shale, conglomerate, coal
- CRETACEOUS OR TERTIARY**  
19 Pink to red syenite and quartz syenite, pink and white mottled granite
- JURASSIC AND/OR CRETACEOUS**  
**COAST INTRUSIONS**  
18 Granite, granodiorite and allied rocks
- TRIASSIC**  
**UPPER TRIASSIC**  
**NICOLA GROUP**  
17 Andesite; minor basalt; some limestone and conglomerate
- (?) LOWER AND/OR UPPER TRIASSIC**  
**SLOCAN GROUP**  
16 Slate, quartzite, limestone, phyllite, mica schist; may be in part equivalent to 17
- CARBONIFEROUS (?) AND PERMIAN**  
**CACHE CREEK GROUP (13-15)**  
15 DIVISION C: mainly limestone; minor argillite, quartzite, and andesite lava, breccia, and tuff  
14 DIVISION B: mainly andesite lava and tuff; minor argillite, quartzite and limestone  
13 DIVISION A: mainly argillite
- WINDERMERE (?) OR EARLY PALAEZOIC**  
**LAMDEAU SERIES**  
12 Argillite, phyllite, schist, quartzite, limestone, conglomerate
- WINDERMERE (?) OR CAMBRIAN**  
11 BADSHOT FORMATION: limestone and marble; minor argillite
- WINDERMERE OR (?) CAMBRIAN**  
**HAMILI SERIES**  
10 Quartzite, staurolite schist, argillite, phyllite; minor limestone
- WINDERMERE OR EARLIER**  
9 OLD DAVE INTRUSIONS: serpentinitized, ultramafic dykes
- SHUSWAP TERRANE**  
7A MOUNT IDA GROUP (1-7)  
EAGLE BAY FORMATION: chlorite and sericite schist, slate, limestone, quartzite; minor conglomerate  
7A. Predominantly limestone  
6 SICAMOUS FORMATION: flaggy limestone, sericite schist, graphite schist  
5 MARA FORMATION: argillite, slate, sericite and chlorite schist, limestone  
4 TSALKOM FORMATION: green andesite and agglomerate, chlorite schist, slate  
3 SILVER CREEK FORMATION: slate, sericite schist, garnetiferous quartz-mica schist  
2 CHASE FORMATION: quartzite calcareous quartzite, garnetiferous quartz-mica schist  
1 MONASHEE GROUP  
1A. Granitoid gneiss, augen gneiss, mica-illimanite-garnet schist, quartzite, marble, hornblende gneiss, slate phyllite  
1B. Limestone  
1C. Hornblende gneiss

- Bedding (inclined, vertical, horizontal) .....  
Foliation (inclined, vertical, horizontal) .....  
Lamination (plunging and horizontal) .....  
Bedding and foliation with lineation  
Inclined (with plunging lineation) .....  
Inclined (with two plunging lineations) .....  
Inclined (with horizontal lineation) .....  
Vertical (with horizontal lineation) .....  
Inclined (with horizontal and plunging lineations) .....  
Horizontal (with one horizontal lineation) .....  
Horizontal (with two horizontal lineations) .....  
Inclined (lineation directly down dip) .....  
Fault (approximate, assumed) .....  
Anticline (upright, overturned) .....  
Syncline (upright, overturned) .....  
Fossil locality .....  
Mining property .....  
Mineral occurrence .....  
Geology by H.M.A. Rice, 1945, 1946, and by A.G. Jones, 1947-1951  
To accompany G.S.C. Memoir 296 by A.G. Jones  
Cartography by the Geological Survey of Canada, 1959  
Approximate magnetic declination, 23° 21' East  
Air photographs covering this map-area may be obtained through the National Air Photographic Library, Topographical Survey, Ottawa, Ontario



INDEX TO MINING PROPERTIES

- Annex group gold
- Bachelor group gold, copper
- Beverly group gold, silver, lead, copper, antimony
- Big Ledge zinc, lead
- Black Hawk (Peotich) gold, silver, copper, lead
- Blackbird gold, silver
- Blue Hawk group gold, lead
- Blue Jay gold, arsenic, lead, antimony
- Bon Diable gold, silver
- Bonnie Brae silver, lead, zinc
- Brent copper, lead, silver, gold
- British Empire gold, copper
- Cartwright
- Chrome-Vanadium group chromium, iron
- Copper Chief copper
- Copper Cap copper, lead, zinc
- Copper Island copper
- Copper King group copper
- Densy group gold, copper
- Eagle molybdenum
- Falcon gold, copper, lead, arsenic
- Goodenough group copper, lead, gold, silver
- Grand Times and Hidden Treasure gold
- Grandview group gold, silver, lead
- I. O. U. group gold, copper
- I. X. L.
- Iron Cap copper
- Iron Pit gold, lead, zinc
- Jumbo gold
- Kalamanka (Chance) gold, silver, lead, zinc
- Kestian and Yokahama molybdenum
- Keystone copper, zinc, lead
- Klondike copper, gold
- Lake View gold, silver, copper
- Last Chance gold
- Little Duncan and Panorama gold, silver, copper, lead
- May gold, silver, lead
- Metal Crest lead, zinc
- Miligan group gold
- Mission Hill silver, gold, copper, lead
- Mitchell and Cochrane group silver, lead, copper, zinc
- Monashee group (St. Paul) gold, silver, lead, zinc, copper, antimony, arsenic
- Morning Glory gold, copper
- Mount Ida group silver, lead
- Octagon group silver, copper, antimony, lead, zinc
- Ophir copper, silver, lead, zinc, gold
- Paladorn group gold, silver, lead, zinc
- Paradise and Renown gold, silver
- Pay Roll silver, lead, gold
- Polar Star
- Rex (Three Tramps) gold, copper
- Rita silver, copper, gold
- Ruby gold
- Shuswap lead
- Silver Star group silver, lead, zinc, gold, molybdenum
- Stokum silver, gold
- Sugar Loaf gold, lead
- Sunset silver, lead
- Victory zinc
- Viny copper, gold, silver
- White Elephant and Yellow Rose gold, silver, tungsten
- Zion gold



MAP 1059A  
**GEOLOGY**  
**VERNON**  
KAMLOOPS, OSOYOOS, AND KOOTENAY DISTRICTS  
BRITISH COLUMBIA  
Scale: One Inch to Four Miles = 1/253,440  
Miles 4 2 0 4 8 12

This map has been reprinted from a scanned version of the original map.  
Reproduction par numérisation d'une carte sur papier.

- LEGEND**  
Main highway .....  
Other roads .....  
Power line .....  
Post Office .....  
District boundary .....  
Indian Reserve boundary .....  
Intermittent stream .....  
Marsh .....  
Contours (interval 500 feet) .....  
Glacier .....  
Height in feet above mean sea-level .....  
Base-map compiled by the Topographical Survey, 1956