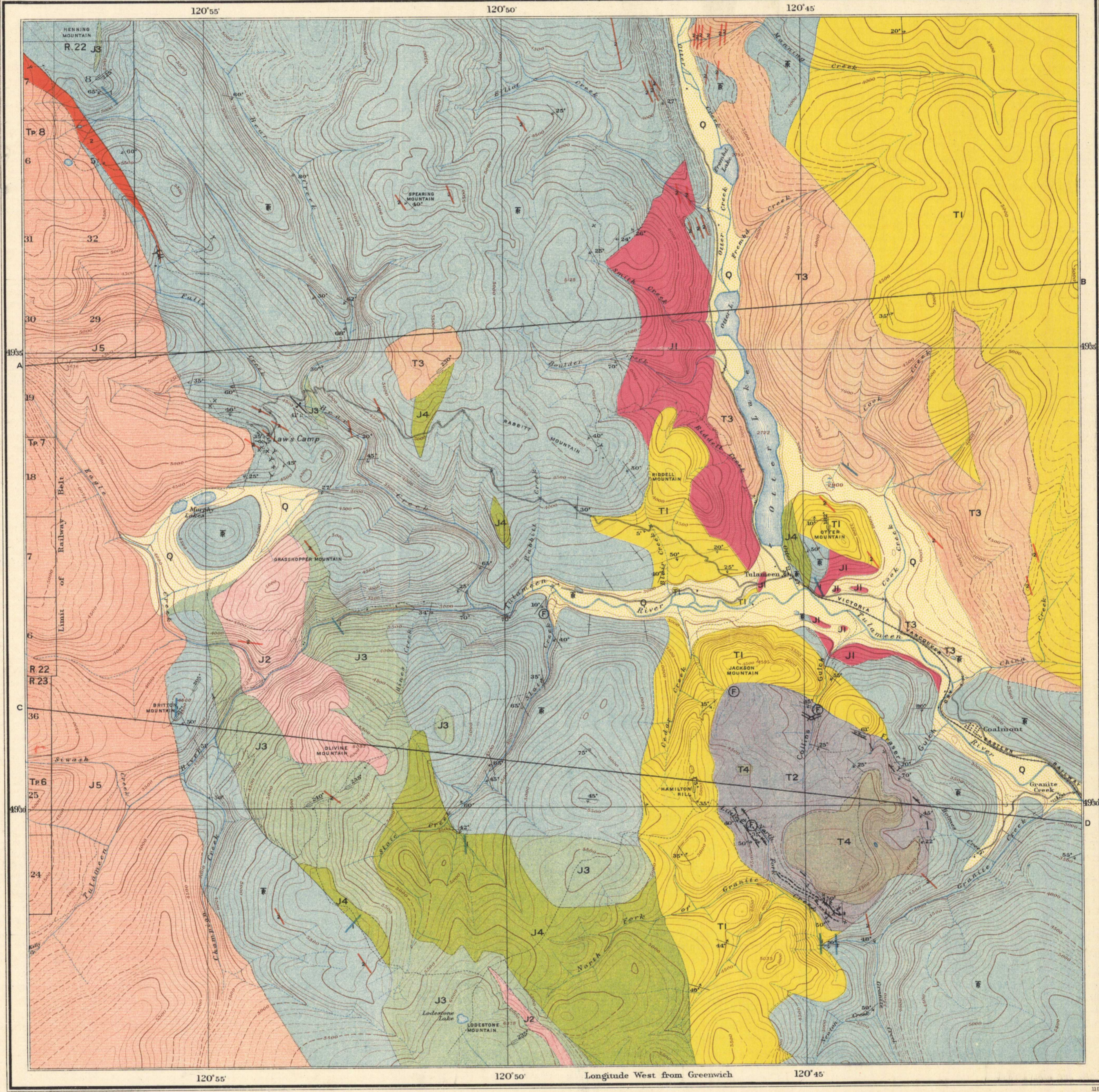


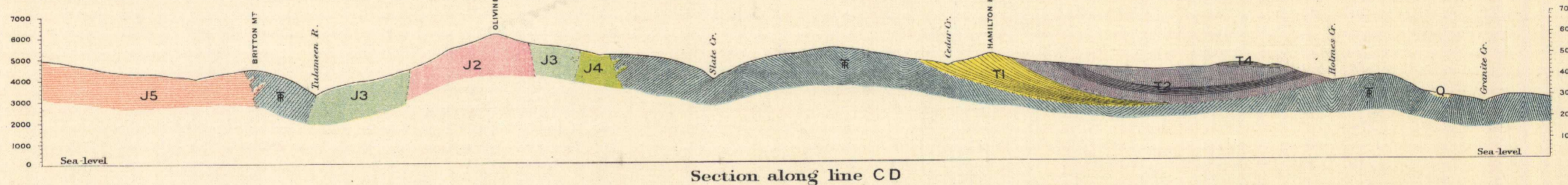
GEOLOGY BRITISH COLUMBIA

- LEGEND**
- QUATERNARY**
Stream and Glacial deposits (Q)
- POST OLILOCENE PROBABLY MIOCENE RECENT**
Olivine basalt (T4)
- OLIGOCENE**
Otter Granite (T3)
- TRIASSIC?**
Coldwater series (Sandstone, conglomerate, shale & coal) (T2)
Cedar volcanic series (basalt, andesite, breccia) (T1)
- JURASSIC**
Eagle granodiorite (J5)
Augite syenite (J4)
Pyroxenite (J3)
Peridotite (J2)
Boulder granite (J1)
- MESOZOIC**
Tulameen group (andesite, breccia, limestone & argillite) (F)
Acid dikes (mainly granite, granodiorite & syenite-porphyr) (2)
- Basic dikes** (amphibole & diabase) (1)
- Symbols**
Geological boundary (precisely located)
Geological boundary (approximately located)
Geological boundary (position assumed)
Dip and strike
Vertical strata
Fault
Glacial striae
Coal seam (exposed)
Coal seam (concealed)
Fossil locality (F)



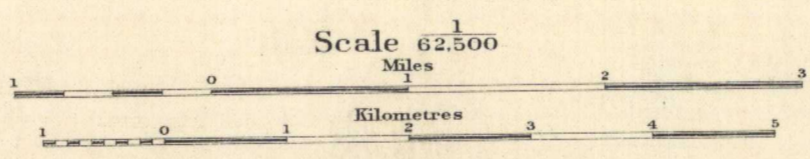
- LEGEND**
- Culture**
Roads and buildings
Trails
Railways
Bridges
Culverts
Shafts
Tunnels
Prospects
Wharves
Post Offices
Railway Belt boundary
- Water**
Rivers and lakes
Watercourses with intermittent flow
Marsh
- Relief**
Contours (showing land forms and elevations above sea level) Interval 100 feet.
Contours not well determined
Depression contours
Figures showing heights in feet above sea level
- Magnetic Declination about 24° 30' East.
Correction: For elevations above sea-level, subtract 100 feet.

C. O. Semical, Geographer and Chief Draughtsman.
A. M. Gregor, Draughtsman.



MAP 46 A
TULAMEEN
YALE DISTRICT
BRITISH COLUMBIA

GEOLOGY
C. CAMSELL 1909
TOPOGRAPHY
(subject to revision)
L. REINECKE 1908-1909



Note. For practical purposes assume 1 MILE TO 1 INCH

NOT TO BE TAKEN FROM LIBRARY
NE PAS SORTIR DE LA BIBLIOTHÈQUE

46A 911

Tulameen
5.1.1
A. Geol.
To accompany Memoir No 26