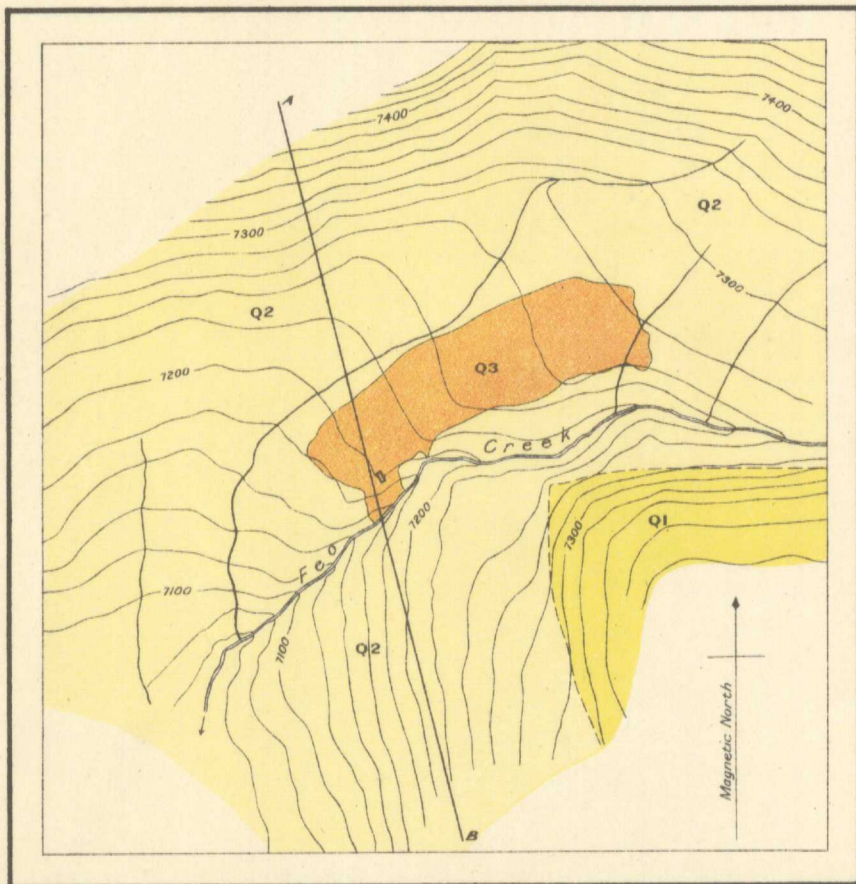


Section along line A-B  
 Note. The thickness of the Limonite bed is somewhat exaggerated



Geological Survey, Canada.

Publication No. 1844

Feo Creek limonite deposit,  
 Taseko Valley, Lillooet District, British Columbia.

Scale of Feet  
 100 0 500 1000

To accompany Report by J.D. MacKenzie,  
 in Summary Report, Part A, 1920.

Legend

- |            |  |    |  |
|------------|--|----|--|
| Quaternary |  | Q3 | Limonite                                     |
|            |  | Q2 | Talus, alluvium                              |
|            |  | Q1 | Moraine (recent)                             |
| Tertiary   |  | T  | Taseko formation                             |
|            |  |    | Geological boundary (observed)               |
|            |  |    | Geological boundary (located within 20 feet) |
|            |  |    | Open cuts and trenches                       |

Elevations subject to revision

Feo Creek  
 5-1-2  
 A, Geol.

NOT TO BE TAKEN FROM LIBRARY  
 NE PAS SORTIR DE LA BIBLIOTHEQUE



1844

This map has been produced from a scanned version of the original map  
 Reproduction par numérisation d'une carte sur papier