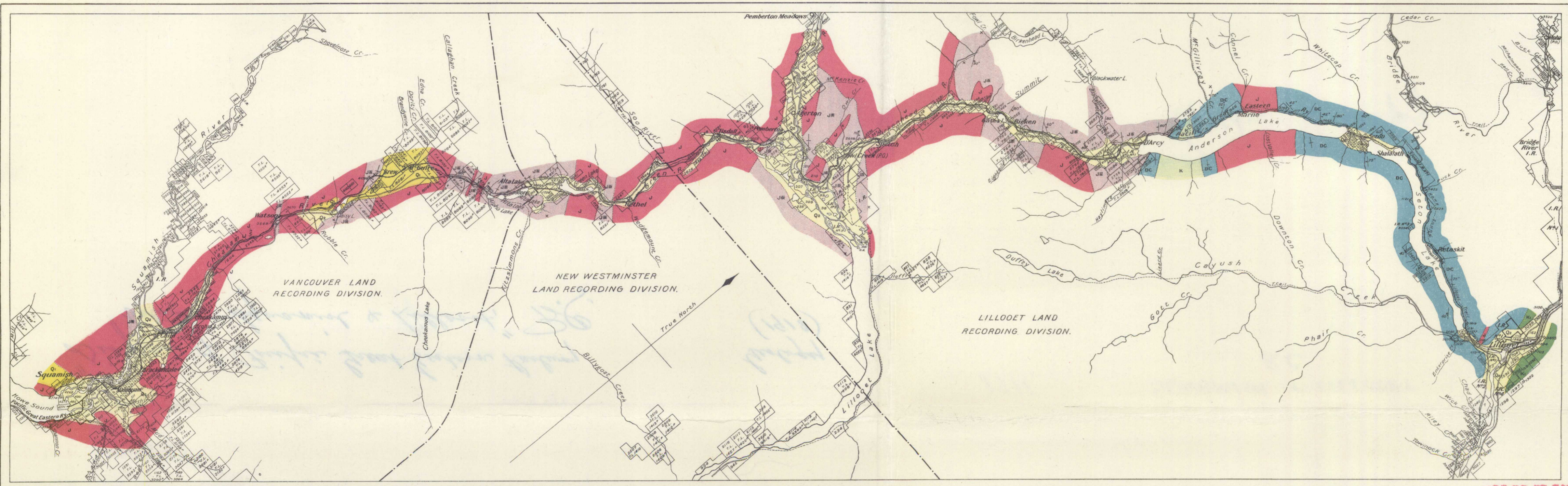
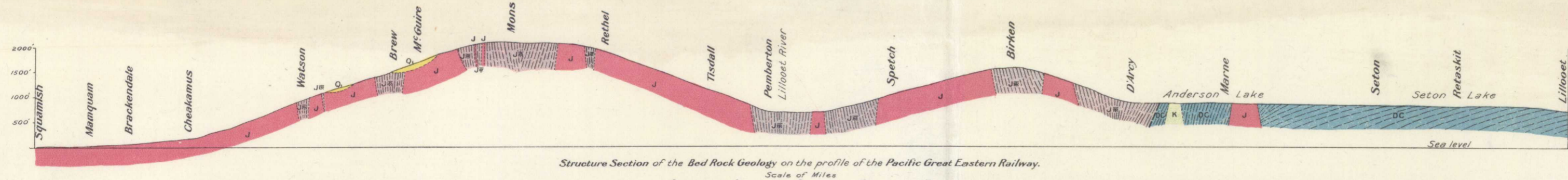


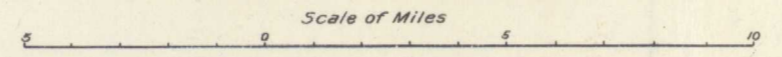
PROPERTY OF LIBRARY
 GEOLOGICAL SURVEY OF CANADA
 601 Booth St., Ottawa
 LENT TO: *Mr. J. H. ...*
 PLEASE RETURN
 DATE: *1917*



- Legend**
- Quaternary**
- Q₂ Recent and Glacial (Gravels, sands, clay)
 - Q₁ Pleistocene(?) (Lava flows)
- Mesozoic**
- K₁ Lower Cretaceous (Sandstones, argillites, conglomerate)
 - K Cretaceous? (Microplitic granite)
 - J Upper Jurassic (Granodiorite, granite)
 - JB Jura-Triassic (Quartzite, argillite, limestone, conglomerate, chlorite and talc-schists, volcanic rocks)
- Paleozoic**
- DC Devono-Carboniferous (Cherty quartzite, argillite, crystalline limestone, volcanic rocks, schists)
- Symbols**
- Geological boundary, closely defined.
 - - - Geological boundary, imperfectly defined.
 - Fault, defined.
 - - - Fault, assumed.
 - ↘ Dip and strike
 - ∞ Glacial striae
 - x Prospects.

Geological Survey, Canada.

Diagram showing the geology along the route traversed by the Pacific Great Eastern Railway between Squamish and Lillooet, British Columbia.



To accompany Memoir by C. Gamsell

Geology by C. Gamsell 1917.

NOT TO BE TAKEN FROM LIBRARY
 NE PAS SORTIR DE LA BIBLIOTHÈQUE



1711