

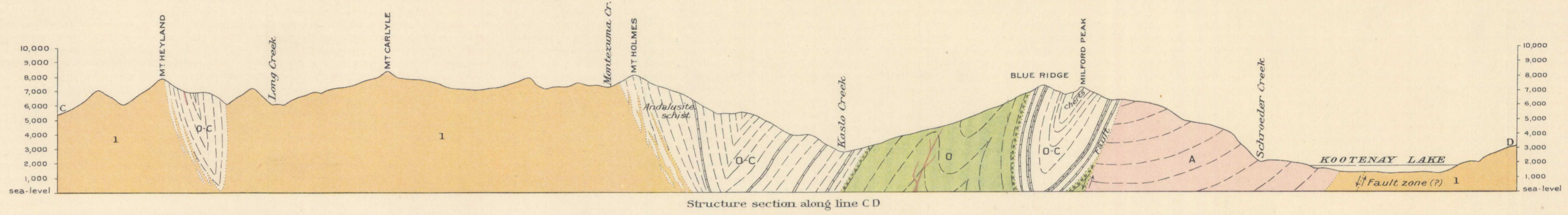
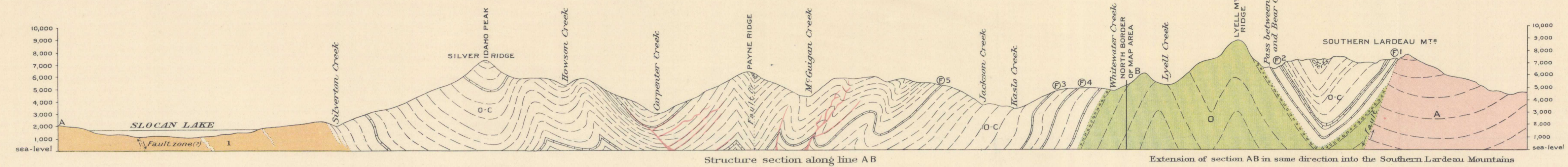
5.1.2  
A. Geol.  
Ocean

Canada  
Department of Mines

HON. E. L. PATENAUDE, MINISTER; R. G. McCONNELL, DEPUTY MINISTER.

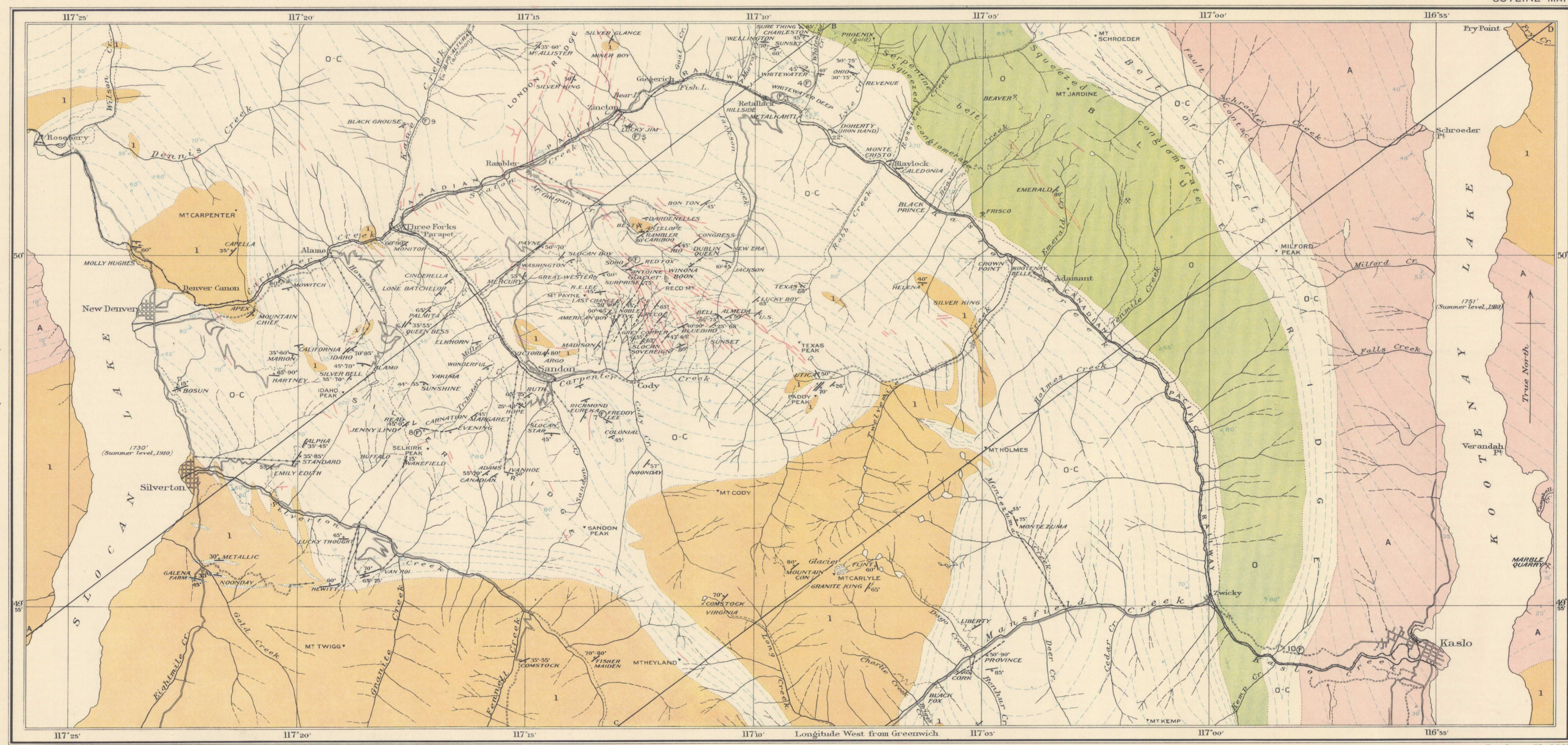
GEOLOGICAL SURVEY

Issued 1917



LEGEND

- MESOZOIC**
- JURASSIC AND POST-JURASSIC
  - Silver-lead-zinc vein (Arrows indicate directions of dip and rake or pitch, of ore sheets in vein).
  - Granite porphyry dykes (Tongues from Nelson batholith are genetically connected with ore zones).
  - Nelson granodiorite (Batholith, cupola, stocks and tongues). Country rock to many silver-lead veins particularly where associated with lemprophyre dykes.
- PALAEZOIC**
- POST-CAMBRIAN (ORDOVICIAN TO CARBONIFEROUS)
  - Slocan series (Argillite, slate, phyllite, quartzite, carbonaceous limestone, chert and andalusite schist). Main country rock to silver-lead-zinc deposits.
  - Kaslo volcanics (greenstones) (Sheared and mashed hornblende and quartz porphyries, tuff, breccia, serpentinite, talcose schist, diorite and gabbro with interbeds of siliceous quartzite and squeezed conglomerate). Country rock to gold, quartz, and antimony deposits.
- PRE-CAMBRIAN**
- PRE-BELTIAN
  - Shuswap series (Quartz biotite and muscovite schists, quartzite, paragneiss and marble. This series includes much typical granitic and pegmatitic material).
- Symbols**
- Fossil localities
- Approximate structure contours indicating strike and dip of formations
- Geological boundary
- Prospect
- Aerial tramway
- Railway
- Wagon road
- Trail



C. O. Senecal, Geographer and Chief Draughtsman.  
A. M. Gregor, Draughtsman.

Catalogue No. 1667

SLOCAN MINING AREA, KOOTENAY DISTRICT, BRITISH COLUMBIA.

Scale of Miles

To accompany Summary Report by C. W. Drysdale, 1916.

Drainage and part of culture from  
Sardons topographical map, 1909-II.  
Geology by O. E. LeRoy, 1909-10  
and C. W. Drysdale, 1916.

Slocan  
5.1.2