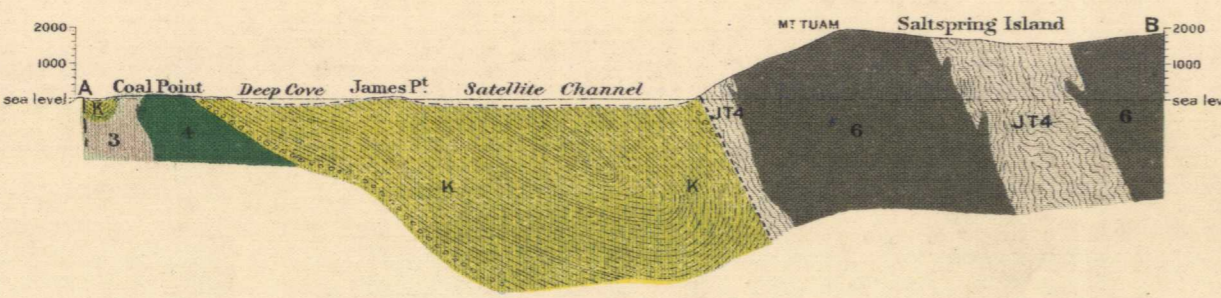
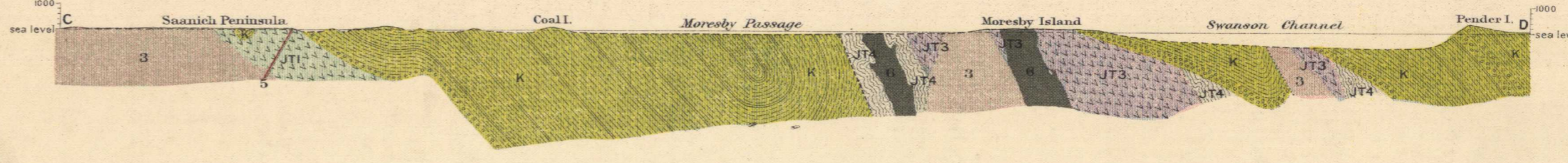


GEOLOGICAL SURVEY



Structural section along line A B
 Scale, horizontal and vertical, 42,500



Structural section along line C D
 Scale, horizontal and vertical, 42,500

GEOLOGY

TOPOGRAPHY

LEGEND

QUATERNARY	SYMBOLS	DESCRIPTION
Q	[Symbol]	Superficial deposits (completely masking bed rock)
T	[Symbol]	Metochin Volcanics (basalt, tuff, etc.)
T	[Symbol]	Metochin Volcanics (diorite dykes)
K	[Symbol]	Nanaimo series (conglomerate, sandstone and shale)
S	[Symbol]	Sicker Gabbro diorite Porphyrite (masses and dykes)
S	[Symbol]	Diorite Porphyrite (dykes)
S	[Symbol]	Granodiorite Porphyrite (masses and dykes)
S	[Symbol]	Saanich Granodiorite
2	[Symbol]	Colquitz Quartz Diorite Gneiss
1G	[Symbol]	Wark Gabbro diorite Gneiss (G shows locality of gabbro and note gabbro differentials)
J-T4	[Symbol]	Contact complex of Wark Gneiss with Saanich Granodiorite and Colquitz Gneiss
J-T4	[Symbol]	Sicker Schists (slaty and quartzite schists of sedimentary origin partly tuffaceous, and chlorite schists of volcanic origin)
J-T3	[Symbol]	Sicker Volcanics (andesite and basalt andesite flows tuffs, etc.)
J-T2	[Symbol]	Sutton Formation (crystalline limestone)
J-T1	[Symbol]	Vancouver Volcanics (andesite, andesoidal, porphyry tuffs, etc.)
J-T1	[Symbol]	Vancouver Volcanics (porphyry dykes)
J-T1	[Symbol]	Contact complex of Vancouver Volcanics with Saanich Granodiorite and Colquitz Gneiss

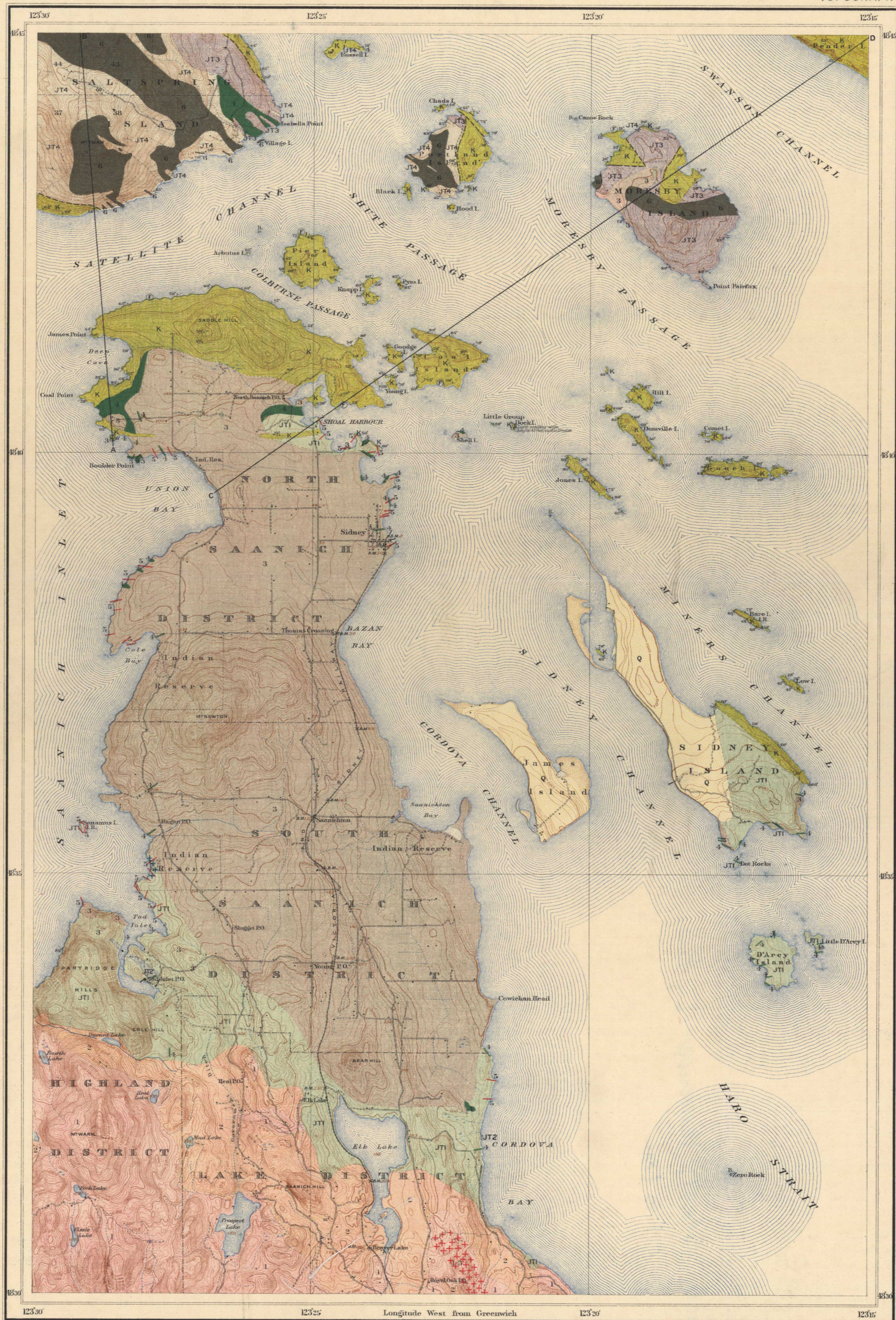
Note: The relative age of the Sicker gabbro diorite porphyrite and of the Sicker schists and volcanics, as compared with the ages of other districts (see Nanaimo) is doubtful. Some of the dykes and masses of granodiorite porphyrite may be older than the Saanich granodiorite.

LEGEND

Culture

[Symbol]	Streets, roads and buildings
[Symbol]	Private roads and roads not well defined
[Symbol]	Trails
[Symbol]	Railways
[Symbol]	Bridges
[Symbol]	Churches and schools
[Symbol]	Cemeteries
[Symbol]	Wharves
[Symbol]	Lighthouses
[Symbol]	Beacons
[Symbol]	Triangulation stations
[Symbol]	Bench marks
[Symbol]	District boundaries
Water	
[Symbol]	Rivers and lakes
[Symbol]	Watercourses with intermittent flow
[Symbol]	Fresh marshes
[Symbol]	Tidal flats
[Symbol]	Springs
Relief	
[Symbol]	Contours (showing land forms and elevations above sea level) Interval 20 feet
[Symbol]	Figures showing heights in feet above sea level
[Symbol]	Sand

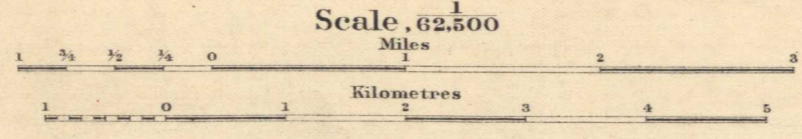
Geographical position by triangulation based on U.S. and U.S. military base lines and Vancouver base lines.
 Average magnetic declination 24' 30" East.



C.O. Senecal, Geographer and Chief Draughtsman.
 A. Dickson, and A.F. Clark, Draughtsmen.

MAP 72 A
 (Issued 1914)

SAANICH SHEET
 VANCOUVER ISLAND
 BRITISH COLUMBIA



Note: For practical purposes assume 1 MILE TO 1 INCH

GEOLOGY	TOPOGRAPHY
C.H. CLAPP, 1904	R.H. CHAPMAN, (IN CHARGE) 1909
	K.G. CHIPMAN, 1909
	S.C. McLEAN, (TRIANGULATION) 1909

NOT TO BE TAKEN FROM LIBRARY
 NE PAS SORTIR DE LA BIBLIOTHEQUE

72A 1914

Saanich
 5.1.2
 A. Geol.