

Canada Department of Mines

HON. CHARLES STEWART, MINISTER; CHARLES CAMSELL, DEPUTY MINISTER.

GEOLOGICAL SURVEY

W. H. COLLINS, DIRECTOR.

Issued 1922

PRELIMINARY MAP

LEGEND

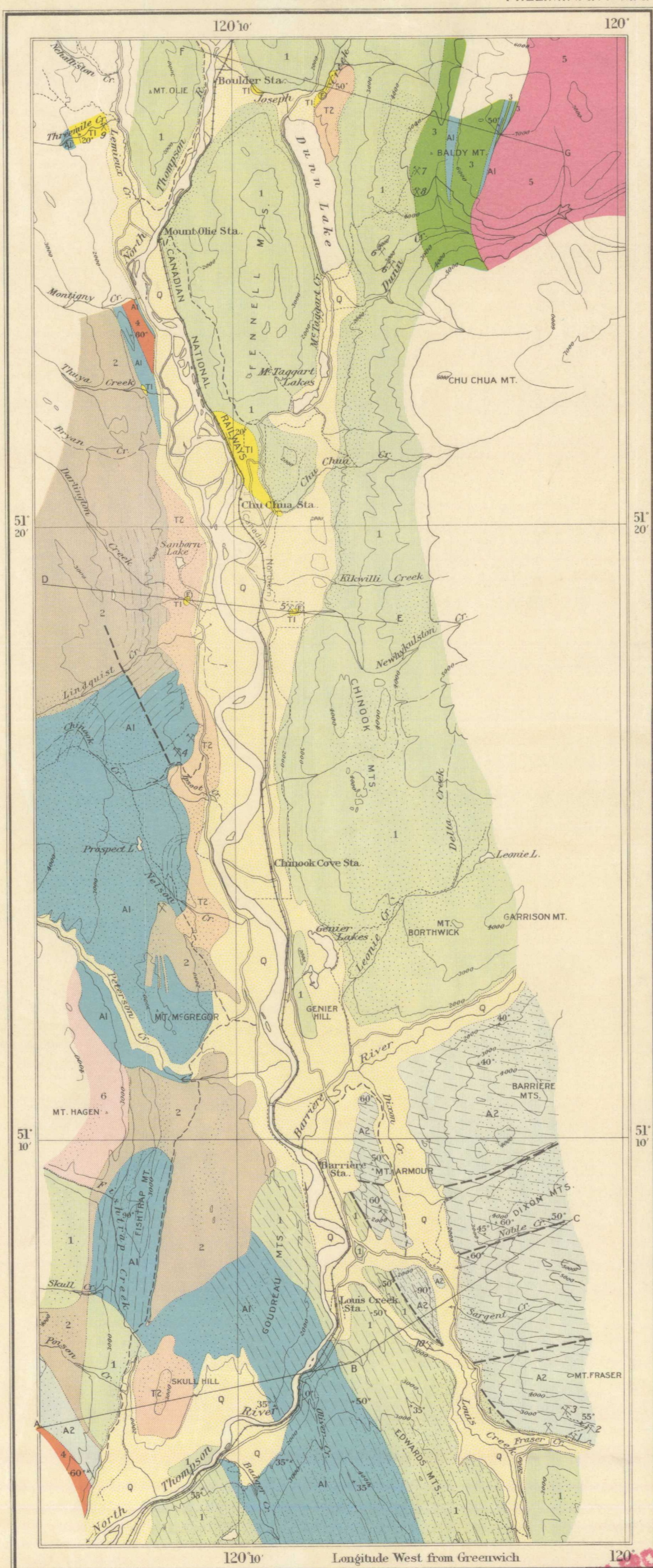
- | | | |
|---|---|--|
| QUATERNARY
RECENT
PLEISTOCENE
MIOCENE
Eocene
TERTIARY
MESOZOIC (?)
JURASSIC?
PALAEOZOIC OR
PRECAMBRIAN | Q | River gravel, sand, silt
(White silt) |
| | [Dotted pattern] | glacial drift |
| | T2 | Skull Hill formation
(hornblende, and augite andesites) |
| | T1 | Chu Chua formation
(conglomerate, arkose, shale, coal) |
| | 6 | Peterson Creek syenite |
| | 5 | Baldy biotite granodiorite and granite |
| | 4 | Biotite granodiorite and
quartz diorite sills |
| | 3 | Micropegmatite pyroxenite sills |
| | 2 | Darlington hornblende granodiorite
and granite |
| | A2 | Barrière formation
(quartzite, sericite schist, argillite,
limestone, chlorite schist) |
| 1 | Fennell formation
(greenstone sills and pillow lava) | |
| A1 | Badger Creek formation
(micaceous quartzite, quartz slate,
biotite schist, hornblende schist, dolomite) | |

Symbols

- Geological boundary (defined)
- Geological boundary (approximate)
- Fault
- Regional strike of bedding
- Dip and strike
- Fossil locality
- Mine prospect, or placer digging
- Road
- Road not well travelled
- Trail
- Contours, interval 1000 feet

Approximate magnetic declination, 25° East
MINES, PROSPECTS, OR PLACER DIGGINGS

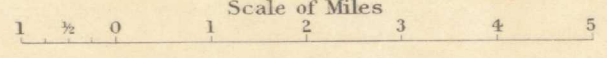
- 1 FORTUNA
- 2 PLATO
- 3 SKOOKUM
- 4 ALLIES
- 5 CHU CHUA COAL-FIELD
- 6 GOLD HILL
- 7 WIND PASS
- 8 SWEET HOME
- 9 THREE MILE PLACER
- 10 LOUIS CREEK PLACER



C. O. Senécal, Geographer and Chief Draughtsman.
A. M. Gregor, Draughtsman.

Publication No. 1945

NORTH THOMPSON VALLEY BETWEEN JOSEPH CREEK AND LOUIS CREEK, KAMLOOPS DISTRICT, BRITISH COLUMBIA.



To accompany Report by W. L. Uglow,
in Summary Report, Part A, 1921.

Sources of Information
Geology by W. L. Uglow, 1921.
Base map prepared from topographical
map sheets of the North Thompson
Valley by D. A. Nichols, 1918, 1919.

North Thompson valley

S.1.2
A, Geol.

1945