



LEGEND

- CENOZOIC**
- TERTIARY**
Eocene (?) OR LATER
- 22-24 **CORYELL PLUTONIC ROCKS:** syenite; minor granite, monzonite and shonkinite; 22a, porphyritic augite monzonite; 22b, pulaskite
 - 23 **SHEPPARD PLUTONIC ROCKS:** leucocratic granite
 - 24 **MCGREGOR INTRUSIONS:** shonkinite
- CRETACEOUS (?)**
UPPER CRETACEOUS OR (?) LATER
- 21 **SOPHIE MOUNTAIN FORMATION:** conglomerate, minor argillite
- LOWER CRETACEOUS (?)**
- 20 **VALHALLA PLUTONIC ROCKS:** granite; minor pegmatite; 20a, granite and granodiorite
 - 19 **NELSON PLUTONIC ROCKS:** 19a, mainly porphyritic granite; 19b, non-porphyritic granite to granodiorite; 19c, granodiorite; 19d, quartz diorite; 19e, syenite; 19f, mainly fine-grained, porphyritic syenite to quartz diorite; 19g, Rossland "monzonite"; 19h, pseudodiorite and pyroxene-hornblende-biotite rock; 19i, mylonite; 19j, pegmatite; 19k, diorite
 - 18 **Ultrabasic rocks:** serpentinite
- MESOZOIC**
- JURASSIC**
MIDDLE AND (?) UPPER JURASSIC
- 17 **HALL FORMATION:** argillite, sandstone, and conglomerate; 17a, may not be Hall
- LOWER JURASSIC**
- 16 **ROSSLAND FORMATION:** andesite, latite, basalt, flow breccia, augite porphyry, agglomerate, tuff; minor shale; 16a, metamorphosed greenstone (may not be Rossland)
 - 15 **SINEMURIAN BEDS:** argillite, argillaceous quartzite, slate; minor flows and pyroclastic rocks. May be equivalent to upper parts of 13 and 14
- TRIASSIC AND (?) LOWER JURASSIC**
- 12, 13 **KASLO GROUP:** greenstone; minor slate (Triassic)
 - 13 **SLOCAN GROUP:** slate, argillite, quartzite, limestone, conglomerate, tuff; 13a, includes some volcanic rocks; 13b, paragneiss (probably Slocan group)
 - 14 **Argillite, slate, argillaceous quartzite; minor limestone; 14a, paragneiss**
- PENNSYLVANIAN (?)**
- 11 **MOUNT ROBERTS FORMATION:** slate, limestone, argillaceous quartzite, greenstone
- ORDOVICIAN**
LOWER AND (?) MIDDLE ORDOVICIAN
- 9 **ACTIVE FORMATION:** slate, argillite, argillaceous quartzite; minor limestone
- CAMBRIAN**
MIDDLE CAMBRIAN
- 8 **NELWAY FORMATION:** dolomite, limestone, phyllite, and slate
- LOWER CAMBRIAN**
- 7 **LAIB FORMATION:** argillite, argillaceous quartzite, limestone, dolomite, phyllite, and schist; 7a, includes some Reno formation
 - 5, 6 **QUARTZITE RANGE FORMATION:** white, green, and pinkish quartzite; minor argillaceous quartzite and conglomerate
 - 6 **RENO FORMATION:** argillaceous quartzite, schist, and argillite; minor limestone
 - 10 **White quartzite, schist, limestone, and paragneiss; minor argillite and greenstone**
- WINDERMERE (?)**
- 4 **THREE SISTERS FORMATION:** green grit, quartzite, and conglomerate
- WINDERMERE**
- 3 **MONK FORMATION:** green argillite, phyllite, and argillaceous schist; minor limestone; basal conglomerate
 - 1, 2 **TOBY FORMATION:** conglomerate; minor interbedded argillite and limestone
 - 2 **IRENE VOLCANIC FORMATION:** greenstone, minor interbedded argillite and limestone
 - B **Argillite, argillaceous quartzite, greywacke; locally conglomerate; minor flows and pyroclastic rocks. Probably not older than Carboniferous, but in part may be Jurassic**
 - A **Augen gneiss, hornblende-biotite-feldspar gneiss; minor crystalline limestone and skarn. Probably Early Mesozoic**

- Drift-covered area
- Bedding (inclined, overturned)
- Bedding (vertical, tops known, tops not known)
- Bedding (dip known, top of bed unknown)
- Schistosity (inclined)
- Gneissosity, stratiform foliation (inclined, vertical)
- Fault (defined, approximate, assumed)
- Anticline, syncline (defined)
- Anticline, syncline (overturned)
- Fossil locality

Geology compiled from published maps and field work by H.W. Little
1948-1950, 1952

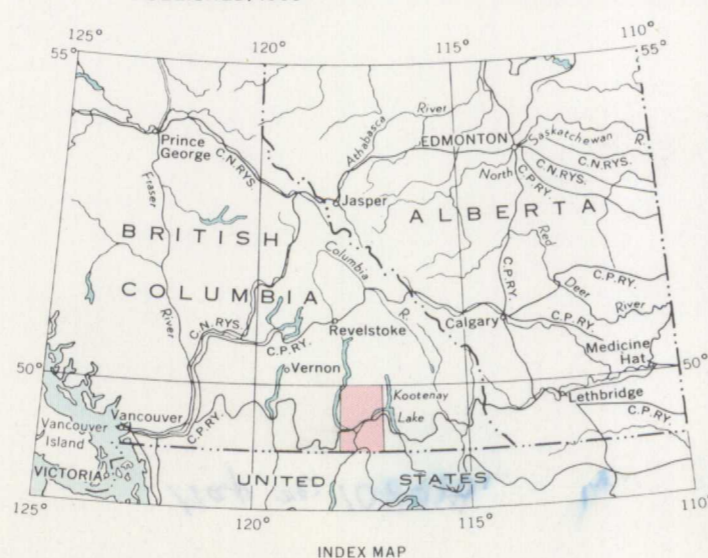
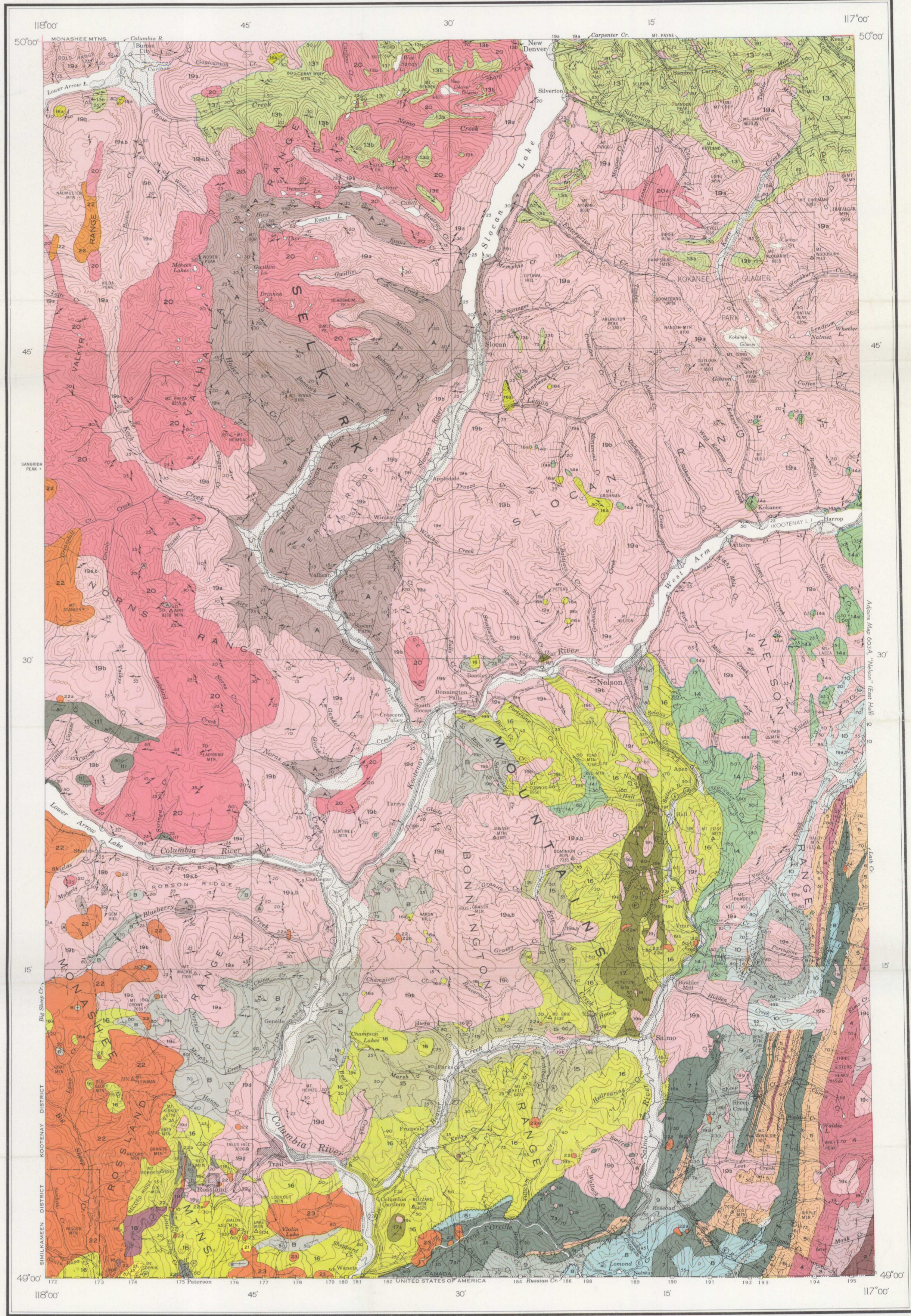
To accompany G.S.C. Memoir 308 by H.W. Little

For Mining properties see Map 1091A, "Nelson" (West Half)

Base-map compiled by the Surveys and Mapping Branch

Cartography by the Geological Survey of Canada, 1960

Air photographs covering this map - area may be obtained through the National Air Photographic Library, Topographical Survey, Ottawa, Ontario.



PUBLISHED, 1960

MAP 1090A
GEOLOGY
NELSON
(West Half)
KOOTENAY AND SIMILKAMEEN DISTRICTS
BRITISH COLUMBIA

Scale: One Inch to Four Miles = $\frac{1}{253,440}$
Miles 0 4 8 12

COPIES OF THIS MAP MAY BE OBTAINED FROM THE DIRECTOR, GEOLOGICAL SURVEY OF CANADA, OTTAWA

APR 12 1961

LEGEND

- Roads, hard surface, all weather
- Roads, loose surface, all weather
- Roads, loose surface, dry weather
- Trail and disused road
- Horizontal control point
- International boundary
- District boundary
- Park boundary
- Boundary monument
- Intermittent stream
- Glacier
- Contours (interval 500 feet)
- Contours (position approximate)
- Height in feet above mean sea-level

Approximate magnetic declination, 22° 18' East

NOT TO BE TAKEN FROM LIBRARY
NE PAS SORTIR DE LA BIBLIOTHÈQUE

5-1-2 NELSON, B.C.
scale - 1" to 4 mi - Map No. 1090A
1960
- 2copy

Library
Geological Survey of Canada
1090A