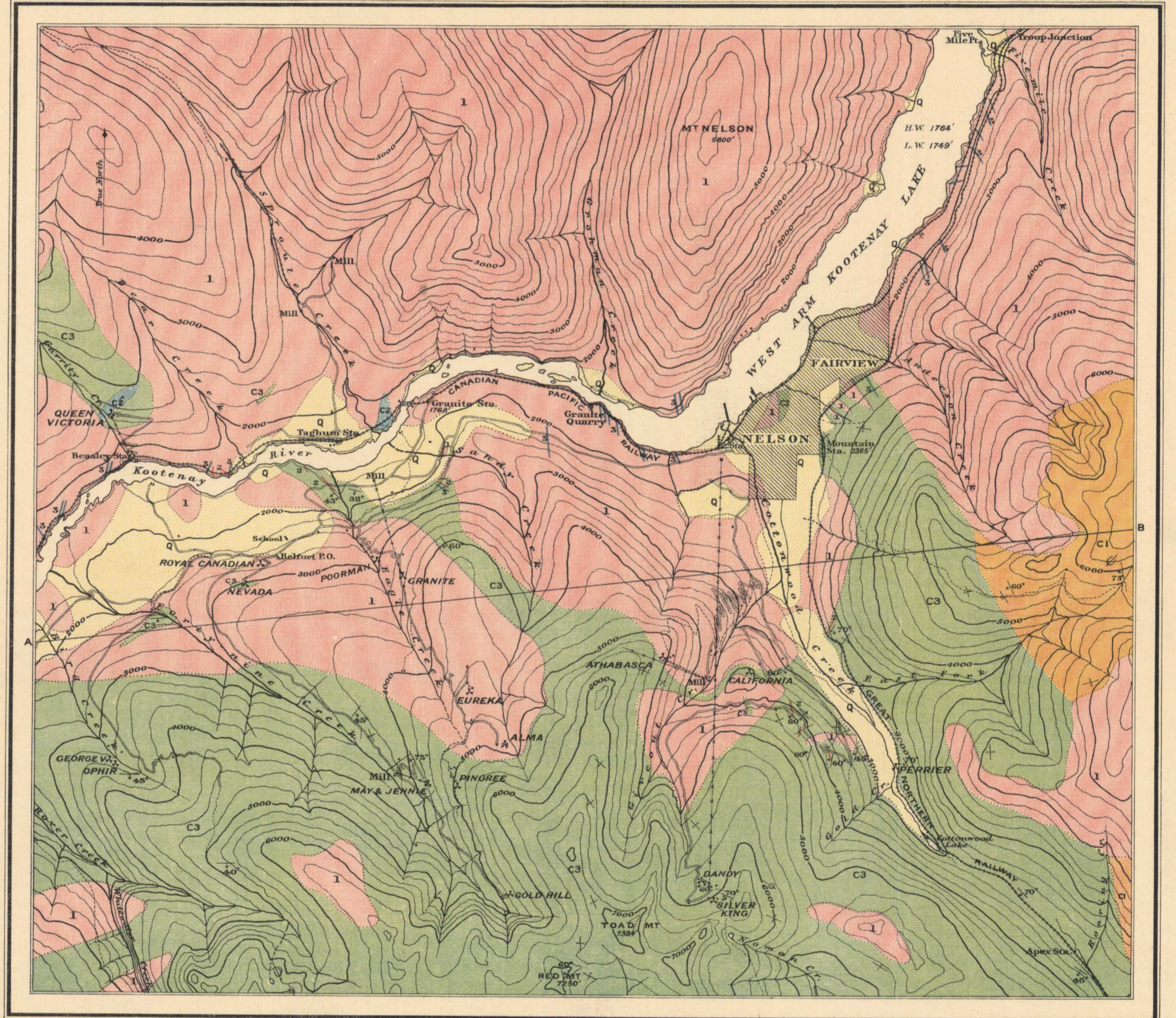
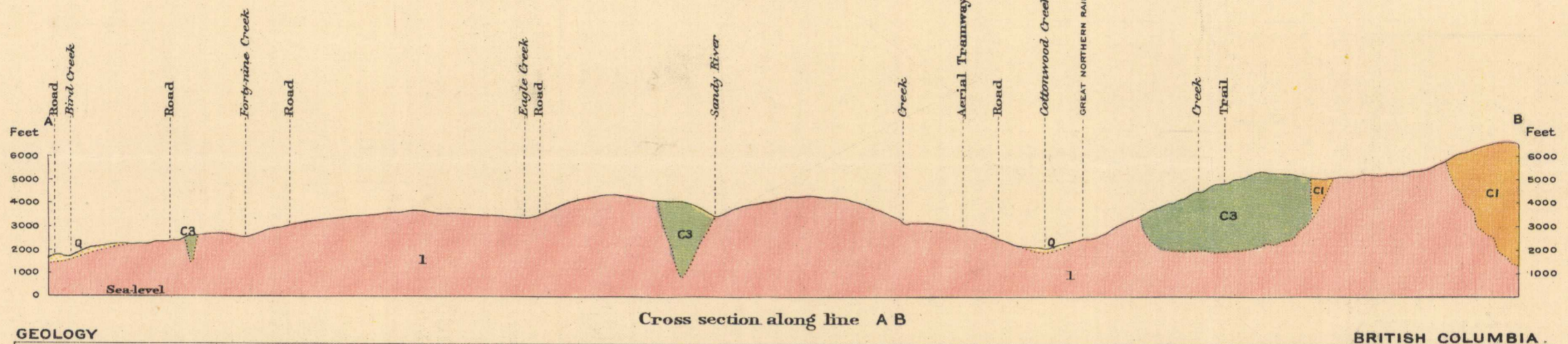


Canada
Department of Mines
GEOLOGICAL SURVEY

HON. ROBERT ROGERS, MINISTER; A. P. LOW, DEPUTY MINISTER;
R. W. BROCK, DIRECTOR.



LEGEND

- QUATERNARY
- GLACIAL AND RECENT
- q**
Boulder clay, wash alluvial clay, sand and gravel
- POST-JURASSIC(?)
- 1/3/1**
Mica, hornblende and pyroxene lamprophyres (dikes and sills)
- JURASSIC(?)
- 1/2/1**
Quartz porphyry, quartz syenite porphyry, granite (dikes)
- 1**
Nelson batholith (granite, monzonite, quartz diorite)
- MESOZOIC
- CARBONIFEROUS(?) AND POST-CARBONIFEROUS(?)
- C3**
Rossland group (augite porphyry, quartz porphyry, tuff, chlorite, actinolite and sericite schist, andesite)
- C2**
Rossland group (crystalline limestone, quartz and chlorite schist)
- CARBONIFEROUS(?)
- C1**
Fend D'Oreille group (slate, quartzite, quartz and andalusite schist)
- Symbols
- 45°**
Strike and dip
- +**
Vertical strata
- Glacial striae

LEGEND

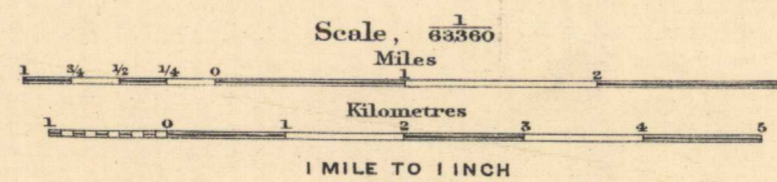
- Roads and buildings
- Trails
- +—**
Railways
- +—+—**
Mine tramways
- +—+—+—**
Aerial tramways
- +—**
Bridges
- △**
Mines
- ***
Quarries
- +—+—**
Wharves
- +—+—**
Rivers and streams
- Contours (showing approximate land forms and elevations above sea-level. Interval 250 feet)
- 5800'**
Figures (showing heights in feet above sea-level)

Magnetic declination about 24 East.

C. O. Sénécal, Geographer and Chief Draughtsman.
G. G. Aitken and A. James, Draughtsmen.

MAP G2 A
(Issued 1912)

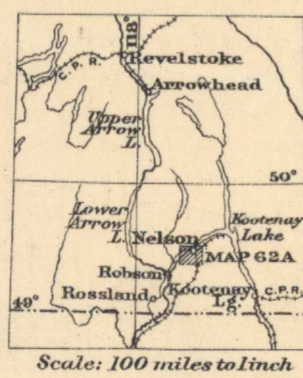
NELSON AND VICINITY
WEST KOOTENAY
BRITISH COLUMBIA



GEOLOGY
GEOLOGICAL SURVEY, PUBLISHED MAP, 1904.
O. E. LEROY, ADDITIONS & CORRECTIONS, 1911.

TOPOGRAPHY
(Control and topography subject to revision.)
GEOLOGICAL SURVEY, PUBLISHED MAP, 1904.
C. W. DRYSDALE, ADDITIONS & CORRECTIONS, 1911.

TOPOGRAPHICAL BASE
RATED GRADE 5



NOT TO BE TAKEN FROM LIBRARY
NE PAS SORTIR DE LA BIBLIOTHÈQUE



1912
62A

Nelson
5.1.2
A, Geol