

Canada
 Department of Mines
 GEOLOGICAL SURVEY

HON. W. TEMPLEMAN, MINISTER; A. P. LOW, DEPUTY MINISTER;
 R. W. BROCK, DIRECTOR.

1911

ECONOMIC GEOLOGY

BRITISH COLUMBIA

LEGEND

Tulameen group
 (limestone & schistose volcanic rocks)

J5
 Eagle granodiorite

Dikes

Veins

Symbols

Geological boundary
 (precisely located)

Geological boundary
 (approximately located)

Geological boundary
 (position assumed)

Dip and strike

LEGEND

Culture

Roads and buildings

Roads not well defined

Trails

Mine tramways

Shafts

Mine tunnels

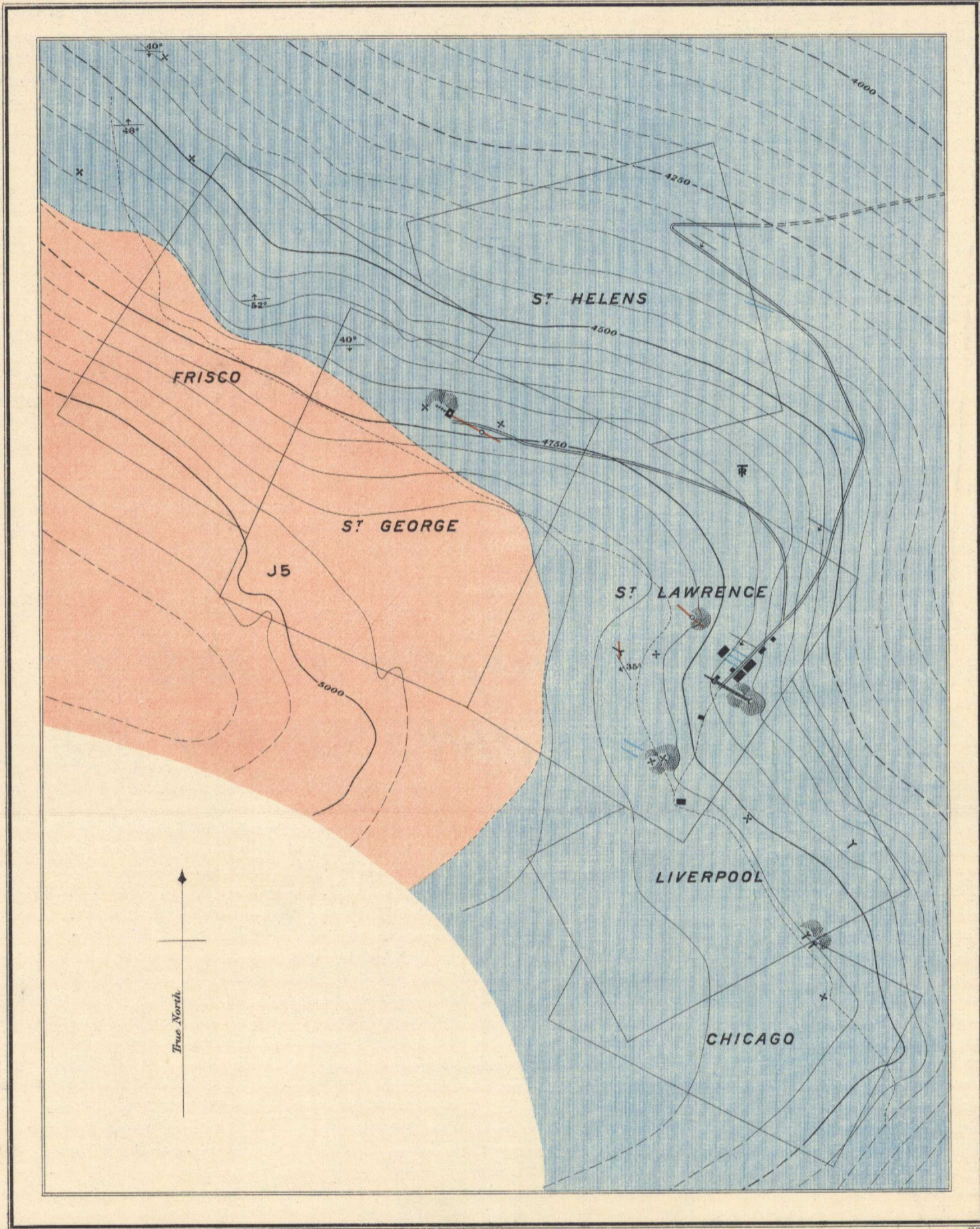
Prospects

Relief

Contours
 (showing land forms and
 elevations above sea-level)
 Interval 50 feet

Contours not well determined

Mine dumps



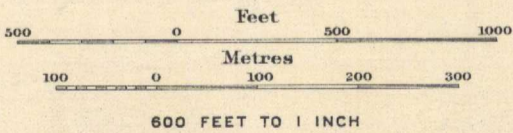
C. O. Sénécal, Geographer and Chief Draughtsman.
 A. M. Gregor, Draughtsman.

MAP 47A

LAW'S MINING CAMP

Near TULAMEEN, B.C.

Scale, $\frac{1}{7200}$



Situation on Bear Creek
 about 7 miles west of
 Tulameen

GEOLOGY
 C. CAMSELL 1909
 TOPOGRAPHY
 (subject to revision)
 C. CAMSELL 1909

NOT TO BE TAKEN FROM LIBRARY
 NE PAS SORTIR DE LA BIBLIOTHÈQUE

To accompany Memoir No. 26



47A 1911

Law's Mining Camp
 5.1.2
 A. Geol.

This map has been produced from a scanned version of the original map
 Reproduction par numérisation d'une carte sur papier