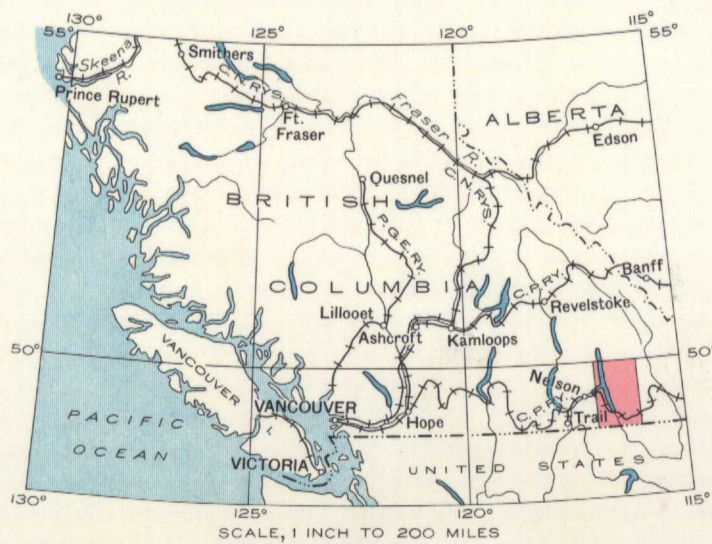
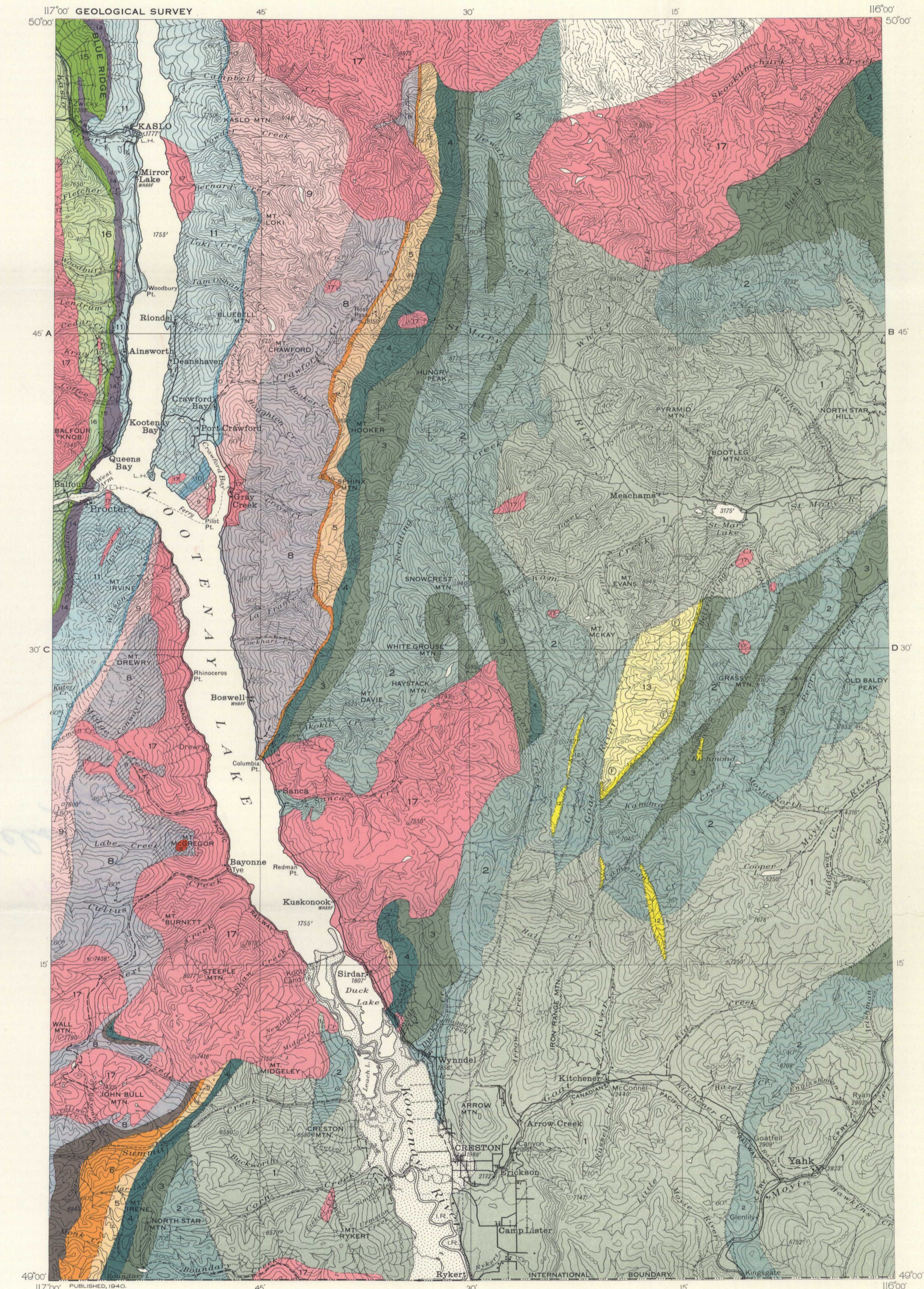


LEGEND

- | | | | |
|--------------------------------|----|----------------------------------|--|
| MESOZOIC AND (7) CENOZOIC | 18 | POST-TRIASSIC | Syenitic intrusives; agglomerate |
| | 17 | | Chiefly granite, granodiorite and quartz diorite |
| MESOZOIC | 16 | SLOCAN SERIES | Slate, argillite, quartzite, limestone; schists |
| | 15 | KASLO SERIES | Lavas, tuffs, breccias; allied intrusives; schists |
| PALAEOZOIC AND (1) MESOZOIC | 14 | UPPER CARBONIFEROUS AND TRIASSIC | Slate, argillite, chert, limestone; schists; some greenstone |
| | | | MILFORD GROUP |
| PALAEOZOIC | 13 | CAMBRIAN | EAGER FORMATION: olive-green, purple and grey shale |
| | 12 | LOWER CAMBRIAN | CRANBROOK FORMATION: silicious, white, rose, purple and grey quartzite and conglomerate |
| PALAEOZOIC | 11 | WINDERMERE | LARDEAU SERIES |
| | 10 | LOWER CAMBRIAN | BADSHOT FORMATION: magnesian limestone |
| PROTEROZOIC (LATE PRECAMBRIAN) | 9 | | HAMILL SERIES |
| | 8 | | HORSETHIEF CREEK SERIES |
| | 7 | | IRENE VOLCANIC FORMATION: sheared, andesitic volcanic rocks |
| | 6 | | TOBY FORMATION: conglomerate |
| | 5 | PURCELL | UPPER PURCELL |
| | 4 | | MOUNT NELSON FORMATION: laminated argillite, magnesian limestone, quartzite |
| | 3 | | DUTCH CREEK FORMATION: laminated argillite, magnesian limestone, quartzite |
| | 2 | | LOWER PURCELL |
| | 1 | | KITCHENER-SIYEH FORMATION: chiefly vari-coloured magnesian limestone and argillite; calcareous quartzite |
| | | | CRESTON FORMATION: green, purple and grey, argillaceous quartzite; some argillite |
| | | | ALDRIDGE FORMATION: grey, rusty-weathering, argillaceous quartzite and argillite |

- Areas of intense metamorphism with many granitic sills and dykes
- Heavily drift-covered area
- Fossil locality
- Bedding (vertical, inclined, horizontal, overturned)
- Fault
- Glacial striae
- Road and buildings
- Road not well travelled
- Trail
- Church
- School
- Post Office
- Mine tunnel
- Lighthouse
- Triangulation Station
- International boundary
- Indian Reserve boundary
- Stream (position approximate)
- Intermittent lake and stream
- Contours (interval 500 feet)
- Contours (position approximate)
- Height in feet above Mean sea-level
- Geology by H.M.A. Rice, 1936, 1937, and 1938.
- Surveys and topography by the Topographical Survey, 1936. Cartography by the Drafting and Reproducing Division, 1940.



MAP LIBRARY / CARTOTHEQUE

NOT TO BE TAKEN FROM LIBRARY
NE PAS SORTIR DE LA BIBLIOTHEQUE

603A