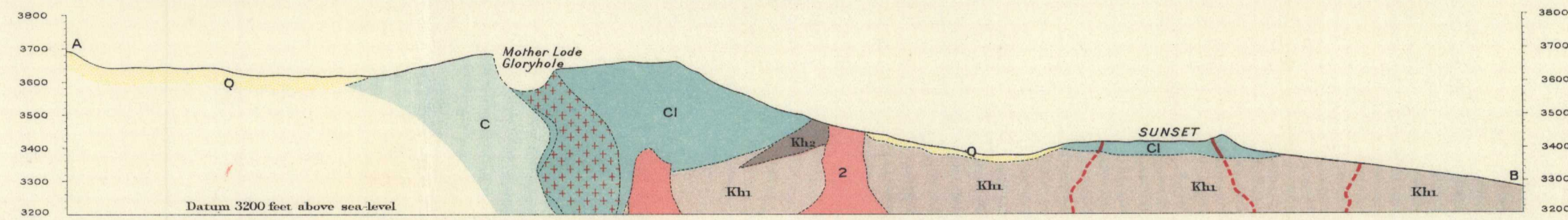


Canada  
Department of Mines  
GEOLOGICAL SURVEY

HON. W. B. NANTSEL, MINISTER; A. P. LOW, DEPUTY MINISTER;  
R. W. BROCK, DIRECTOR.

1911



Structural section along line A B  
Scale, horizontal and vertical, 400 feet to 1 inch.

ECONOMIC GEOLOGY

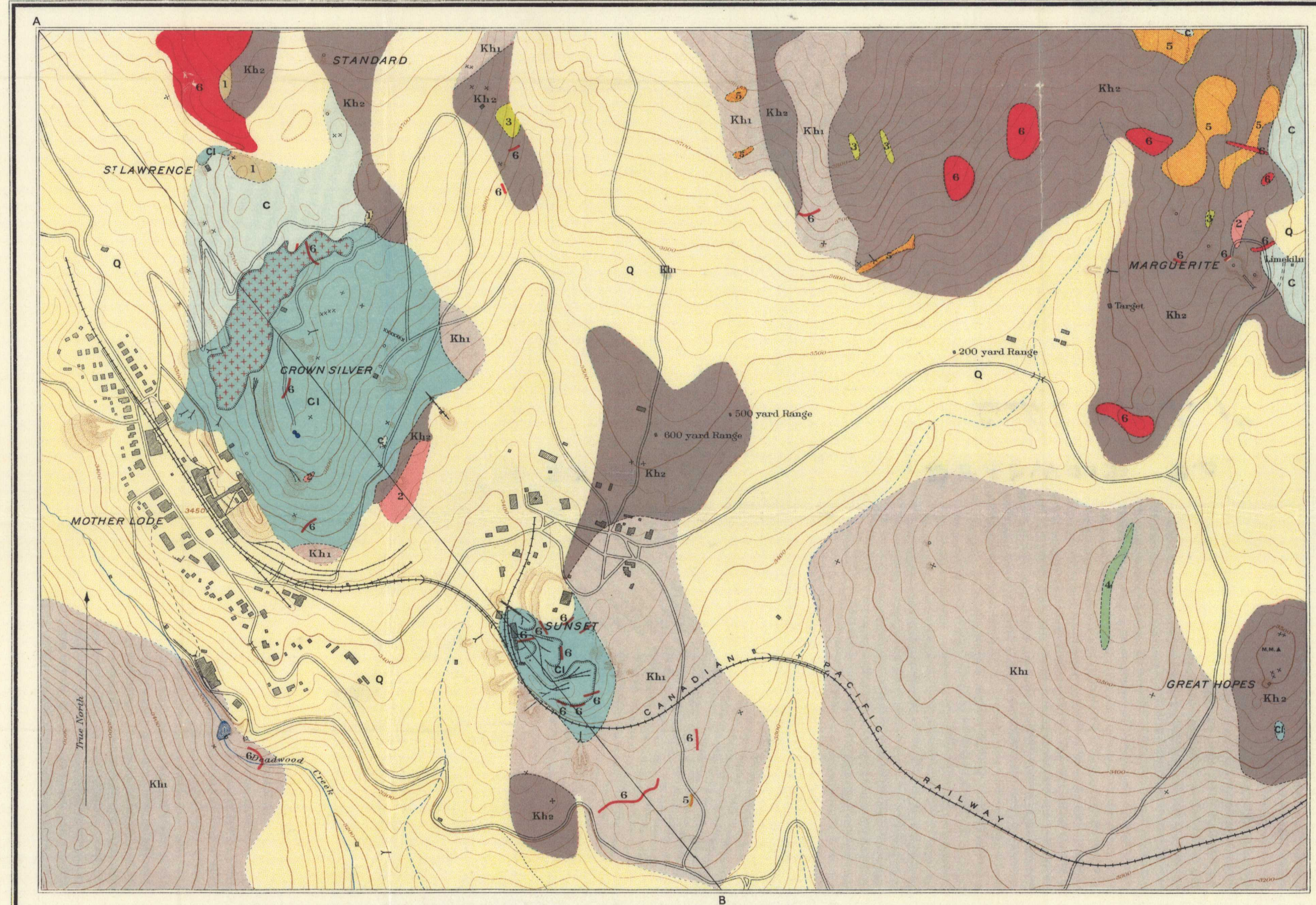
BRITISH COLUMBIA

**LEGEND**

QUATERNARY	Q	Clay, sand, gravel
TERTIARY	6	Pulaskite porphyry
	5	Monzonite porphyry
MESOZOIC	4	Olivine basalt
	3	Hornblende porphyrite
PALEOZOIC	2	Granodiorite
	1	Quartz porphyrite
	Cl	Brooklyn formation (quartzified zone (zone of contact metamorphism))
	C	Brooklyn formation (crystalline limestone)
	Kh2	Knob Hill group (porphyroid till zone)
	Kh1	Knob Hill group (chert till zone)

**Symbols**

- Mother Lode ore body
- Glacial striae
- Geological boundary (delineated within an error of 20 feet)
- Geological boundary (assumed)



**LEGEND**

<b>Culture</b>	<b>Culture (Continued)</b>
Roads and buildings	Water tanks
Roads not well defined	Crib work
Railways	Mineral monuments
Trails	Glory holes
Mine tramways	Water
Elevated tramways	Streams and ponds
Bridges	Watercourses with intermittent flow
Shaft houses	<b>Relief</b>
Shafts	Contours (showing land forms and elevations above sea level) Interval 20 feet
Tunnels	Depression contours
Prospects	Mine dumps
Dams	Figures showing heights in feet above sea level

C. O. Senesal, Geographer and Chief Draughtsman.  
S. G. Alexander, and G. E. Prud'homme, Draughtsmen.

MAP 30 A

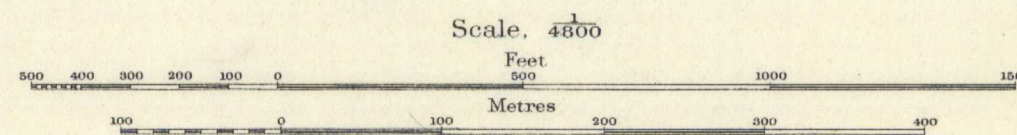
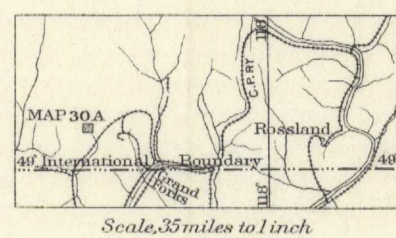
**MOTHER LODGE AND SUNSET MINES**  
DEADWOOD  
BRITISH COLUMBIA

**GEOLOGY**

O. E. LEROY, (ECONOMIC) 1910.  
C. W. DRYSDALE, (AREAL) 1910.

**TOPOGRAPHY**

W. H. BOYD, (IN CHARGE) 1910.  
W. E. LAWSON, 1910.  
A. C. T. SHEPPARD, 1910.



400 FEET TO 1 INCH

To accompany Memoir No. 19

**NOT TO BE TAKEN FROM LIBRARY  
NE PAS SUTIRER DE LA BIBLIOTHEQUE**

MOTHER Lode + SUNSET MINES  
5.1.2  
H. 208. MAP No. 30A Copy 2

30A