



Geological Survey, Canada.

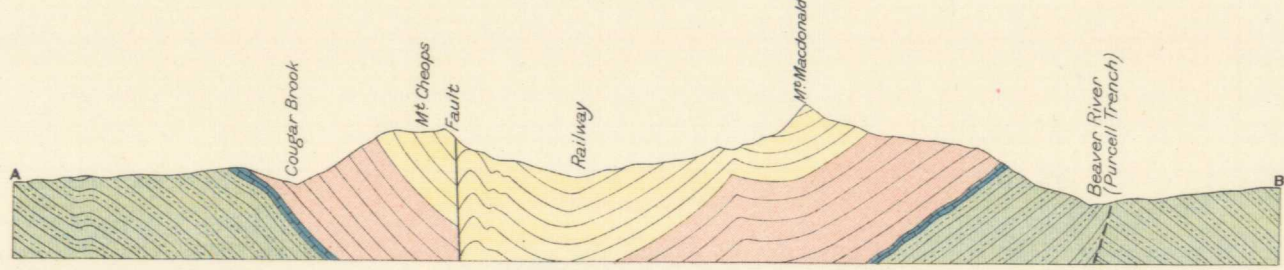
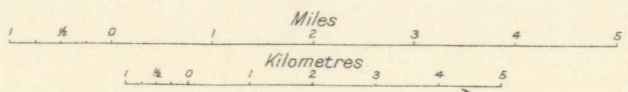
1449

Legend

- Glacier and snow-field
- Sd Sir Donald quartzite
- R Ross quartzite
- Nakimu limestone
- Nakimu limestone (mapped approximately)
- C Cougar formation (quartzite, metargillite)
- Am Phyllitic metargillite (Youngest member of Albert Canyon division of Selkirk series)

Note—Faults not shown on the map

Glacier



Section along line AB

To accompany Memoir by R. A. Daly

NOT TO BE TAKEN FROM LIBRARY
NE PAS SORTIR DE LA BIBLIOTHÈQUE

★
1449

This map has been produced from a scanned version of the original map
Reproduction par numérisation d'une carte sur papier