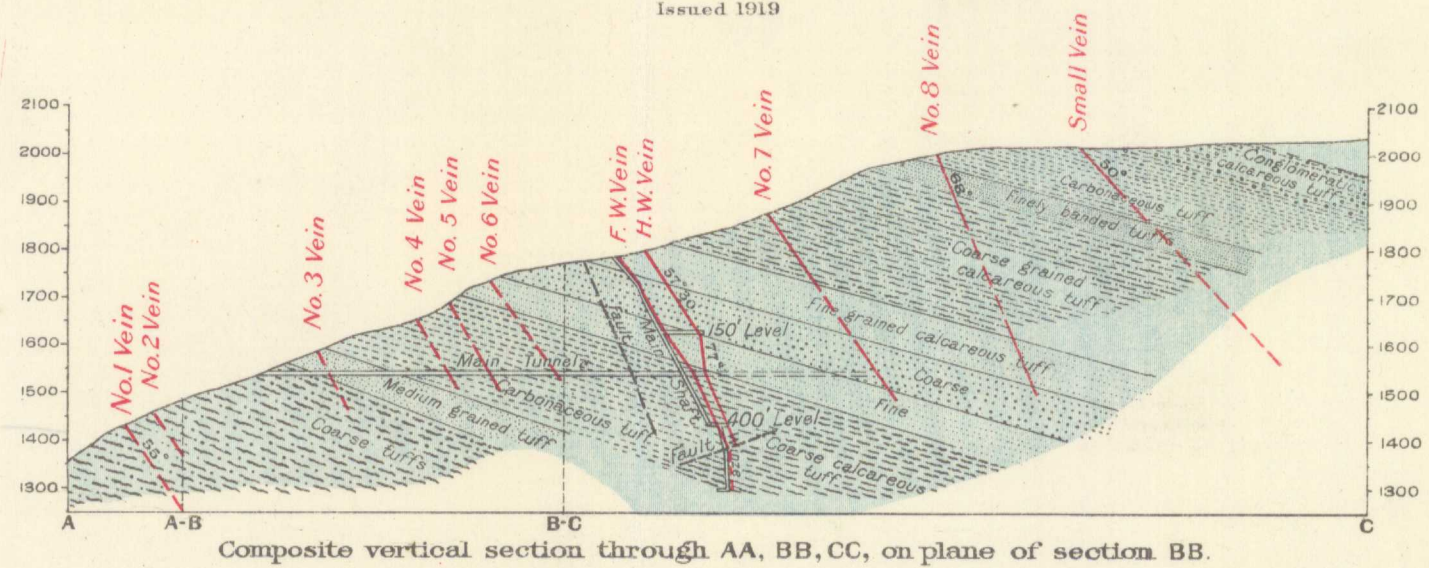


Canada  
Department of Mines

HON. MARTIN BURRELL, MINISTER; R.G.M. CONNELL, DEPUTY MINISTER.

GEOLOGICAL SURVEY  
WILLIAM McINNIS, DIRECTING GEOLOGIST.

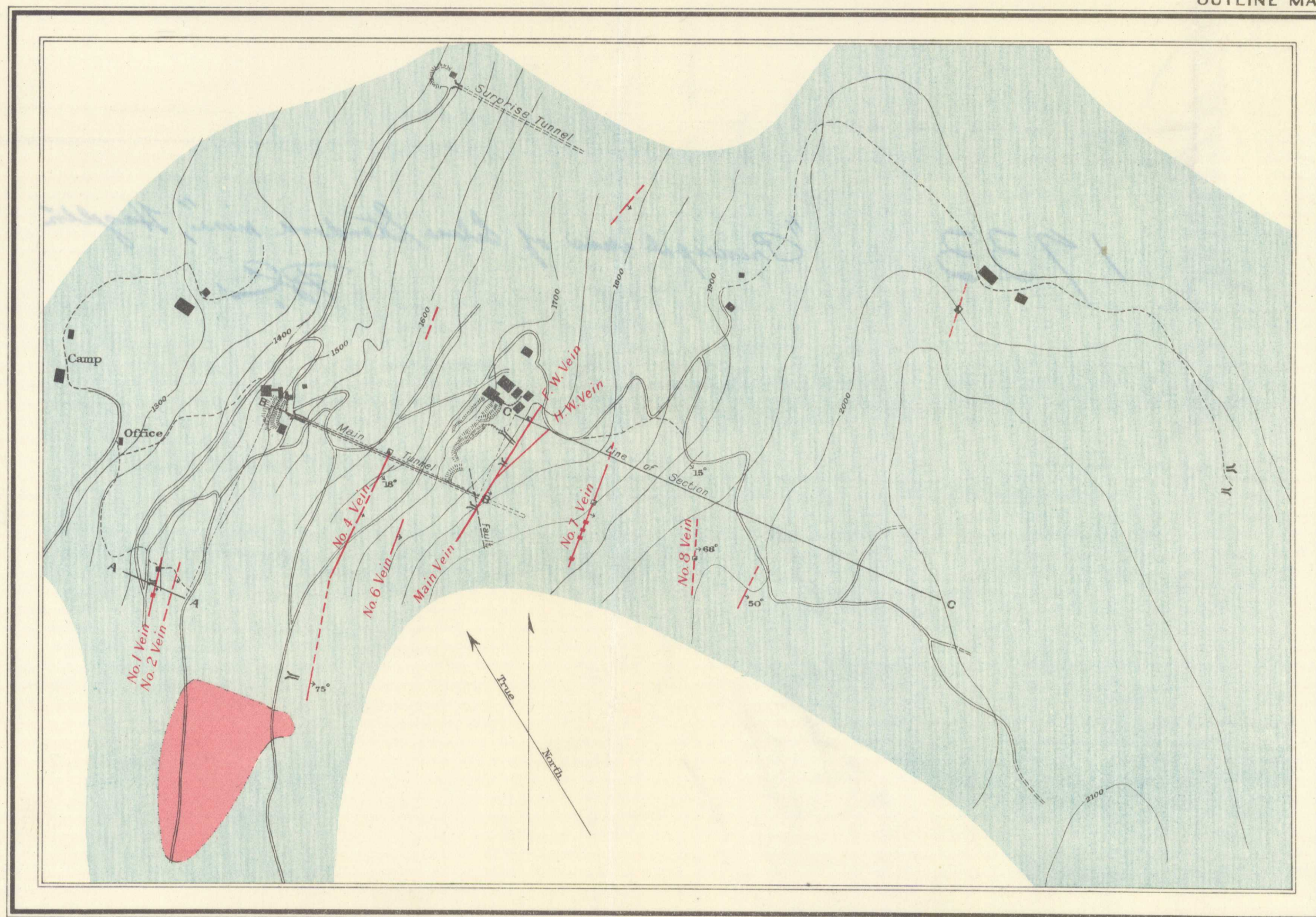
Issued 1919



OUTLINE MAP

LEGEND

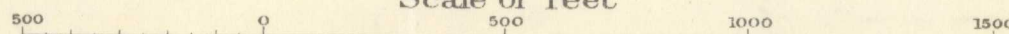
- LATE JURASSIC { Hazelton series (mostly sedimentary tuffs)
- POST-HAZELTON SERIES { Granodiorite-porphry (small boss)
- Vein with open cut
- Geological boundary
- Geological boundary (assumed)
- Dip and strike
- Roads and buildings
- Trails
- Mine tramways
- Tunnels
- Shafts
- Underground workings
- Contours (showing landforms and elevations above sea-level)
- Mine dumps



C.O. Senécal, Geographer and Chief Draughtsman  
J.O. Fortin, Draughtsman

PRINCIPAL VEINS ON THE SILVER STANDARD MINE, HAZELTON, BRITISH COLUMBIA.

Scale of Feet



To accompany Memoir by J.J. O'Neill.

Publication No. 1733  
NOT TO BE TAKEN FROM LIBRARY  
NE PAS SORTIR DE LA BIBLIOTHÈQUE

1733