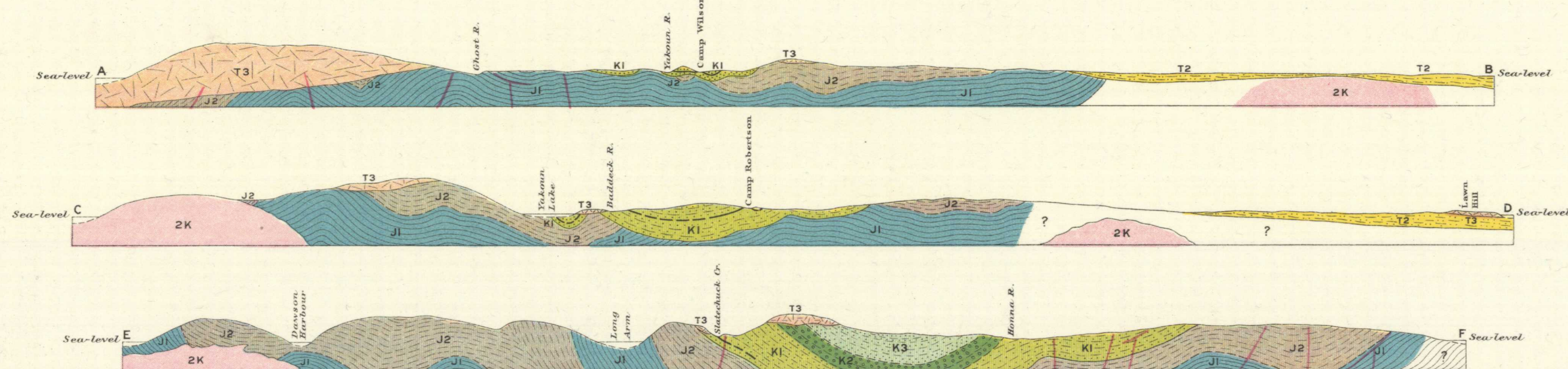


Canada Department of Mines

HON. P. E. BLONDIN, MINISTER; R. G. MCCONNELL, DEPUTY MINISTER

GEOLOGICAL SURVEY



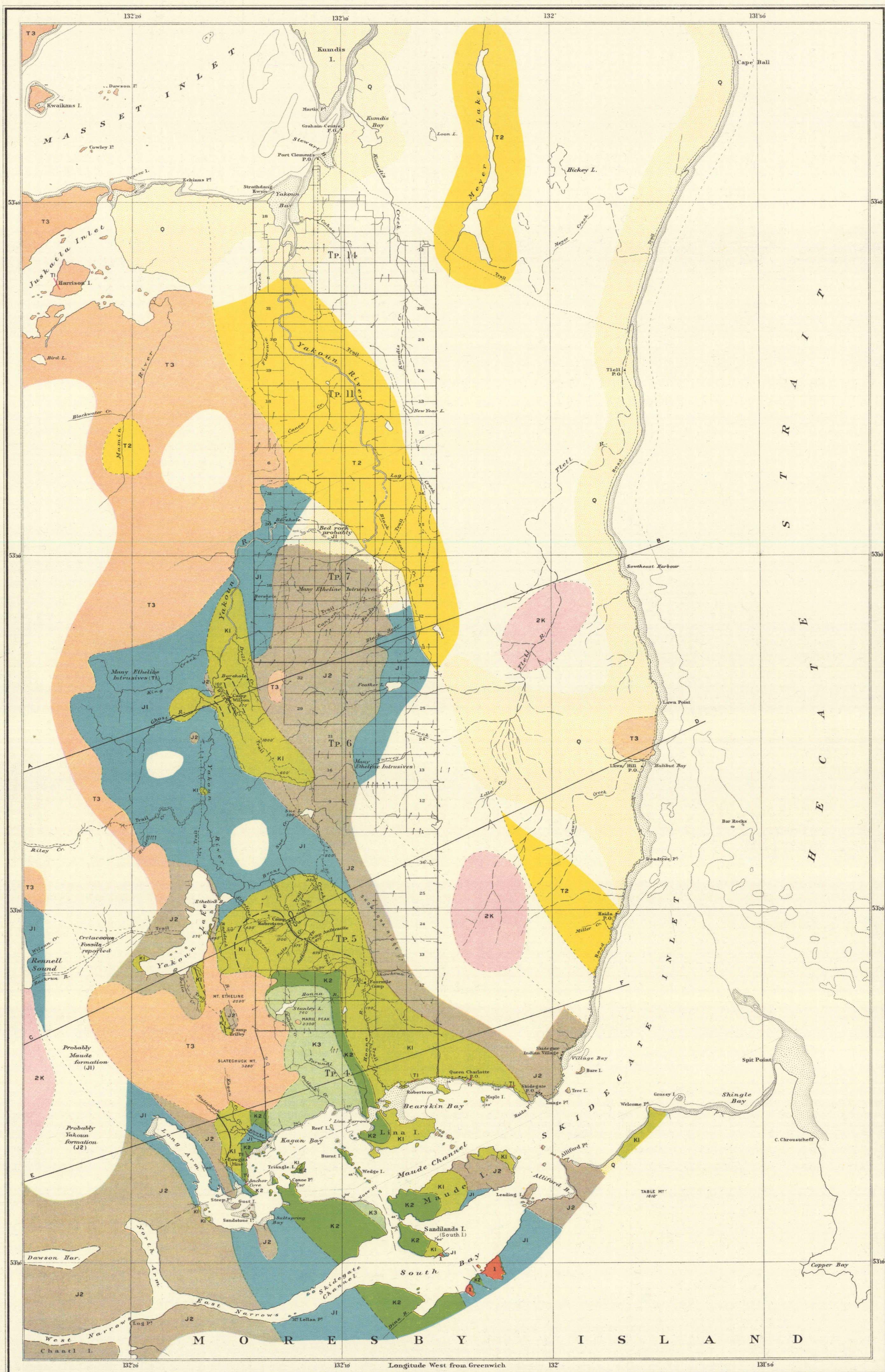
Sections along lines AB, CD and EF.
Horizontal and vertical scale, same as map.

LEGEND

- QUATERNARY**
- PLEISTOCENE AND RECENT**
 - Q Stratified gravel, sand and clay; muskeg.
 - PLIOCENE - MIOCENE (?)**
 - T3 Masset formation
Basalt flows and agglomerates.
 - T2 Skonun formation
Sandstone, shale and conglomerate, with lignite in part unconsolidated.
 - MIOCENE**
 - Eocene (?)**
 - T1 Etheline formation
Diatomite and sandstone, with siltstone and shale, and siltstone of Masset formation on Harrison Island, Jukasta Inlet.
 - UPPER CRETACEOUS**
 - K3 Sladgate formation
Sandstone and shale.
 - K2 Honna formation
Conglomerate and sandstone.
 - K1 Haida formation
Sandstone and shale, with siltstone and shale.
 - MESozoIC**
 - UPPER JURASSIC**
 - 2K Kano quartz diorite
 - 1 Diabase
 - MIDDLE JURASSIC**
 - J2 Yakoun formation
Basalt agglomerates and minor flows.
 - LOWER JURASSIC - TRIASSIC (?)**
 - J1 Maude formation
Banded argillites and calcareous rocks.

Symbols

- Geological boundary (position determined)
- Geological boundary (probable error of location less than half a mile)
- Geological boundary (probable error of location less than one mile)
- Geological boundary (position assumed)
- Fault (position determined)
- Fault (probable error of location less than one mile)
- Fault (position assumed)
- Outcrop of coal horizon
- Borehole
- Elevation in feet above sea-level
- Dip and strike

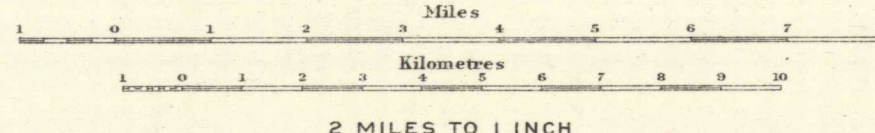


C. D. Senécal, Geographer and Chief Draughtsman.
A. McGregor, Draughtsman.

MAP 177A
(Issued 1916)

Southern portion of GRAHAM ISLAND QUEEN CHARLOTTE ISLANDS BRITISH COLUMBIA

Scale 1:250,000



2 MILES TO 1 INCH

GEOLOGY

J. D. MACKENZIE

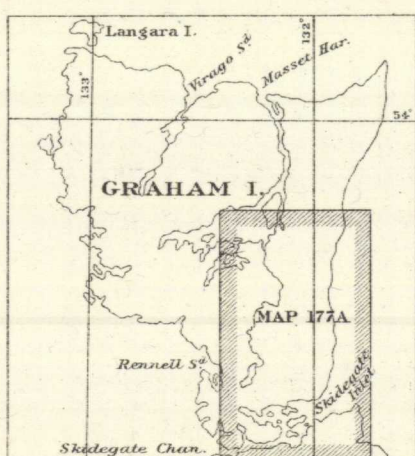
1913, 1914.

GEOGRAPHY

BRITISH ADMIRALTY AND
DEPARTMENT OF THE NAVAL
SERVICE OF CANADA,
DEPARTMENT OF LANDS,
BRITISH COLUMBIA,
J. D. MACKENZIE.

PUBLISHED CHARTS,
TOWNSHIP PLANS
AND SURVEYS.
1913, 1914.

To accompany Memoir by J. D. Mackenzie.



Scale: 35 Miles to 1 inch.

NOT TO BE TAKEN FROM LIBRARY
NE PAS SOUTIR DE LA BIBLIOTHÈQUE