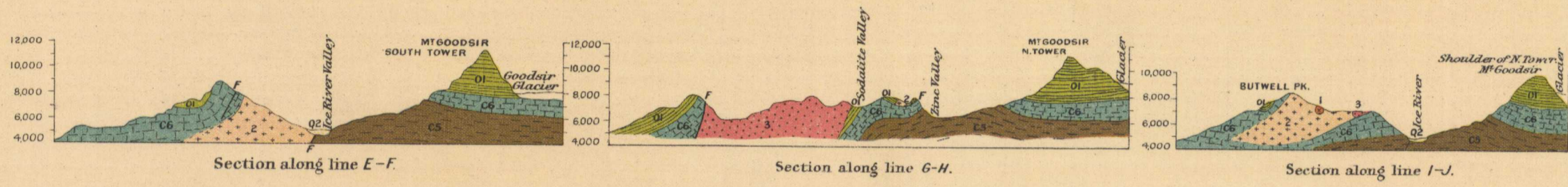
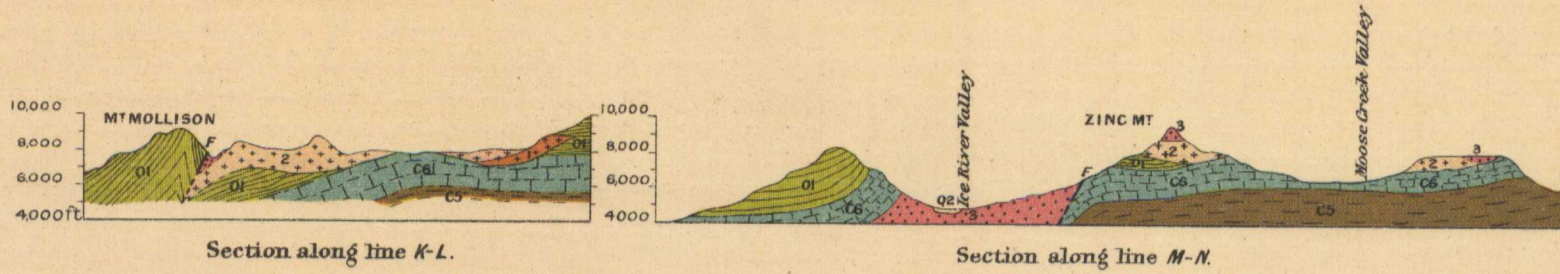


Canada
Department of Mines

HON. L. CODERRE, MINISTER; R. G. M^cCONNELL, DEPUTY MINISTER.

GEOLOGICAL SURVEY



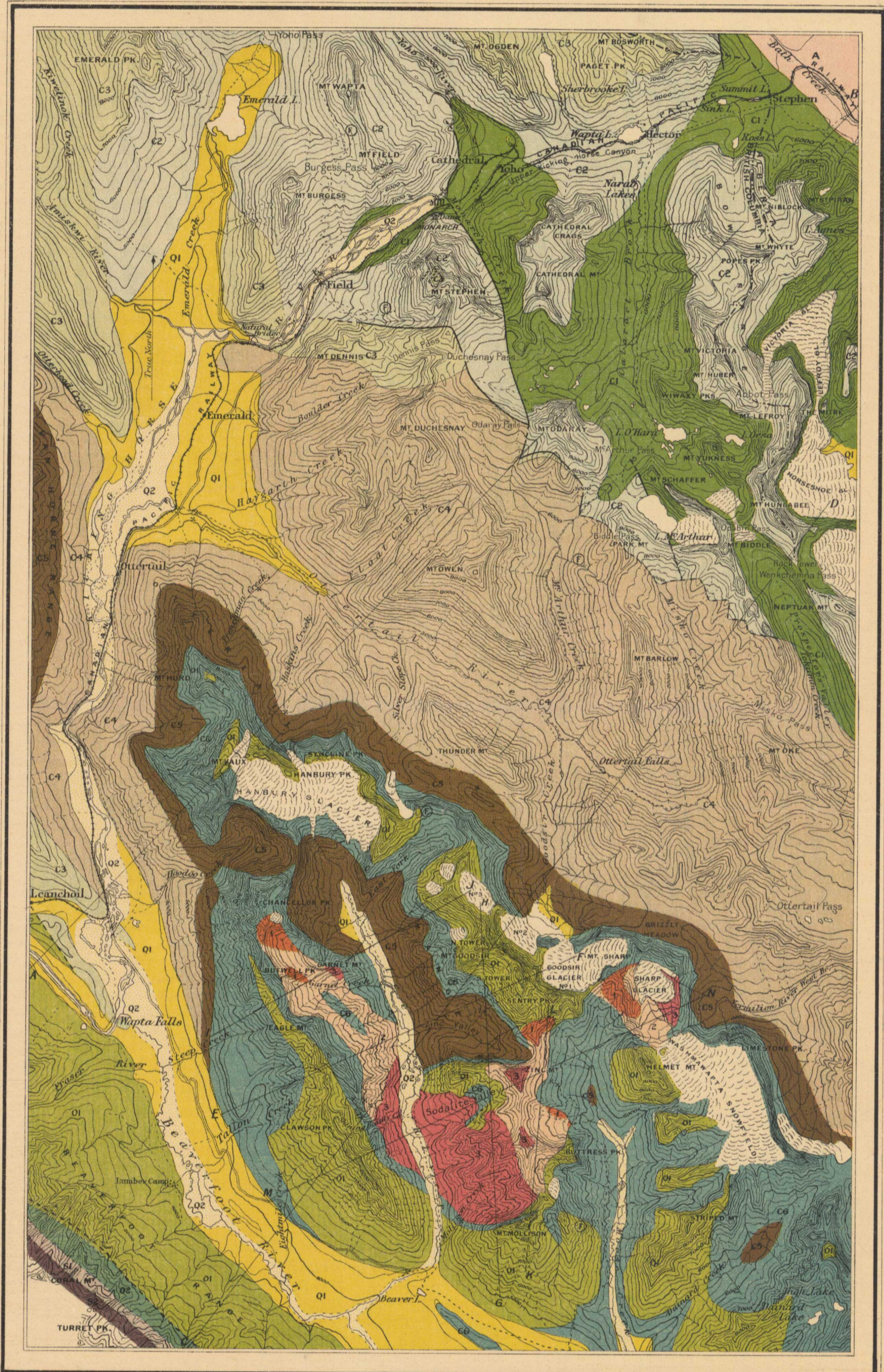
LEGEND

Sedimentary Rocks

QUATERNARY	Q2	Alluvial
	Q1	Glacial
SILURIAN	S2	Halysites beds
	S1	White quartzite
ORDOVICIAN	O2	Oraptite shales
	O1	Goodsir formation
PALAEZOIC	C6	Oterral formation
UPPER CAMBRIAN	C5	Chancellor formation
	C4	Chancellor formation (sheared zone)
	C3	Shechook, Paget, and Bosworth formations
MIDDLE CAMBRIAN	C2	Eldon, Stephen, and Cathedral formations
LOWER CAMBRIAN	C1	Whyte, St. Ewan, Lake Louise, and Fairview formations
PRE-CAMBRIAN	A	Pre-Cambrian
POST-CRETACEOUS (?)	3	Leucocratic types (nephelitic syenite, etc.)
	2	Transition types (quartz, etc.)
	1	Melanocratic types (pyroxenite, etc.)

Symbols

- Fault (observed)
- Fault (position assumed)
- Geological boundary (position determined)
- Geological boundary (position assumed)
- Fossil locality



LEGEND

Culture

- Railways
- Railway tunnels
- Roads
- Trails
- Aerial tramways
- Bridges
- Mines
- Prospects

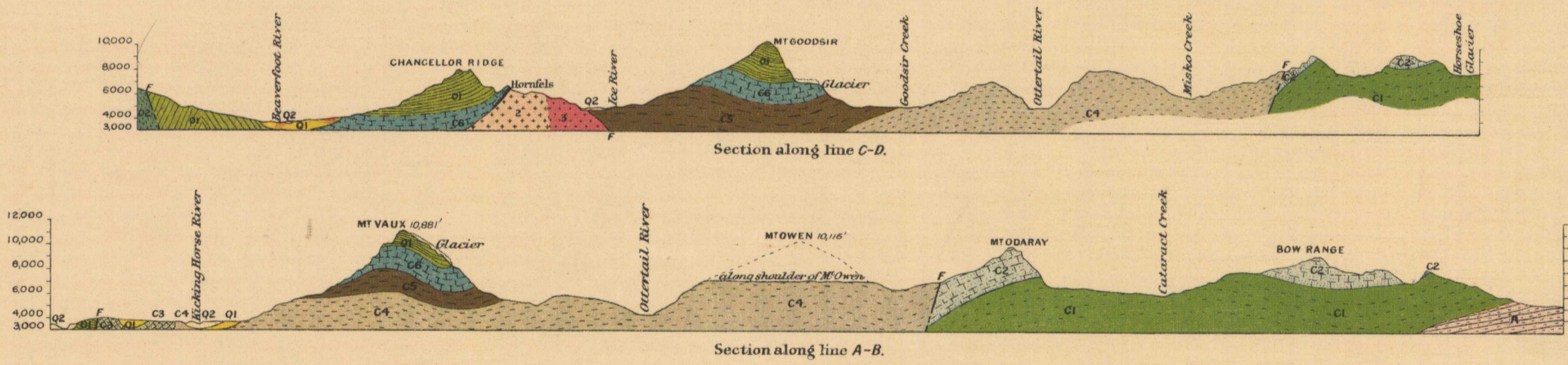
Water

- Rivers and lakes
- Streams
- Watercourses (with intermittent flow)
- Glaciers

Relief

- Contours (showing land forms and elevations above sea level; interval 250 feet)

Magnetic declination about 25° East.



MAP 142A
(Issued 1919)

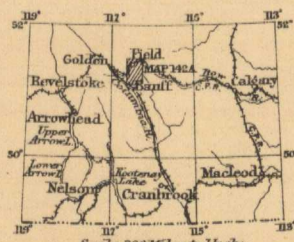
FIELD
KOOTENAY DISTRICT
BRITISH COLUMBIA

GEOLOGY
J. A. ALLAN 1910, 1911.
TOPOGRAPHY
DEPARTMENT OF THE INTERIOR,
PUBLISHED MAPS, 1912.
(TOPOGRAPHICAL SURVEY'S BRANCH)

Scale 1:62,500



2 MILES TO 1 INCH



To accompany Memoir by J. A. Allan.

NOT TO BE TAKEN FROM LIBRARY
NE PAS SORTIR DE LA BIBLIOTHÈQUE



142A

Field
5-12
A. Geol.

This map has been produced from a scanned version of the original map
Reproduction par numérisation d'une carte sur papier