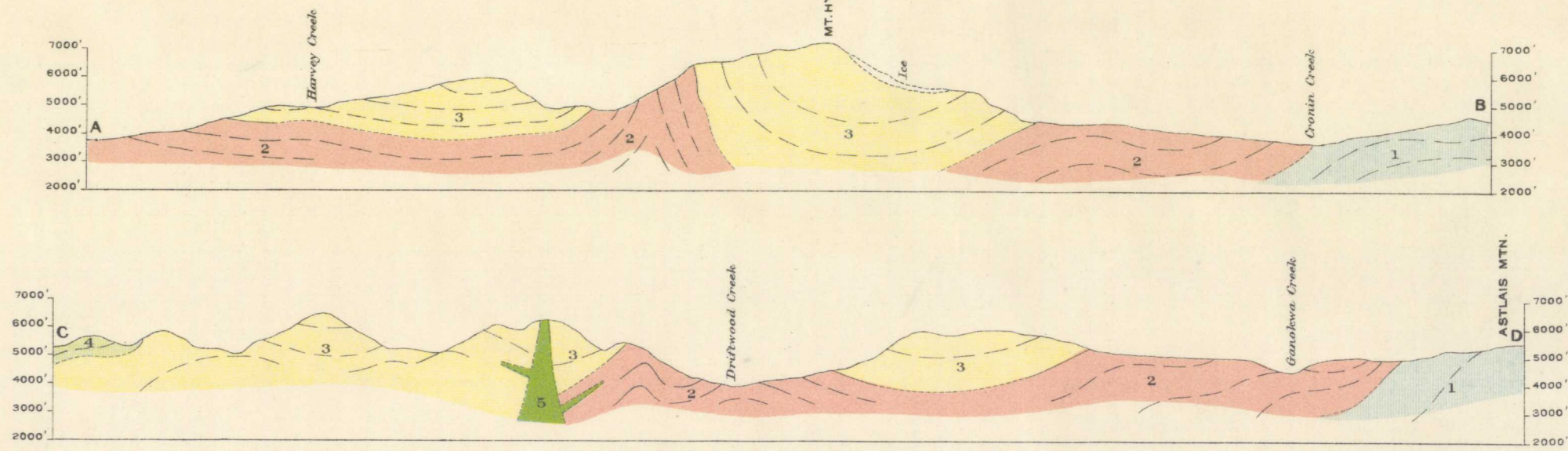


Canada  
Department of Mines

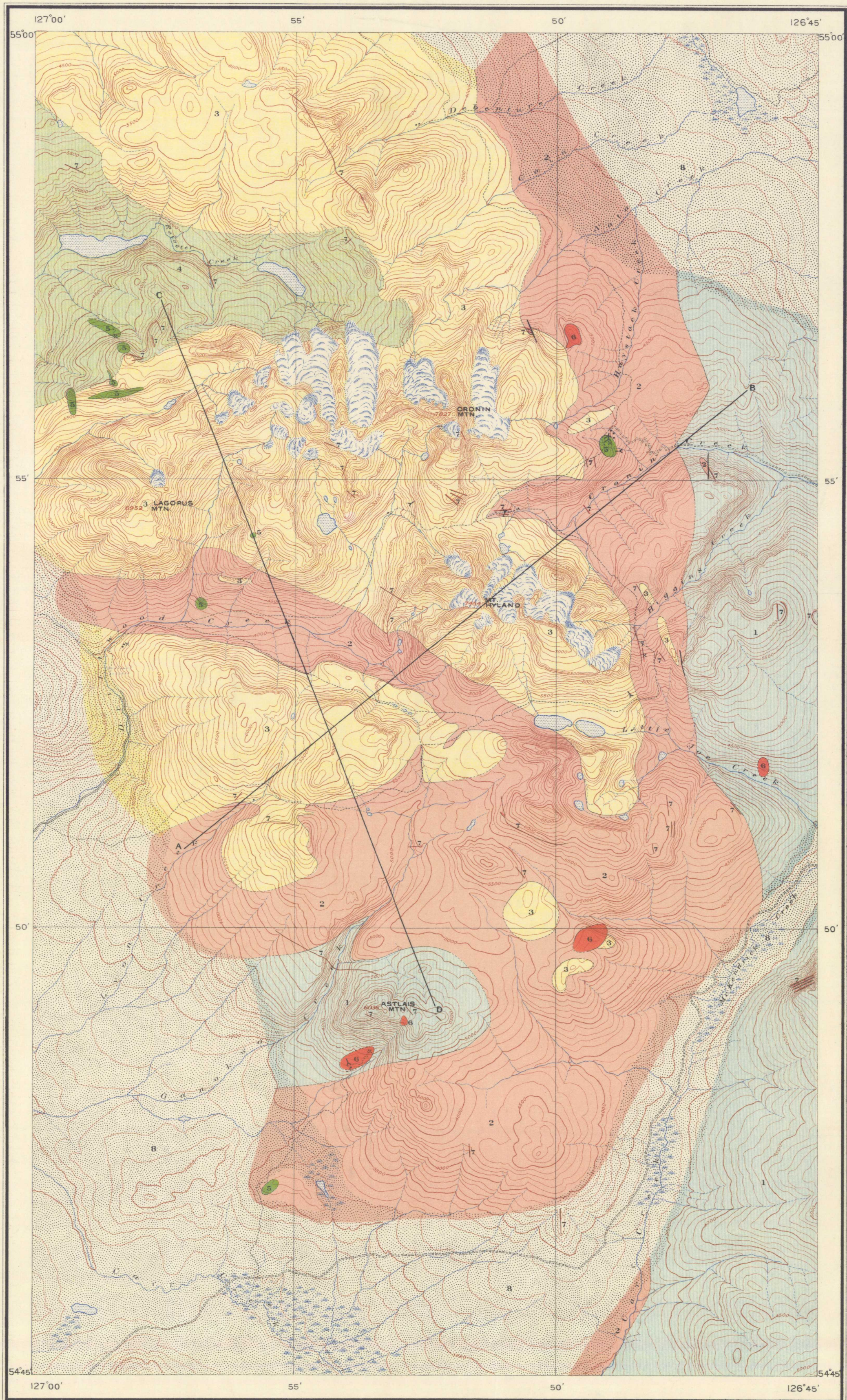
HON. CHARLES STEWART, MINISTER; CHARLES CAMSELL, DEPUTY MINISTER.

GEOLOGICAL SURVEY  
W. H. COLLINS, DIRECTOR.

Issued 1925



Structural sections along lines A B, and C D  
Scale, horizontal and vertical, as 500



LEGEND

- QUATERNARY
- RECENT
- 8 Drift covered area
  - 7 Dykes of quartz diorite, quartz porphyry, lamprophyre, and rhyolite
  - 6 Diorite and quartz diorite stocks
- MESOZOIC
- JURASSIC
- HAZELTON GROUP
- 5 Quartz porphyry and rhyolite intrusions
  - 4 Interbedded tuffs, argillites, and quartzites
  - 3 Andesite, rhyolite, porphyrite, and related tuffs and breccias
  - 2 Argillite, quartzite
  - 1 Tuff, breccia, andesite
- Symbols
- Geological boundary (defined)
  - Geological boundary (approximate)
  - Fault

LEGEND

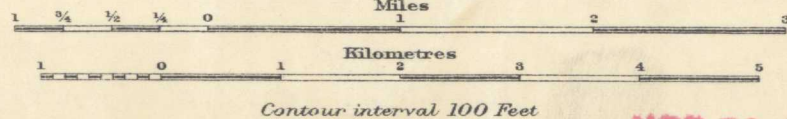
- Roads and buildings
  - Road not well travelled
  - Trail
  - Mine tunnel
  - Prospect
  - Intermittent stream
  - Marsh
  - Glacier
  - Contours
  - 6952
  - Height in feet
- Elevations referred to Mean sea level

Magnetic declination, 1923.

Publication No 2048

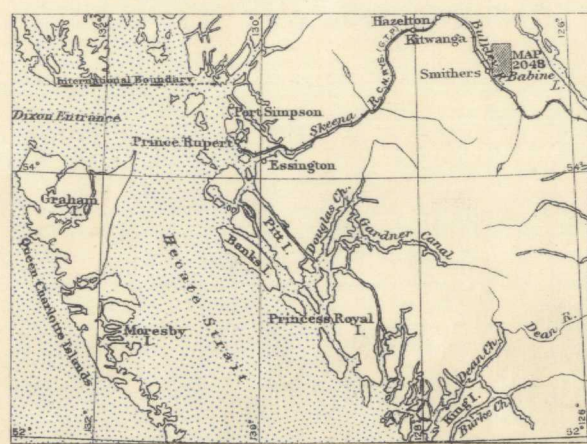
DRIFTWOOD CREEK SHEET  
(WEST HALF)  
COAST DISTRICT  
BRITISH COLUMBIA

Scale, 63,360 or 1 Inch to 1 Mile



GEOLOGY  
Geology by G. Hanson, 1924.

TOPOGRAPHY  
W.H. Boyd, Chief Topographical Engineer.  
Surveys and topography by W.H. Miller, 1923.



Scale, 1 Inch to 100 Miles

NOT TO BE TAKEN FROM LIBRARY  
NE PAS SORTIR DE LA BIBLIOTHÈQUE

PROPERTY OF LIBRARY  
GEOLOGICAL SURVEY OF CANADA  
601 Booth St., Ottawa  
LENT TO: [Signature]  
DATE: [Signature]  
PLEASE RETURN

2048

Driftwood  
5.1.2  
A. Geol  
to accompany report by G. Hanson,  
in Summary Report, Part A. 1924.