

Canada
Department of Mines

HON. L. CODERRE, MINISTER; A. P. LOW, DEPUTY MINISTER;

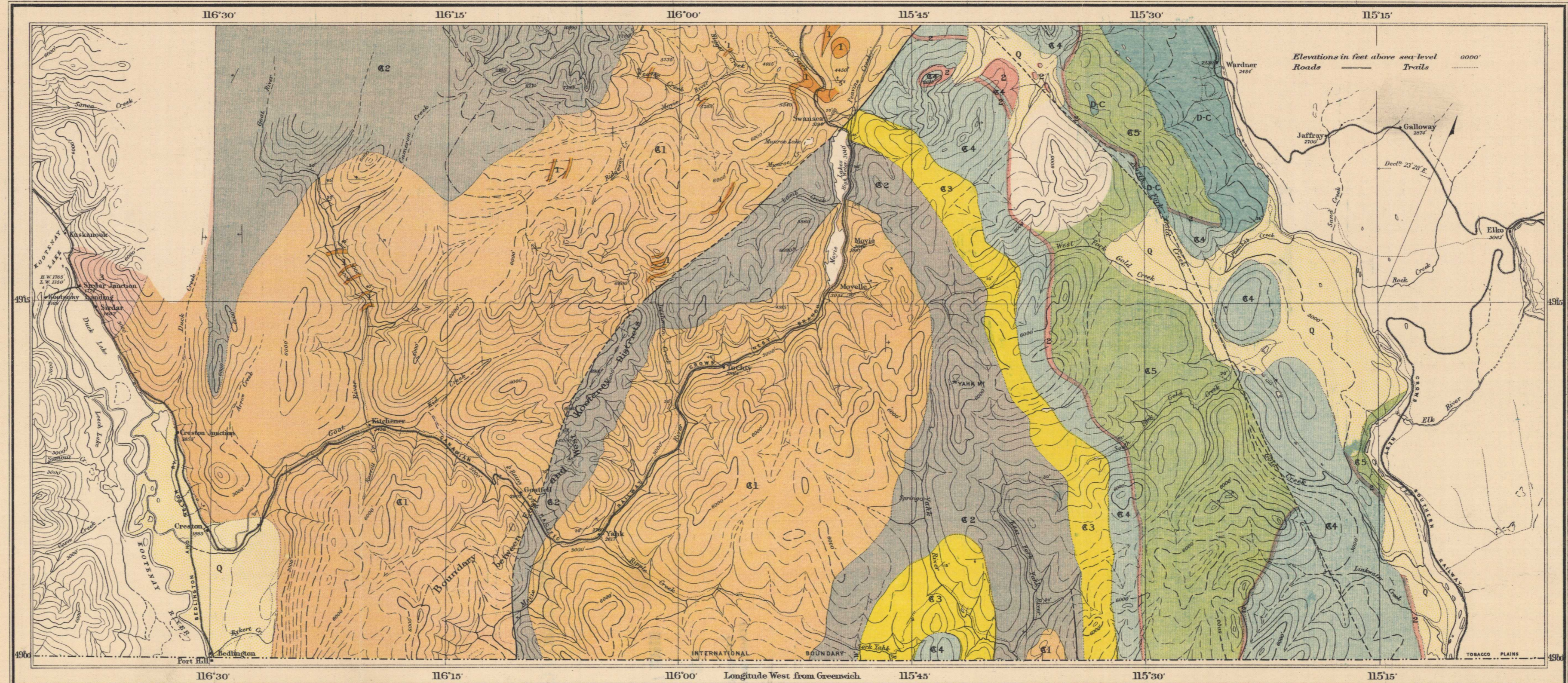
GEOLOGICAL SURVEY

R. W. BROCK, DIRECTOR.

AREAL GEOLOGY

PRELIMINARY MAP

- LEGEND**
- Q Stratified clay and sand
 - JURASSIC (?) 3 Granite and porphyritic granite
 - DEVONIAN AND CARBONIFEROUS D-C Limestone
 - 65 Gateway formation (argillaceous sandstone and siliceous limestone)
 - 2 Purcell lava (basalt and rhyolite)
 - 1 Purcell sills (all gradations from gabbro to granite, intrusive equivalents of Purcell lava)
 - PRE-CAMBRIAN 64 Sivel formation (argillite, some siliceous limestone)
 - 63 Kitchener formation (calcareous quartzite, limestone)
 - 62 Creston formation (greyish weathering argillaceous quartzite and quartzite)
 - 61 Aldridge formation (rusty weathering argillaceous quartzite and quartzite)
- Symbols**
- Geological boundary (position observed)
 - Geological boundary (position inferred)
 - Fault (position observed)
 - Fault (position inferred)
 - Dip and strike
 - Horizontal strata

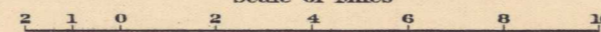


C.O. Senécal, Geographer and Chief Draughtsman.

MAP 99 A
(Issued 1913)

SOUTHERN PORTION OF CRANBROOK MAP-AREA, EAST AND WEST KOOTENAY, BRITISH COLUMBIA.

Scale of Miles



To accompany Summary Report by S.J. Schofield, 1912.

LIBRARY / BIBLIOTHÈQUE MAP LIBRARY / CARTOTHEQUE

Sources of Information
Geology by S.J. Schofield, 1911-1912.
Topography from published map by the
Geological Survey.

APR 12 1969

GEOLOGICAL SURVEY
COMMISSION GÉOLOGIQUE

NOT TO BE TAKEN FROM LIBRARY
NE PAS SORTIR DE LA BIBLIOTHÈQUE

99A

