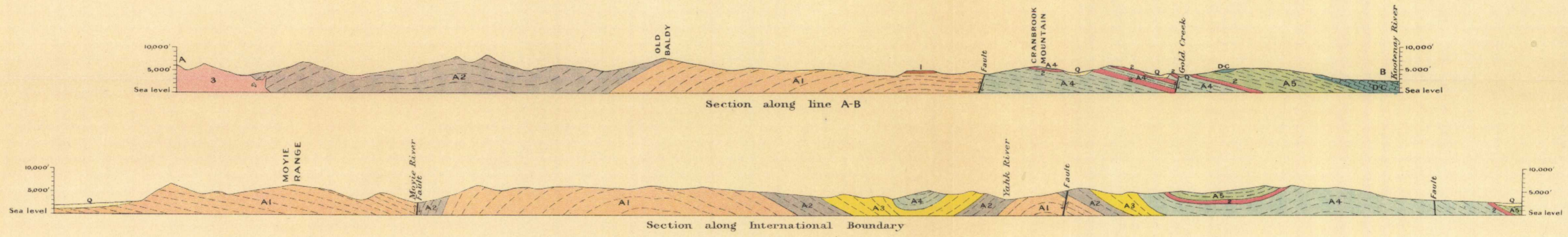


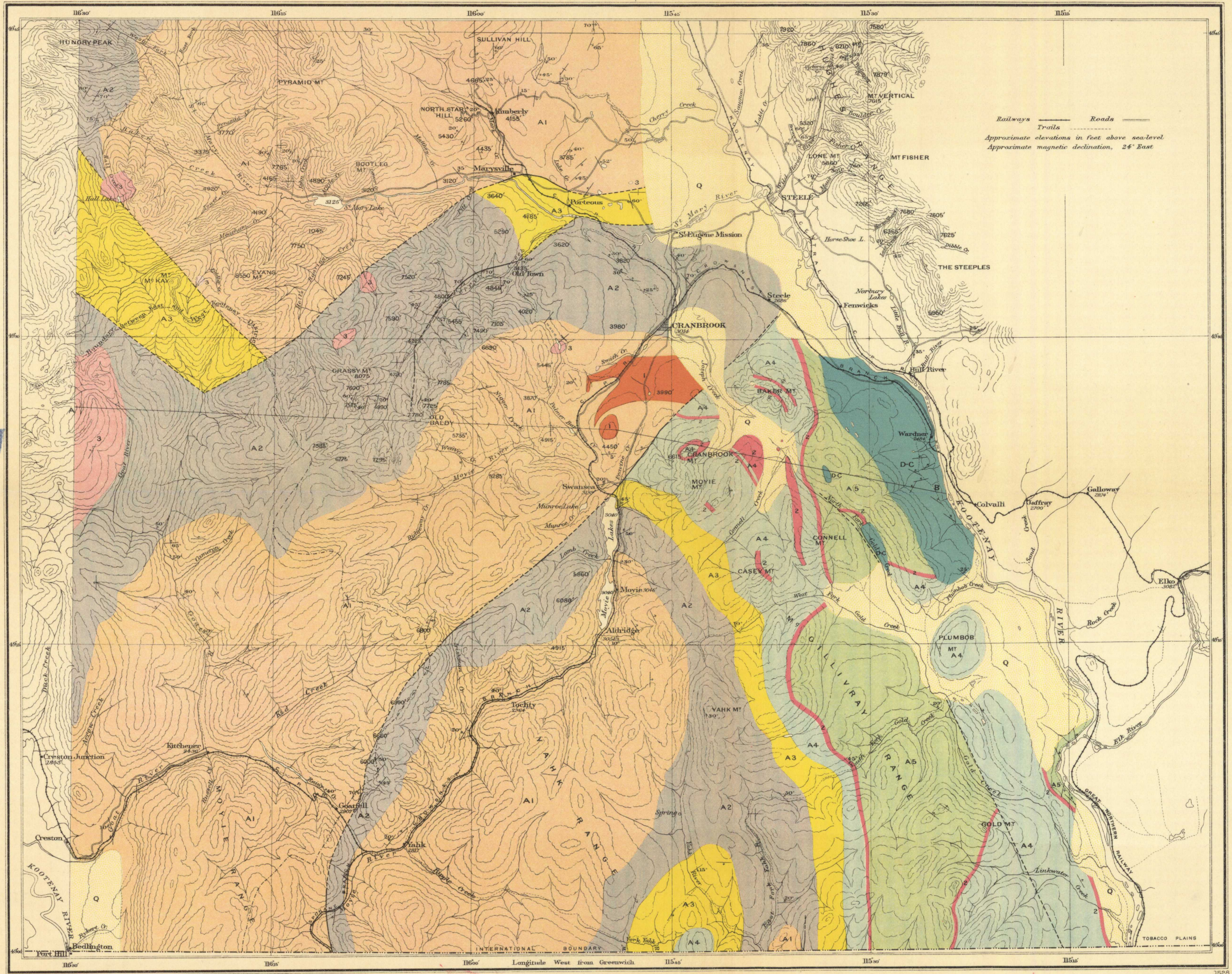
Canada
Department of Mines

HON. L. CODERRE, MINISTER; R. G. McCONNELL, DEPUTY MINISTER.

GEOLOGICAL SURVEY



OUTLINE MAP



LEGEND

- QUATERNARY { Q Stratified clay and sand
- JURASSIC(?) { 3 Granite and porphyritic granite
- DEVONIAN AND CARBONIFEROUS { D-C Limestone
- { A5 Gateway formation (argillaceous siltstones and siliceous limestones)
- { 2 Purcell lava (basalts and rhyolites)
- { 1 Purcell sills (all gradations from gabbro to granite ultrabasic equivalents of Purcell lava)
- PRE-CAMBRIAN { A4 Skech formation (argillaceous siltstones and shales)
- { A3 Kitchener formation (colours quartzite, limestone)
- { A2 Creston formation (rusty weathering argillaceous quartzite and quartzite)
- { A1 Aldridge formation (rusty weathering argillaceous quartzite and quartzite)

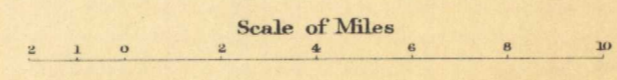
Symbols

- Geological boundary (position observed)
- Geological boundary (position inferred)
- Fault (position observed)
- Fault (position inferred)
- Dip and strike
- Vertical strata
- Horizontal strata

C. O. Senecal, Geographer and Chief Draughtsman
A. J. Jones and A. Bradwood, Draughtsmen

MAP 147 A
(Issued 1915)

CRANBROOK, KOOTENAY DISTRICT, BRITISH COLUMBIA.



NOT TO BE TAKEN FROM LIBRARY
NE PAS SORTIR DE LA BIBLIOTHÈQUE

To accompany Memoir by S. J. Schofield.

