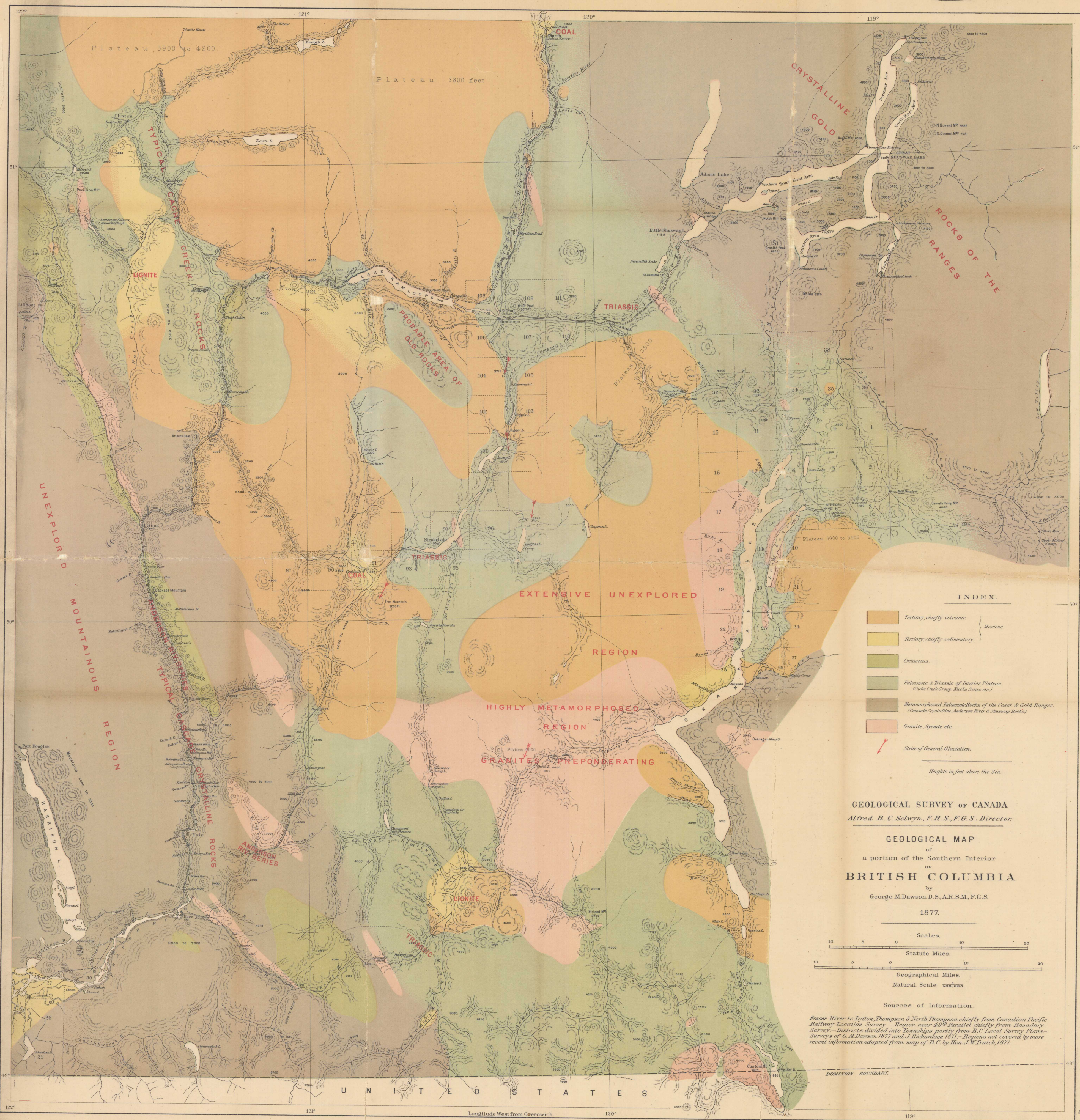


92 East 12

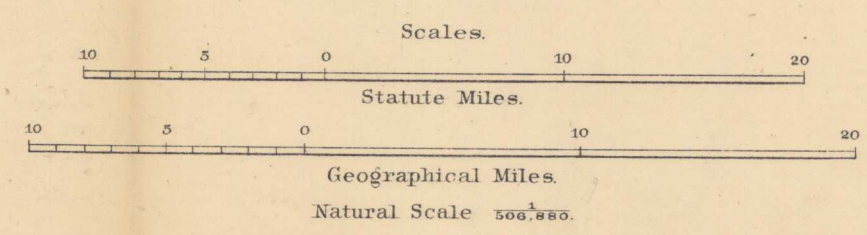


INDEX.

[Orange box]	Tertiary, chiefly volcanic.	} Miocene.
[Yellow box]	Tertiary, chiefly sedimentary.	
[Green box]	Cretaceous.	
[Light Green box]	Paleozoic & Triassic of Interior Plateau. (Coho Creek Group, Nicola Series etc.)	
[Dark Green box]	Metamorphosed Paleozoic Rocks of the Coast & Gold Ranges. (Cascade Crystalline, Anderson River & Shuswap Rocks.)	
[Pink box]	Granite, Syenite, etc.	
[Red arrow]	Striae of General Glaciation.	

GEOLOGICAL SURVEY OF CANADA
 Alfred R. C. Selwyn, F.R.S., F.G.S. Director.

GEOLOGICAL MAP
 of
 a portion of the Southern Interior
 OF
 BRITISH COLUMBIA
 by
 George M. Dawson D.S., A.R.S.M., F.G.S.
 1877.



Sources of Information.

Fraser River to Lytton, Thompson & North Thompson chiefly from Canadian Pacific Railway Location Survey - Region near 49° Parallel chiefly from Boundary Survey - Districts divided into Townships partly from B.C. Local Survey Plans - Surveys of G.M. Dawson 1877 and J. Richardson 1871 - Regions not covered by more recent information adapted from map of B.C. by Hon. J.W. Trutch, 1871.

DOMINION BOUNDARY

UN I T E D S T A T E S

Longitude West from Greenwich.

82 E. L. M.
 92 H. I. P.

G
 3401
 .CS
 1856
 C4
 omme

127 C1