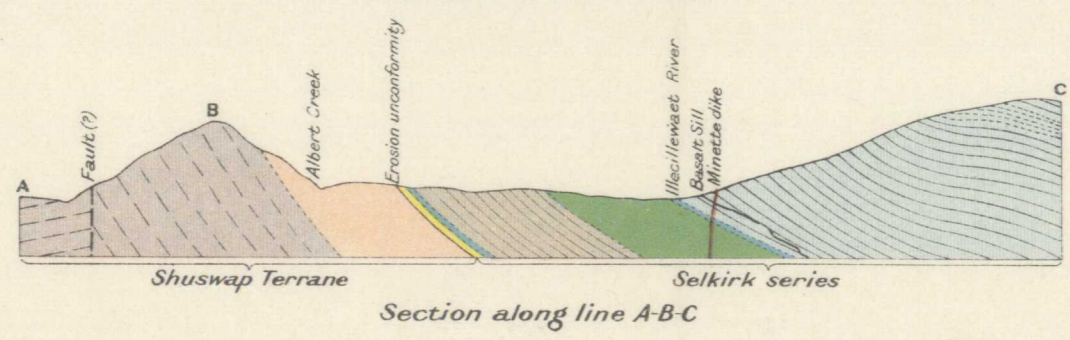
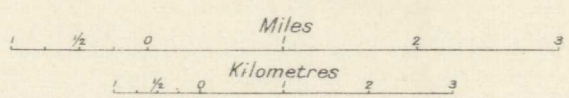


- Legend**
- Vesicular basalt sill
  - Minette dike
  - Laurie formation; chiefly metargillite
  - Quartzite member of Laurie formation
  - Illecillewaet quartzite
  - Moose metargillite
  - Limestone
  - Basal quartzite (arkose)
  - Sill of biotite granite (orthogneiss, member of Shuswap terrane)
  - Shuswap complex (chiefly igneous)
- Selkirk series (Beitian)**
- Shuswap Terrane (Pre-Beitian)**

Geological Survey, Canada. 1448

**Albert Canyon**



To accompany Memoir by R. A. Daly

**NOT TO BE TAKEN FROM LIBRARY  
NE PAS SORTIR DE LA BIBLIOTHÈQUE**

S. I. 2. Albert Canyon, B.C. Map 1448  
A, Geol. Scale - 1.4 mi. to 1" 1915

★  
1448